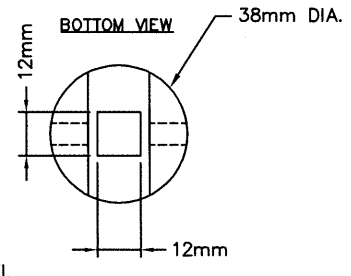


NOTE:
 FOR NEW INSTALLATIONS THE SPINDLE SHALL BE 2134mm(7ft)
 FOR REHABILITATION WORK THE SPINDLE SHALL BE 2134mm(7ft), 2438mm(8ft) or 2743mm(9ft)



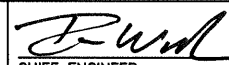
REVISIONS	
1	ADDED 2438/2743mm SPINDLE LENGTHS HLO 2011-02-22
2	ADDED OPTION TO WELD CLEVIS TO ROD HLO 2017-JAN-25
3	
4	


DRAWN BY J.M.H.
 DATE MARCH 12, 2003

SCALES :
 HOR. 1:2 VERT. 1:2

 **City of Saskatoon**
 Transportation & Utilities Department

15mm SPINDLE DETAILS


 CHIEF ENGINEER
 DATE JAN 30 2017


 ENGINEER
 DATE JAN 30 2017

PLAN NO. 102-0013-013r003