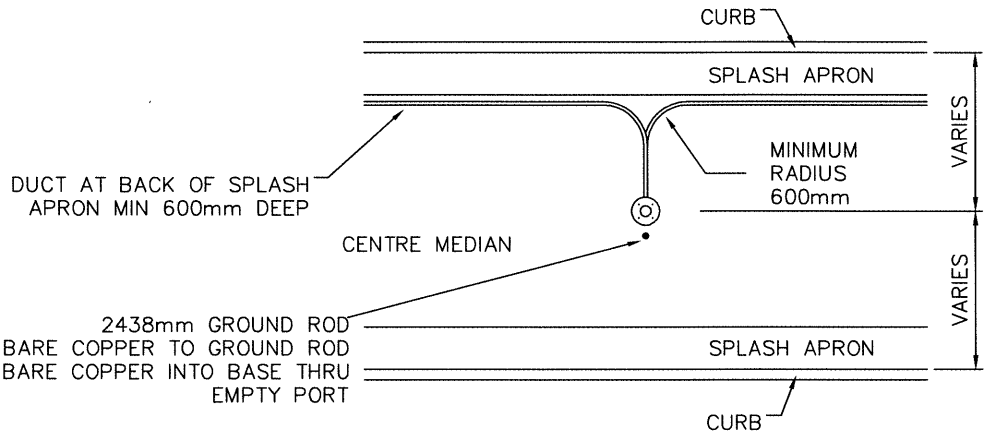
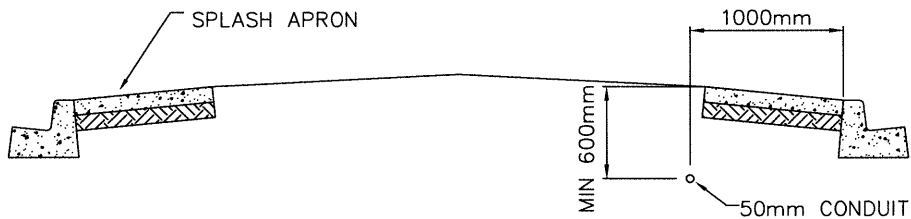


ELEVATION AT POLE  
NTS

REFER TO DWG  
102-0016-029



PLAN VIEW  
NTS



ELEVATION AT MIDSPAN  
NTS

DUCT AT BACK OF SPLASH  
APRON MIN 600mm DEEP

2438mm GROUND ROD  
CLAMP #6 BARE COPPER TO GROUND ROD  
BRING #6 BARE COPPER INTO BASE THRU  
EMPTY PORT

CURB

SPLASH APRON

MINIMUM  
RADIUS  
600mm

CENTRE MEDIAN

SPLASH APRON

CURB

VARIES

VARIES



**City of  
Saskatoon**  
Transportation & Utilities Department

BASE/DUCTING INSTALLATION  
TYPICAL MEDIAN CROSS SECTION

APPROVED

ENGINEER

ENGINEER

PLAN NO.

102-0007-008r001

PLAN DESCRIPTION/REVISIONS

4	
3	
2	
1	

DRAWN BY DJC  
DATE 2014-DEC-17

SCALE : HOR. N.T.S. VERT. N.T.S.