



Saskatoon Interchange Project

What is the Saskatoon Interchange Project?

The interchanges at McOrmond Drive and College Drive and Boychuk Drive and Highway 16 are bundled as a single project. It is called the Saskatoon Interchange Project.

Why are the interchanges necessary?

There's been rapid growth in traffic volume at both intersections over the past few years. Continuing development in the area is adding to continued growth in traffic. Delays, collisions and fuel consumption are also on an upward trend. The most effective way of reducing these trends is to build interchanges.

When will interchange construction start and end?

Construction at each interchange site is underway and impacts to traffic are expected to start in June. The McOrmond Drive and College Drive interchange will be completed in the fall of 2018. The Boychuk Drive and Highway 16 interchange is scheduled for completion in 2019.

Who is building the interchanges, what are the costs, and who is paying for them?

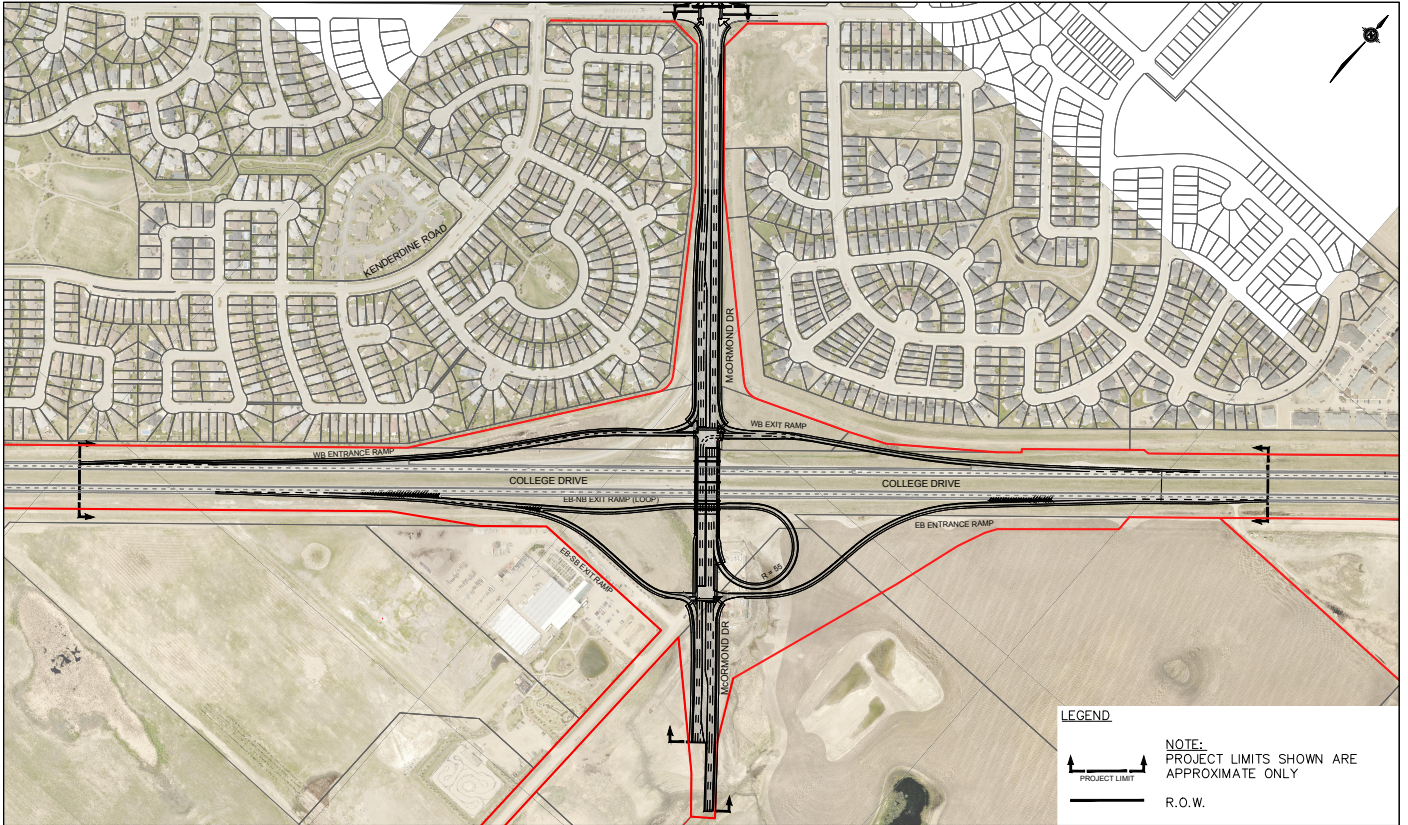
PCL Construction Management Inc. was chosen to design and build both interchanges for a price of \$56,694,600.00 (not including GST).

Surrounding developers are funding 100% of the total cost of the McOrmond Drive and College Drive interchange.

The governments of Canada and Saskatchewan are each contributing up to \$14,730,392 to the Boychuk Drive and Highway 16 interchange through the Provincial-Territorial Infrastructure Component – National and Regional Projects.

How will construction affect my commute and how can I stay informed?

The City will introduce transportation plans for each location, which will include recommendations on alternate routes. Impacts to traffic flows will be communicated through saskatoon.ca/interchanges and through the City's various communication tools (interactive map, Service Alerts, social media feeds).



NO.	DATE	BY
1		
2		
3		
4		
5		
6		
7		
8		
9		
10		
11		
12		
13		
14		
15		
16		
17		
18		
19		
20		
21		
22		
23		
24		
25		
26		
27		
28		
29		
30		
31		
32		
33		
34		
35		
36		
37		
38		
39		
40		
41		
42		
43		
44		
45		
46		
47		
48		
49		
50		
51		
52		
53		
54		
55		
56		
57		
58		
59		
60		
61		
62		
63		
64		
65		
66		
67		
68		
69		
70		
71		
72		
73		
74		
75		
76		
77		
78		
79		
80		
81		
82		
83		
84		
85		
86		
87		
88		
89		
90		
91		
92		
93		
94		
95		
96		
97		
98		
99		
100		

REFERENCE
CONCEPT



McORMOND INTERCHANGE
ROADWAYS

LEGEND
 PROJECT LIMIT
 R.O.W.
 NOTE: PROJECT LIMITS SHOWN ARE APPROXIMATE ONLY

SHEET NUMBER	
NO.	TITLE
3 OF 11	M-R-001

