



**City of Saskatoon
Civic Square East
202 4th Ave North, Saskatoon, Sk.**



**Asbestos Survey Report
November 2016**

**Prepared For: City of Saskatoon – Infrastructure Services Facilities Branch
Civic Square East
202 4th Avenue North
Saskatoon, SK. S7K 0K1
Attn: Hazel Fernandez**

**Prepared By: Bersch & Associates Ltd.
Project No.: B40SRH29F**

1.0 EXECUTIVE SUMMARY

The survey of Civic Square East located at 202 4th Avenue North, in Saskatoon, Saskatchewan entailed the inspection of all accessible suspect Asbestos Containing Material (ACM) located throughout the facility. Materials inspected included mechanical insulating material, fire-stop material, parging, plaster, drywall mud compound, ceiling tiles, vinyl floor coverings, molding, peg board, gasket material, acoustical panels, insulation, debris, etc.

Bulk sample analysis results indicate the presence of “Chrysotile Asbestos” within Civic Square East. Refer to **Appendix I** for bulk sample analysis results. The recommended action to be implemented in reference to the ACM identified is “Management”. Refer to **Section 5.0 Asbestos Abatement Discussion** for further details. It should be noted that the recommendation of “Management” as part of the asbestos action plan is based on the premise that renovations are not scheduled throughout the facility that would impact the asbestos-containing material present. Asbestos was detected in the following forms and locations throughout the facility:

- **Vinyl Asbestos Floor Tile (VAT)** was observed in various areas throughout the basement level of the building. Please refer to **Appendix II & Appendix III** of this report. The VAT is identified on the Floor Plans located in **Appendix III** of this report.
- **Pipe Fitting Compound** was observed in various areas and rooms throughout the building. Please refer to **Appendix I & II** of this report.
- **Plaster** was observed in room B103 on the pipe chase along the East Wall and in the Freight Elevator Penthouse in the Stairwell. Please refer to **Appendix I & II** of this report.
- **Duct Insulation** was observed in rooms B115, B116, Roof West Penthouse and the Mechanical Room Pipe Chase area in the main floor loading dock area. Please refer to **Appendix I & II** of this report.
- **Block Wall Insulation (Vermiculite)** was not observed during the survey. Prior to any major renovations or demolitions, a destructive test is recommended to verify the presence/absence of vermiculite within the block walls.

Bersch & Associates Ltd. implements the use of door jamb labels that are applied to all doorjambes of rooms containing asbestos. This permits anyone accessing the room to easily identify the ACM present without having to reference the written report. Legends providing an explanation of the abbreviations used on door jambs were placed on the backside of all maintenance/custodial doors within the facility. Employees and contractors must be informed of the presence of asbestos and the use of the legend as a reference to identify ACM within the areas they are working. The various types of accessible ACM within the facility have been clearly identified to eliminate the uncertainty of asbestos content.

NOTE: All areas, which are inaccessible at this time, shall be considered to contain asbestos material until bulk sampling determines otherwise. Prior to any renovation/demolition activity, a destructive investigation is recommended to identify any inaccessible ACM that is physically concealed or isolated. Destructive sampling of all types of suspect materials was not performed during this Survey. Materials such as the following, may require more extensive destructive testing to determine the presence/absence of Asbestos:

- **Block Wall Insulation (Vermiculite)** – Potential locations for this type of insulation are within Attics, Walls and Block Wall Cavities.
- **Drywall Mud Compound** - At joints and nail/screw holes on drywall.
- **Pipefitting Mud Compound** – Potential locations are on elbows, T's, hangers, and valves on mechanical piping in concealed areas.
- **Floor Covering** – Various layers may be present beneath the existing floor covering.

During the survey of Civic Square East, the Asbestos Containing Materials were assessed and given a Priority Rating of One, Two or Three, with Priority One being the items requiring the most immediate attention. Refer to **Appendix II, Asbestos Survey Database** for a detailed room-by-room account of all areas inspected during survey activity. Refer to **Appendix IV, Asbestos Building Materials Legend** for a detailed description of each of the abbreviations shown on the door jamb labels.

2.0 INTRODUCTION

Bersch & Associates Ltd. was retained by the City of Saskatoon to conduct an Asbestos Survey and Hazard Assessment of the Civic Square East Building located at 202 4th Avenue North in Saskatoon, Saskatchewan. The survey entailed the inspection of all accessible areas of the facility; including ceiling spaces, crawl spaces, pipe chases, and attics, etc. The purpose of the survey was to locate, identify and assess the condition of all Asbestos Containing Materials (ACM) located throughout the facility.

This report gives a detailed account of the inspection results and our firm's recommendations on control options to be implemented to bring the facility into compliance with the Province of Saskatchewan Occupational Health and Safety Act and Regulations. A review of this report shall be conducted with all trades that are entering the facility to perform maintenance or renovation activity. This will ensure they are familiar with the types and locations of asbestos-containing materials present and prevent any uncontrolled disturbance and/or possible exposure to asbestos.

3.0 METHODOLOGY

Bersch & Associates Ltd. conducted the survey of Civic Square East in August and September of 2016. The primary documents for guidance and criteria in this survey were the Province of Saskatchewan “Occupational Health and Safety Act and Regulations, 1996”, Province of Saskatchewan “Managing Asbestos”, and the U.S. Environmental Protection Agency “Guidance for Controlling Asbestos-Containing Materials in Buildings”. The USEPA document identifies factors associated with the “condition” and the “potential for disturbance or erosion” of asbestos-containing materials (ACM). These factors help to determine the potential for exposure to ACM and were used to make a qualitative evaluation of the material.

It should be noted that the recommendation of “Management” Asbestos Abatement Action is based on the premise that renovations are not scheduled in that area that will require disturbing or violating the asbestos containing material. In the event that renovations are scheduled that impact upon the areas of asbestos containing material then pre-removal of the asbestos containing materials may be necessary.

In total, one hundred thirty-four (134) bulk samples of suspect asbestos-containing materials were collected throughout the building. “Chrysotile Asbestos” was identified in twenty-seven (27) of the samples collected. Refer to **Appendix I** for a copy of the **Bulk Sample Analysis Report**. All bulk samples collected were analyzed by Bersch & Associates Ltd. laboratory in accordance with the current USEPA 600/R-93/116 Method for the analysis of asbestos in building materials using polarized light microscopy and dispersion staining techniques.

4.0 RECOMMENDATIONS:

Throughout the survey of the Civic Square East building, the Asbestos Containing Materials were assessed and given a Priority Rating of One, Two or Three, with Priority One being the items requiring the most immediate attention. As a result, seven (7) Priority One items were identified. Future planning should begin to address these areas as per the recommendations provided in the attached **Asbestos Survey Database** found in **Appendix II**. Priority Ratings for all other ACM identified is also found in the database on a room-by-room account.

5.0 ASBESTOS ABATEMENT DISCUSSION

Asbestos is a known carcinogen and is listed in the Province of Saskatchewan under the Occupational Health and Safety Regulations Appendix, Table 20 as a Designated Hazardous Chemical Substance and any release of asbestos fibres into the atmosphere creates a potential health hazard. Although the mechanism and epidemiology of asbestos carcinogenesis are not yet well defined, accumulating evidence suggests the significance of exposure at even very low fibre concentrations and hence human exposure should be kept to a minimum. It should be noted however, that asbestos is a natural mineral and a measurable background concentration can be detected in any location sampled (inside buildings, outside buildings, urban, rural, etc.). The recommendations of the report are therefore intended to keep the potential exposure to an absolute minimum with the knowledge that a zero exposure is not possible.

Asbestos containing materials have been used in a wide variety of applications. Of concern is the group of so-called friable products. A friable product is one that can be crumbled or reduced to powder or smaller fragments by hand pressure. Publications from the U.S.E.P.A. as early as 1977 have indicated the potential hazard of asbestos exposure in buildings containing these friable products. The two main uses of friable asbestos products are as spray insulation (thermal, acoustic or fireproofing) on deck and/or beams or as thermal insulation on piping or mechanical equipment. A large amount of non-friable asbestos-containing materials have also been used in building construction such as asbestos cement board and asbestos containing vinyl flooring.

The mere presence of a friable asbestos-containing material does not imply that there is an actual presence of elevated airborne fibre. As numerous studies have indicated, elevated asbestos fibre levels are generally found when settled dust or the actual asbestos containing material itself is disturbed by maintenance, renovation, inadvertent contact or vibration. The factors considered in the Environmental Protection Agency (USEPA) exposure assessment (condition of material, water damage, activity, movement, exposed surface area, accessibility, friability and presence in an air stream) often give some indication of the likelihood of fibre release but are not in any way definitive in determining whether a hazard exists or not. That is, even if the most friable product exists in a building, elevated fibre levels will not likely occur unless there is some disturbance by physical contact, vibration or an air stream.

There are four possible approaches to control exposure to airborne asbestos once a friable material is identified in a building. These methods briefly are as follows:

- A) **Removal** - Asbestos material is removed and disposed of by burial and replaced by non-asbestos materials.
- B) **Encapsulation** - Asbestos material is coated with a bridging or penetrating sealant.
- C) **Enclosure** - Asbestos containing materials are separated from the building environment by barriers such as suspended ceilings or cladding materials.

D) Deferred Action or Management and Custodial Control - The Province of Saskatchewan Human Resources, Labor and Employment Branch under the Occupational Health and Safety Regulations publish a document outlining “The Management of Asbestos”. In the guide for compliance, an action plan is outlined for management of the asbestos materials identified and in summary is:

1. Identification, which has been accomplished by this report.
2. Development of Written Handling Procedures for maintenance personnel or often arrangements are made for a qualified contractor to conduct the necessary removal or spot maintenance prior to the regular staff conducting maintenance.
3. Asbestos Abatement Awareness and Process Training if the regular maintenance personnel are required to conduct asbestos-related activities.
4. Inspection on regular basis is conducted to determine the ongoing condition of the material. Sask. Occupational Health & Safety Regulations require an “annual” inspection of all “friable” asbestos materials by a competent person.

In the event renovations or maintenance is performed within areas containing asbestos materials, written procedures must be developed to conduct the activity or prior removal if the situation warrants.

6.0 REFERENCES

- .1 Province of Saskatchewan "The Occupational Health and Safety Act and The Occupational Health and Safety Regulations" Office Consolidation, May 1996.
- .2 Province of Saskatchewan Human Resources, Labor, and Employment "The Management of Asbestos" January 1991.
- .3 USEPA, 1985. U.S. Environmental Protection Agency, "Guidance for Controlling Asbestos-Containing Materials in Buildings". Washington, DC: Office of Toxic Substances, USEPA.
- .4 Midwest Centre for Occupational Health & Safety St. Paul's, Minnesota – Asbestos Training For Inspectors & Management Planners
- .5 McCrone Research Institute Course Hayward California "Asbestos Identification"
- .6 Environment Management and Protection Act, Saskatchewan Environment, October 2002
- .7 Hazardous Substances and waste Dangerous Goods Regulations, Saskatchewan Environment, April 1989

APPENDIX I

BULK SAMPLE ANALYSIS REPORT

BERSCH & ASSOCIATES LTD.

November 30th, 2016

City of Saskatoon – Infrastructure Services – Facilities Branch
Civic Square East
202 4th Avenue North
Saskatoon, SK.
S7K 0K1

ATTENTION: Hazel Fernandez

SUBJECT: Bulk Sample Analysis Report

Please find attached the laboratory results for the bulk analysis of the samples collected throughout the Civic Square East Building located at 202 4th Avenue North in Saskatoon, SK. The samples were analyzed in our laboratory for the identification of asbestos. Asbestos **was** detected in the samples collected.

The results for the bulk samples were obtained by examination in accordance with the current USEPA 600/R-93/116 Method for the analysis of asbestos in building materials using polarized light microscopy and dispersion staining techniques. The detection limit of this method is listed as less than 1% by volume.

This test report relates only to the materials sent for examination and any use or extension of the information by the client of these results is the responsibility of the client. If any questions arise on the results of the attached information, please contact me at 306.222.7477. Thank you for this opportunity of service!

Sincerely,



Brad Berschiminsky
Bersch & Associates Ltd.
File: B67BLH29F

Bersch & Associates Ltd.

B67BAH29F

Box 3568
Humboldt, Sask. S0K 2A0**BULK SAMPLE ANALYSIS REPORT****PROJECT NO: B67.16****CLIENT: CITY OF SASKATOON - INFRASTRUCTURE SERVICES FACILITIES BRANCH****CONTACT: HAZEL FERNANDEZ****LOCATION: CIVIC SQUARE EAST**

NO.	DATE	SAMPLE INFORMATION	ASBESTOS	%	ANALYST
1	29-Aug-16	B103 - Pipe Fitting Compound On Medium Line Adjacent Book Shelf on North Wall - Line 1	Chrysotile	75%	WB
2	29-Aug-16	B103 - Medium Pipe Fitting Compound On Medium Line Adjacent Book Shelf on North Wall - Line 2	Chrysotile	60%	WB
3	29-Aug-16	B103 -Pipe Fitting Compound On Large Line Below Overhead Lights	Chrysotile	70%	WB
4	29-Aug-16	B103 - Lineal Pipe Insulation	No Asbestos Detected		WB
5	29-Aug-16	B103 -Gray Fire Stop Parging At East Wall Penetration Above Book Shelf	No Asbestos Detected		WB
6	29-Aug-16	B103 - White Mud Compound At East Wall Pipe Penetration Above Book Shelf	No Asbestos Detected		WB
7	29-Aug-16	B103 - Wall Plaster On Pipe Chase On East Wall - Base Coat	Chrysotile	2%	WB

Bersch & Associates Ltd.

B67BAH29F

Box 3568
Humboldt, Sask. S0K 2A0**BULK SAMPLE ANALYSIS REPORT****PROJECT NO: B67.16****CLIENT: CITY OF SASKATOON - INFRASTRUCTURE SERVICES FACILITIES BRANCH****CONTACT: HAZEL FERNANDEZ****LOCATION: CIVIC SQUARE EAST**

NO.	DATE	SAMPLE INFORMATION	ASBESTOS	%	ANALYST
8	29-Aug-16	B104 - Drywall Mud Compound On South Wall	No Asbestos Detected		WB
9a	29-Aug-16	B104 - Plaster Skim Coat On East Wall	No Asbestos Detected		WB
9b	29-Aug-16	B104 - Plaster Base Coat On East Wall	No Asbestos Detected		WB
10	29-Aug-16	B100 -2' x 4' Ceiling Tile, Two Pinhole Pattern	No Asbestos Detected		WB
11	29-Aug-16	B106 - 1' x 1' Floor Tile, Beige With White/Brown Streak	Chrysotile	1-5%	WB
12	29-Aug-16	B101A - Black Moulding Along Bottom of Walls Throughout Corridor	No Asbestos Detected		WB
13	29-Aug-16	B106 - Pipe Fitting Compound on Medium Lines Above Ceiling Tile	Chrysotile	70%	WB

Bersch & Associates Ltd.

B67BAH29F

Box 3568
Humboldt, Sask. S0K 2A0**BULK SAMPLE ANALYSIS REPORT****PROJECT NO: B67.16****CLIENT: CITY OF SASKATOON - INFRASTRUCTURE SERVICES FACILITIES BRANCH****CONTACT: HAZEL FERNANDEZ****LOCATION: CIVIC SQUARE EAST**

NO.	DATE	SAMPLE INFORMATION	ASBESTOS	%	ANALYST
14	29-Aug-16	B106 - 2' x 4' Ceiling Tile Pinhole/Fissured Pattern	No Asbestos Detected		WB
15	29-Aug-16	B106A - Stone Pattern Sheet Flooring	No Asbestos Detected		WB
16	29-Aug-16	B119 -Pipe Fitting Compound, Small Overhead Lines Adjacent to Heater	Chrysotile	60%	WB
17	29-Aug-16	B119 -Fire Stop Putty At Conduit Wall Penetration	No Asbestos Detected		WB
18	29-Aug-16	B119 - Lineal Pipe Insulation	No Asbestos Detected		WB
19a	29-Aug-16	S2 -Plaster Skim Coat Adjacent Stairs Overhead	No Asbestos Detected		WB
19b	29-Aug-16	S2 -Plaster Base Coat Adjacent Stairs Overhead	No Asbestos Detected		WB

Bersch & Associates Ltd.

B67BAH29F

Box 3568
Humboldt, Sask. S0K 2A0**BULK SAMPLE ANALYSIS REPORT****PROJECT NO: B67.16****CLIENT: CITY OF SASKATOON - INFRASTRUCTURE SERVICES FACILITIES BRANCH****CONTACT: HAZEL FERNANDEZ****LOCATION: CIVIC SQUARE EAST**

NO.	DATE	SAMPLE INFORMATION	ASBESTOS	%	ANALYST
20	29-Aug-16	B120 - 1' x 1' Floor Tile Off-White With Beige Fleck	No Asbestos Detected		WB
21	29-Aug-16	B121/120 - Pipe Fitting Compound Compilation On Overhead Lines Above Suspended Ceiling	Chrysotile	65%	WB
22	29-Aug-16	B121 - Pipe Fitting Compound on Blue Pipe Sensor on Adjacent Outlet	Chrysotile	70%	WB
23	29-Aug-16	B101D - Pipe Fitting Compound Within Ceiling Space Adjacent Room B121	Chrysotile	40%	WB
24	29-Aug-16	B125 - Lineal Pipe Insulation	No Asbestos Detected		WB
25	29-Aug-16	B115 -Pipe Fitting Compound On Small Lines Adjacent "Pit"	Chrysotile	75%	WB
26	29-Aug-16	B115 -Duct Insulation Above AHU #1	Chrysotile	60%	WB

Bersch & Associates Ltd.

B67BAH29F

Box 3568
Humboldt, Sask. S0K 2A0**BULK SAMPLE ANALYSIS REPORT****PROJECT NO: B67.16****CLIENT: CITY OF SASKATOON - INFRASTRUCTURE SERVICES FACILITIES BRANCH****CONTACT: HAZEL FERNANDEZ****LOCATION: CIVIC SQUARE EAST**

NO.	DATE	SAMPLE INFORMATION	ASBESTOS	%	ANALYST
27	29-Aug-16	B111 - Peg Board On North Wall	No Asbestos Detected		WB
28	29-Aug-16	B111 - Drywall Mud Compound On Ceiling Adjacent Fire Damper Box	No Asbestos Detected		WB
29a	29-Aug-16	B101B -Wall Plaster Skim Coat Adjacent Boiler Room.	No Asbestos Detected		WB
29b	29-Aug-16	B101B -Wall Plaster Base Coat Adjacent Boiler Room.	No Asbestos Detected		WB
30	29-Aug-16	B113 - Small Pipe Fitting Compound On Gray Lines Overhead Entry Door	Chrysotile	70%	WB
31	29-Aug-16	B113 -Pipe Fitting Compound on Overhead Orange Lines Above Boiler	No Asbestos Detected		WB
32	29-Aug-16	B113 - Rope Gasket On Boiler Doors	No Asbestos Detected		WB

Bersch & Associates Ltd.

B67BAH29F

Box 3568
Humboldt, Sask. S0K 2A0**BULK SAMPLE ANALYSIS REPORT****PROJECT NO: B67.16****CLIENT: CITY OF SASKATOON - INFRASTRUCTURE SERVICES FACILITIES BRANCH****CONTACT: HAZEL FERNANDEZ****LOCATION: CIVIC SQUARE EAST**

NO.	DATE	SAMPLE INFORMATION	ASBESTOS	%	ANALYST
33	29-Aug-16	B113 - Lineal Pipe Insulation	No Asbestos Detected		WB
34	29-Aug-16	B109 - Drywall Mud Compound Above Sink	No Asbestos Detected		WB
35	1-Sep-16	B108 - 2' x 4' Ceiling Tile Pine Hole Pattern	No Asbestos Detected		WB
36a	1-Sep-16	B108 (Office) -Wall Plaster Skim Coat Above Ceiling Tile	No Asbestos Detected		WB
36b	1-Sep-16	B108 (Office) -Wall Plaster Base Coat Above Ceiling Tile	No Asbestos Detected		WB
37	1-Sep-16	B108 -Drywall Mud Compound Compilation	No Asbestos Detected		WB
38	1-Sep-16	B108 - Lineal Pipe Insulation	No Asbestos Detected		WB

Bersch & Associates Ltd.

B67BAH29F

Box 3568
Humboldt, Sask. S0K 2A0**BULK SAMPLE ANALYSIS REPORT****PROJECT NO: B67.16****CLIENT: CITY OF SASKATOON - INFRASTRUCTURE SERVICES FACILITIES BRANCH****CONTACT: HAZEL FERNANDEZ****LOCATION: CIVIC SQUARE EAST**

NO.	DATE	SAMPLE INFORMATION	ASBESTOS	%	ANALYST
39	1-Sep-16	B108 Kitchen Area - Blue Swirl Sheet Flooring	No Asbestos Detected		WB
40	1-Sep-16	B108 Bar Area - 1' x 14" Floor Tile	No Asbestos Detected		WB
41	1-Sep-16	B108 - Acoustical Board Throughout Area	No Asbestos Detected		WB
42	1-Sep-16	B108 Kitchen - Flex Tube Ducting	No Asbestos Detected		WB
43	1-Sep-16	B107 - 2' x 4' Ceiling Tile Pin Hole/Deep Fissured Pattern	No Asbestos Detected		WB
44	1-Sep-16	B107 - Small Pipe Fitting Compound Above Suspended Ceiling	Chrysotile	30%	WB
45	1-Sep-16	B107 - 1' x 1' Floor Tile Underneath Carpet	No Asbestos Detected		WB

Bersch & Associates Ltd.

B67BAH29F

Box 3568
Humboldt, Sask. S0K 2A0**BULK SAMPLE ANALYSIS REPORT****PROJECT NO: B67.16****CLIENT: CITY OF SASKATOON - INFRASTRUCTURE SERVICES FACILITIES BRANCH****CONTACT: HAZEL FERNANDEZ****LOCATION: CIVIC SQUARE EAST**

NO.	DATE	SAMPLE INFORMATION	ASBESTOS	%	ANALYST
46	1-Sep-16	Main Floor Loading Dock - Lineal Pipe Insulation On HWHR/HWHS Lines	No Asbestos Detected		WB
47	1-Sep-16	Main Floor Loading Dock - Drywall Mud Compound Compilation	No Asbestos Detected		WB
48a	1-Sep-16	Main Floor Loading Dock - Plaster Skim Coat	No Asbestos Detected		WB
48b	1-Sep-16	Main Floor Loading Dock - Plaster Base Coat	No Asbestos Detected		WB
48c	1-Sep-16	Main Floor Loading Dock - Plaster Base Coat #2	No Asbestos Detected		WB
49	3-Sep-16	100 - Plaster Skim Coat Adjacent Double Door Entry	No Asbestos Detected		WB
50	3-Sep-16	100 - 14" x 14" Floor Tile	No Asbestos Detected		WB

Bersch & Associates Ltd.

B67BAH29F

Box 3568
Humboldt, Sask. S0K 2A0**BULK SAMPLE ANALYSIS REPORT****PROJECT NO: B67.16****CLIENT: CITY OF SASKATOON - INFRASTRUCTURE SERVICES FACILITIES BRANCH****CONTACT: HAZEL FERNANDEZ****LOCATION: CIVIC SQUARE EAST**

NO.	DATE	SAMPLE INFORMATION	ASBESTOS	%	ANALYST
51	3-Sep-16	100 - Drywall Mud Compound Compilation	No Asbestos Detected		WB
52	3-Sep-16	100 - 2' x 2' Ceiling Tile Pin Hole/Large Pin Hole Pattern	No Asbestos Detected		WB
53a	3-Sep-16	100 - Plaster Skim Coat On Column Above Ceiling Tile	No Asbestos Detected		WB
53b	3-Sep-16	100 - Plaster Base Coat On Column Above Ceiling Tile	No Asbestos Detected		WB
54	3-Sep-16	100 - Pipe Fitting Compound Above Ceiling Tile Within Column Pipe Chase	Chrysotile	60%	WB
55	3-Sep-16	100 - Lineal Pipe Insulation Above Suspended Ceiling	No Asbestos Detected		WB
56a	3-Sep-16	100 Meeting Room - Plaster Skim Coat On East Wall Above Suspended Ceiling	No Asbestos Detected		WB

Bersch & Associates Ltd.

B67BAH29F

Box 3568
Humboldt, Sask. S0K 2A0**BULK SAMPLE ANALYSIS REPORT****PROJECT NO: B67.16****CLIENT: CITY OF SASKATOON - INFRASTRUCTURE SERVICES FACILITIES BRANCH****CONTACT: HAZEL FERNANDEZ****LOCATION: CIVIC SQUARE EAST**

NO.	DATE	SAMPLE INFORMATION	ASBESTOS	%	ANALYST
56b	3-Sep-16	100 Meeting Room - Plaster Base Coat On East Wall Above Suspended Ceiling	No Asbestos Detected		WB
57	3-Sep-16	101a - White Insulation Above Suspended Ceiling	No Asbestos Detected		WB
58	3-Sep-16	101 - Gray Flex Ducting Above Suspended Ceiling	No Asbestos Detected		WB
59a	3-Sep-16	101 - Plaster Skim Coat Compilation Sample From Columns	No Asbestos Detected		WB
59b	3-Sep-16	101 - Plaster Base Coat Compilation Sample From Columns	No Asbestos Detected		WB
60	3-Sep-16	101 - Drywall Mud Compound Compilation Sample	No Asbestos Detected		WB
61a	3-Sep-16	102 - Plaster Skim Coat On Columns Compilation	No Asbestos Detected		WB

Bersch & Associates Ltd.

B67BAH29F

Box 3568
Humboldt, Sask. S0K 2A0**BULK SAMPLE ANALYSIS REPORT****PROJECT NO: B67.16****CLIENT: CITY OF SASKATOON - INFRASTRUCTURE SERVICES FACILITIES BRANCH****CONTACT: HAZEL FERNANDEZ****LOCATION: CIVIC SQUARE EAST**

NO.	DATE	SAMPLE INFORMATION	ASBESTOS	%	ANALYST
61b	3-Sep-16	102 - Plaster Base Coat On Columns Compilation	No Asbestos Detected		WB
62	3-Sep-16	102e - Silver Duct Wrap Insulation	No Asbestos Detected		WB
63	3-Sep-16	102 - Lineal Pipe Insulation Above Suspended Ceiling	No Asbestos Detected		WB
64	3-Sep-16	102 - Drywall Mud Compound Compilation	No Asbestos Detected		WB
65a	3-Sep-16	102s/102u - Plaster Skim Coat Compilation	No Asbestos Detected		WB
65b	3-Sep-16	102s/102u - Plaster Base Coat Compilation	No Asbestos Detected		WB
66a	3-Sep-16	Main Floor South East Corridor - Ceiling Plaster Skim Coat	No Asbestos Detected		WB

Bersch & Associates Ltd.

B67BAH29F

Box 3568
Humboldt, Sask. S0K 2A0**BULK SAMPLE ANALYSIS REPORT****PROJECT NO: B67.16****CLIENT: CITY OF SASKATOON - INFRASTRUCTURE SERVICES FACILITIES BRANCH****CONTACT: HAZEL FERNANDEZ****LOCATION: CIVIC SQUARE EAST**

NO.	DATE	SAMPLE INFORMATION	ASBESTOS	%	ANALYST
66b	3-Sep-16	Main Floor South East Corridor - Ceiling Plaster Base Coat	No Asbestos Detected		WB
67a	3-Sep-16	Main Floor South East Corridor - Wall Plaster Skim Coat	No Asbestos Detected		WB
67b	3-Sep-16	Main Floor South East Corridor - Wall Plaster Base Coat	No Asbestos Detected		WB
68a	3-Sep-16	104 - Wall Plaster Skim Coat	No Asbestos Detected		WB
68b	3-Sep-16	104 - Wall Plaster Base Coat	No Asbestos Detected		WB
69	3-Sep-16	104/Corridor - Drywall Mud Compound Compilation	No Asbestos Detected		WB
70	3-Sep-16	Main Floor Boardroom - Lineal Pipe Insulation Above Suspended Ceiling	No Asbestos Detected		WB

Bersch & Associates Ltd.

B67BAH29F

Box 3568
Humboldt, Sask. S0K 2A0**BULK SAMPLE ANALYSIS REPORT****PROJECT NO: B67.16****CLIENT: CITY OF SASKATOON - INFRASTRUCTURE SERVICES FACILITIES BRANCH****CONTACT: HAZEL FERNANDEZ****LOCATION: CIVIC SQUARE EAST**

NO.	DATE	SAMPLE INFORMATION	ASBESTOS	%	ANALYST
71	7-Sep-16	328 - 2' x 4' Ceiling Tile Pin Hole/Large Pin Hole Pattern	No Asbestos Detected		WB
72	7-Sep-16	326 - 16" x 16" Floor Tile Off White With Fine Brown Lines	No Asbestos Detected		WB
73	7-Sep-16	324/316/303/325 Area - Pipe Fitting Compound Compilation From Overhead Lines	Chrysotile	75%	WB
74	7-Sep-16	325 Area - 1' x 1' Floor Tile White With Gray & Black Irregular Shapes	No Asbestos Detected		WB
75	7-Sep-16	312 Corridor - 16" x 16" Blue Floor Tile	No Asbestos Detected		WB
76a	7-Sep-16	345b - Plaster Skim Coat Compilation	No Asbestos Detected		WB
76b	7-Sep-16	345b - Plaster Base Coat Compilation	No Asbestos Detected		WB

Bersch & Associates Ltd.

B67BAH29F

Box 3568
Humboldt, Sask. S0K 2A0**BULK SAMPLE ANALYSIS REPORT****PROJECT NO: B67.16****CLIENT: CITY OF SASKATOON - INFRASTRUCTURE SERVICES FACILITIES BRANCH****CONTACT: HAZEL FERNANDEZ****LOCATION: CIVIC SQUARE EAST**

NO.	DATE	SAMPLE INFORMATION	ASBESTOS	%	ANALYST
77	7-Sep-16	3rd Floor Area - Brown Paneling Along Upper Walls Throughout Floor	No Asbestos Detected		WB
78	7-Sep-16	319 - Debris Above Ceiling Tile	Chrysotile	40%	WB
79a	7-Sep-16	341 - Plaster Skim Coat	No Asbestos Detected		WB
79b	7-Sep-16	341 - Plaster Base Coat	No Asbestos Detected		WB
80	7-Sep-16	341 - Pipe Fitting Compound Within Access Panel Pipe Chase	Chrysotile	40%	WB
81	7-Sep-16	302 Corridor Adj. 342 - Medium Pipe Fitting Compound On Black Lines Above Suspended Ceiling	No Asbestos Detected		WB
82	7-Sep-16	3rd Floor Spy Channel - Lineal Pipe Insulation	No Asbestos Detected		WB

Bersch & Associates Ltd.

B67BAH29F

Box 3568
Humboldt, Sask. S0K 2A0**BULK SAMPLE ANALYSIS REPORT****PROJECT NO: B67.16****CLIENT: CITY OF SASKATOON - INFRASTRUCTURE SERVICES FACILITIES BRANCH****CONTACT: HAZEL FERNANDEZ****LOCATION: CIVIC SQUARE EAST**

NO.	DATE	SAMPLE INFORMATION	ASBESTOS	%	ANALYST
83	7-Sep-16	3rd Floor Spy Channel - "Peep Hole" Cover	No Asbestos Detected		WB
84a	7-Sep-16	3rd Floor Spy Channel - Plaster Skim Coat Compilation	No Asbestos Detected		WB
84b	7-Sep-16	3rd Floor Spy Channel - Plaster Base Coat Compilation	No Asbestos Detected		WB
85	7-Sep-16	3rd Floor Spy Channel - Pipe Fitting Compound Compilation	Chrysotile	70%	WB
86	7-Sep-16	3rd Floor Spy Channel - 3' x 3' Black Floor Tile	No Asbestos Detected		WB
87	7-Sep-16	342 - Brown Sheet Flooring	No Asbestos Detected		WB
88	7-Sep-16	3rd Floor - Drywall Mud Compilation	No Asbestos Detected		WB

Bersch & Associates Ltd.

B67BAH29F

Box 3568
Humboldt, Sask. S0K 2A0**BULK SAMPLE ANALYSIS REPORT****PROJECT NO: B67.16****CLIENT: CITY OF SASKATOON - INFRASTRUCTURE SERVICES FACILITIES BRANCH****CONTACT: HAZEL FERNANDEZ****LOCATION: CIVIC SQUARE EAST**

NO.	DATE	SAMPLE INFORMATION	ASBESTOS	%	ANALYST
89a	12-Sep-16	433 - Plaster Skim Coat Compilation	No Asbestos Detected		WB
89b	12-Sep-16	433 - Plaster Base Coat Compilation	No Asbestos Detected		WB
90	12-Sep-16	4th Floor - Drywall Mud Compilation	No Asbestos Detected		WB
91	12-Sep-16	431 - 2' x 4' Ceiling Tile Textured Small Pinhole Pattern	No Asbestos Detected		WB
92	12-Sep-16	402a - 2' x 4' Ceiling Tile Debris Above Suspended Ceiling Adjacent 410	No Asbestos Detected		WB
93	12-Sep-16	411 - Insulation Above Suspended Ceiling	No Asbestos Detected		WB
94	12-Sep-16	419 Area - Small Black Lines Above Suspended Ceiling	No Asbestos Detected		WB

Bersch & Associates Ltd.

B67BAH29F

Box 3568
Humboldt, Sask. S0K 2A0**BULK SAMPLE ANALYSIS REPORT****PROJECT NO: B67.16****CLIENT: CITY OF SASKATOON - INFRASTRUCTURE SERVICES FACILITIES BRANCH****CONTACT: HAZEL FERNANDEZ****LOCATION: CIVIC SQUARE EAST**

NO.	DATE	SAMPLE INFORMATION	ASBESTOS	%	ANALYST
95a	12-Sep-16	429 - Ceiling Plaster Skim Coat	No Asbestos Detected		WB
95b	12-Sep-16	429 - Ceiling Plaster Base Coat	No Asbestos Detected		WB
96	12-Sep-16	Main Floor Vestibule - Pipe Fitting Compound Above Suspended Ceiling	Chrysotile	30%	WB
97	12-Sep-16	Roof East Penthouse - Pipe Fitting Compound Small Line	Chrysotile	25%	WB
98	12-Sep-16	Roof East Penthouse - Pipe Fitting Compound Medium Line	Chrysotile	40%	WB
99a	12-Sep-16	Main Floor Spy Channel - Plaster Skim Coat	No Asbestos Detected		WB
99b	12-Sep-16	Main Floor Spy Channel - Plaster Base Coat	No Asbestos Detected		WB

Bersch & Associates Ltd.

B67BAH29F

Box 3568
Humboldt, Sask. S0K 2A0**BULK SAMPLE ANALYSIS REPORT****PROJECT NO: B67.16****CLIENT: CITY OF SASKATOON - INFRASTRUCTURE SERVICES FACILITIES BRANCH****CONTACT: HAZEL FERNANDEZ****LOCATION: CIVIC SQUARE EAST**

NO.	DATE	SAMPLE INFORMATION	ASBESTOS	%	ANALYST
100	12-Sep-16	225 - Pipe Fitting Compound In Wall Access Hatch	Chrysotile	30%	WB
101	12-Sep-16	2nd Floor Spy Channel - Rope Gasket Material	No Asbestos Detected		WB
102	12-Sep-16	2nd Floor Spy Channel - Pipe Fitting Compound Compilation Sample	Chrysotile	40%	WB
103	12-Sep-16	Roof West Penthouse - Expansion Gasket Material	No Asbestos Detected		WB
104	12-Sep-16	Roof West Penthouse - Duct Insulation Compound	Chrysotile	15%	WB
105	25-Sep-16	231 - Lineal Pipe Insulation	No Asbestos Detected		WB
106	25-Sep-16	201 - Drywall Mud Compilation	No Asbestos Detected		WB

Bersch & Associates Ltd.

B67BAH29F

Box 3568
Humboldt, Sask. S0K 2A0**BULK SAMPLE ANALYSIS REPORT****PROJECT NO: B67.16****CLIENT: CITY OF SASKATOON - INFRASTRUCTURE SERVICES FACILITIES BRANCH****CONTACT: HAZEL FERNANDEZ****LOCATION: CIVIC SQUARE EAST**

NO.	DATE	SAMPLE INFORMATION	ASBESTOS	%	ANALYST
107	25-Sep-16	214 - 1' x 1' Ceiling Tile Small Pin Hole & Textured Pattern	No Asbestos Detected		WB
108	25-Sep-16	216 - 1' x 1' Floor Tile Light Gray w/ White & Dark Gray Fleck	No Asbestos Detected		WB
109	25-Sep-16	Freight Elevator Penthouse - Small Pipe Fitting Compound Adj. Motors	No Asbestos Detected		WB
110	25-Sep-16	Freight Elevator Penthouse - Large Pipe Fitting Compound Adj. Motors	Chrysotile	60%	WB
111	25-Sep-16	Freight Elevator Penthouse - Expansion Gasket Material	No Asbestos Detected		WB
112	25-Sep-16	Freight Elevator Penthouse - Wall Plaster - Stairwell	Chrysotile	3%	WB
113a	25-Sep-16	230 - Plaster Skim Coat Compilation	No Asbestos Detected		WB

Bersch & Associates Ltd.

B67BAH29F

Box 3568
Humboldt, Sask. S0K 2A0

BULK SAMPLE ANALYSIS REPORT

PROJECT NO: B67.16

CLIENT: CITY OF SASKATOON - INFRASTRUCTURE SERVICES FACILITIES BRANCH

CONTACT: HAZEL FERNANDEZ

LOCATION: CIVIC SQUARE EAST

NO.	DATE	SAMPLE INFORMATION	ASBESTOS	%	ANALYST
113b	25-Sep-16	230 - Plaster Base Coat Compilation	No Asbestos Detected		WB

APPENDIX II

ASBESTOS SURVEY DATABASE

Civic Square East - 2016															
			SAMPLE DATA												
Floor	Room Number	Use	SAMPLE REP	Sample ID	Date DD/MM/YY	Asbestos Type	% of Asbestos	Tradename ACM Product	Condition	Priority	Description of Sample Location	Asbestos Content In Area	Potential for Disturbance	Recommended Action	Comments
B	B100		Sample	B67-ASB.10	29-Aug-16	No Asbestos Detected					B100 -2' x 4' Ceiling Tile, Two Pinhole Pattern	No Accessible ACM			
B	B101a	Corridor	Sample	B67-ASB.12	29-Aug-16	No Asbestos Detected					B101A - Black Moulding Along Bottom of Walls Throughout Corridor	Vinyl Asbestos Tile, Pipeline Fitting Compound			
B	B101a	Corridor	Sample Rep.	B67-ASB.11	29-Aug-16	Chrysotile	1-5%	Vinyl Asbestos Tile	Good	3	B106 - 1' x 1' Floor Tile, Beige With White/Brown Streak	Vinyl Asbestos Tile, Pipeline Fitting Compound	Low	Manage	
B	B101b	Corridor	Sample Rep.	B67-ASB.11	29-Aug-16	Chrysotile	1-5%	Vinyl Asbestos Tile	Poor/Mod	2	B106 - 1' x 1' Floor Tile, Beige With White/Brown Streak	Vinyl Asbestos Tile, Pipeline Fitting Compound	Low	Repair/Remove	In Entry to B113, East entry to B108 (adj B113), Adj "B6" Door
B	B101b	Corridor	Sample	B67-ASB.29a	29-Aug-16	No Asbestos Detected					B101B -Wall Plaster With Skim Coat Adjacent Boiler Room.	Vinyl Asbestos Tile, Pipeline Fitting Compound			
B	B101b	Corridor	Sample	B67-ASB.29b	29-Aug-16	No Asbestos Detected					B101B -Wall Plaster With Skim Coat Adjacent Boiler Room.	Vinyl Asbestos Tile, Pipeline Fitting Compound			
B	B101c	Corridor	Sample Rep.	B67-ASB.11	29-Aug-16	Chrysotile	1-5%	Vinyl Asbestos Tile	Poor/Mod	2	B106 - 1' x 1' Floor Tile, Beige With White/Brown Streak	Vinyl Asbestos Tile, Pipeline Fitting Compound	Low	Repair/Remove	In front of the freight elevator
B	B101d	Corridor	Sample Rep.	B67-ASB.11	29-Aug-16	Chrysotile	1-5%	Vinyl Asbestos Tile	Good	3	B106 - 1' x 1' Floor Tile, Beige With White/Brown Streak	Vinyl Asbestos Tile, Pipeline Fitting Compound	Low	Manage	
B	B101d	Corridor	Sample	B67-ASB.23	29-Aug-16	Chrysotile	40%	Pipeline Fitting Compound	Poor/Mod	2	B101D - Pipe Fitting Compound Within Ceiling Space Adjacent Room B121	Vinyl Asbestos Tile, Pipeline Fitting Compound	Low/Mod	Manage	
B	B102											No Accessible ACM			
B	B103		Sample	B67-ASB.1	29-Aug-16	Chrysotile	75%	Pipeline Fitting Compound	Good	3	B103 - Pipe Fitting Compound On Medium Line Adjacent Book Shelf on North Wall - Line 1	Pipeline Fitting Compound, Plaster	Low	Manage	
B	B103		Sample	B67-ASB.2	29-Aug-16	Chrysotile	60%	Pipeline Fitting Compound	Good	3	B103 - Medium Pipe Fitting Compound On Medium Line Adjacent Book Shelf on North Wall - Line 2	Pipeline Fitting Compound, Plaster	Low	Manage	
B	B103		Sample	B67-ASB.3	29-Aug-16	Chrysotile	70%	Pipeline Fitting Compound	Good	3	B103 -Pipe Fitting Compound On Large Line Below Overhead Lights	Pipeline Fitting Compound, Plaster	Low	Manage	
B	B103		Sample	B67-ASB.4	29-Aug-16	No Asbestos Detected					B103 - Lineal Pipe Insulation	Pipeline Fitting Compound, Plaster			
B	B103		Sample	B67-ASB.5	29-Aug-16	No Asbestos Detected					B103 -Gray Fire Stop Parging At East Wall Penetration Above Book Shelf	Pipeline Fitting Compound, Plaster			
B	B103		Sample	B67-ASB.6	29-Aug-16	No Asbestos Detected					B103 - White Mud Compound At East Wall Pipe Penetration Above Book Shelf	Pipeline Fitting Compound, Plaster			

Civic Square East - 2016															
			SAMPLE DATA												
Room	Use	SAMPLE	Sample	Date	Asbestos	% of	Tradename			Description of	Asbestos Content	Potential for	Recommended		
Floor	Number	Use	SAMPLE REP	ID	DD/MM/YY	Type	Asbestos	ACM Product	Condition	Priority	Sample Location	In Area	Disturbance	Action	Comments
B	B103		Sample	B67-ASB.7	29-Aug-16	Chrysotile	2%	Plaster	Good	3	B103 - Wall Plaster On Pipe Chase On East Wall	Pipeline Fitting Compound, Plaster	Low	Manage	
B	B104	Washroom	Sample	B67-ASB.8	29-Aug-16	No Asbestos Detected					B104 - Drywall Mud Compound On South Wall	No Accessible ACM			
B	B104	Washroom	Sample	B67-ASB.9a	29-Aug-16	No Asbestos Detected					B104 - Plaster Skim Coat On East Wall	No Accessible ACM			
B	B104	Washroom	Sample	B67-ASB.9b	29-Aug-16	No Asbestos Detected					B104 - Plaster Base Coat On East Wall	No Accessible ACM			
B	B105	Women's W/C										No Accessible ACM			
B	B105a	Storage										No Accessible ACM			
B	B106	Green Room	Sample	B67-ASB.11	29-Aug-16	Chrysotile	1-5%	Vinyl Asbestos Tile	Good	3	B106 - 1' x 1' Floor Tile, Beige With White/Brown Streak	Vinyl Asbestos Tile, Pipeline Fitting Compound	Low	Manage	
B	B106	Green Room	Sample	B67-ASB.13	29-Aug-16	Chrysotile	70%	Pipeline Fitting Compound	Good	3	B106 - Pipe Fitting Compound on Medium Lines Above Ceiling Tile	Vinyl Asbestos Tile, Pipeline Fitting Compound	Low/Mod	Manage	
B	B106	Green Room	Sample	B67-ASB.14	29-Aug-16	No Asbestos Detected					B106 - 2' x 4' Ceiling Tile Pinhole/Fissured Pattern	Vinyl Asbestos Tile, Pipeline Fitting Compound			
B	B106a	Washroom	Sample	B67-ASB.15	29-Aug-16	No Asbestos Detected					B106A - Stone Pattern Sheet Flooring	No Accessible ACM			
B	B107	Green Room	Sample	B67-ASB.43	01-Sep-16	No Asbestos Detected					B107 - 2' x 4' Ceiling Tile Pin Hole/Deep Fissured Pattern	Pipeline Fitting Compound			
B	B107	Green Room	Sample	B67-ASB.44	01-Sep-16	Chrysotile	30%	Pipeline Fitting Compound	Good	3	B107 - Small Pipe Fitting Compound Above Suspended Ceiling	Pipeline Fitting Compound	Low	Manage	There is plaster debris above the CT behind entry door in corner & adj. corner above coat rack.
B	B107	Green Room	Sample	B67-ASB.45	01-Sep-16	No Asbestos Detected					B107 - 1' x 1' Floor Tile Underneath Carpet	Pipeline Fitting Compound			
B	B107a	Washroom										No Accessible ACM			
B	B108	Bassment Jazz Society	Sample	B67-ASB.35	01-Sep-16	No Asbestos Detected					B108 - 2' x 4' Ceiling Tile Pine Hole Pattern	No Accessible ACM			
B	B108	Office	Sample	B67-ASB.36a	01-Sep-16	No Asbestos Detected					B108 (Office) -Wall Plaster Skim Coat Above Ceiling Tile	No Accessible ACM			
B	B108	Office	Sample	B67-ASB.36b	01-Sep-16	No Asbestos Detected					B108 (Office) -Wall Plaster Base Coat Above Ceiling Tile	No Accessible ACM			
B	B108	Bassment Jazz Society	Sample	B67-ASB.38	01-Sep-16	No Asbestos Detected					B108 - Lineal Pipe Insulation	No Accessible ACM			

Civic Square East - 2016															
			SAMPLE DATA												
Room	Use	SAMPLE	Sample	Date	Asbestos	% of	Tradename			Description of	Asbestos Content	Potential for	Recommended		
Floor	Number	Use	SAMPLE REP	ID	DD/MM/YY	Type	Asbestos	ACM Product	Condition	Priority	Sample Location	In Area	Disturbance	Action	Comments
B	B108	Bassment Jazz Society	Sample	B67-ASB.37	01-Sep-16	No Asbestos Detected					B108 -Drywall Mud Compound Compilation	No Accessible ACM			
B	B108	Bassment Jazz Society	Sample	B67-ASB.41	01-Sep-16	No Asbestos Detected					B108 - Acoustical Board Throughout Area	No Accessible ACM			
B	B108	Kitchen Area	Sample	B67-ASB.39	01-Sep-16	No Asbestos Detected					B108 Kitchen Area - Blue Swirl Sheet Flooring	No Accessible ACM			
B	B108	Kitchen Area	Sample	B67-ASB.42	01-Sep-16	No Asbestos Detected					B108 Kitchen - Flex Tube Ducting	No Accessible ACM			
B	B108	Bar Area	Sample	B67-ASB.40	01-Sep-16	No Asbestos Detected					B108 Bar Area - 1' x 14" Floor Tile	No Accessible ACM			
B	B108a											No Accessible ACM			
B	B108b	Office										No Accessible ACM			
B	B109	Men's W/C	Sample	B67-ASB.34	29-Aug-16	No Asbestos Detected					B109 - Drywall Mud Compound Above Sink	No Accessible ACM			
B	B109a											No Accessible ACM			
B	B110		Sample Rep.	B67-ASB.1	29-Aug-16	Chrysotile	75%	Pipeline Fitting Compound	Good	3	B103 - Pipe Fitting Compound On Medium Line Adjacent Book Shelf on North Wall - Line 1	Pipeline Fitting Compound	Low	Manage	
B	B111		Sample	B67-ASB.27	29-Aug-16	No Asbestos Detected					B111 - Peg Board On North Wall	Vinyl Asbestos Tile			
B	B111		Sample	B67-ASB.28	29-Aug-16	No Asbestos Detected					B111 - Drywall Mud Compound On Ceiling Adjacent Fire Damper Box	Vinyl Asbestos Tile			
B	B111		Sample Rep.	B67-ASB.11	29-Aug-16	Chrysotile	1-5%	Vinyl Asbestos Tile	Good	3	B106 - 1' x 1' Floor Tile, Beige With White/Brown Streak	Vinyl Asbestos Tile	Low	Manage	
B	B112	Storage										No Accessible ACM			
B	B113	Boiler Room	Sample	B67-ASB.30	29-Aug-16	Chrysotile	70%	Pipeline Fitting Compound	Good	3	B113 - Small Pipe Fitting Compound On Gray Lines Overhead Entry Door	Pipeline Fitting Compound	Low	Manage	
B	B113	Boiler Room	Sample	B67-ASB.31	29-Aug-16	No Asbestos Detected					B113 -Pipe Fitting Compound on Overhead Orange Lines Above Boiler	Pipeline Fitting Compound			
B	B113	Boiler Room	Sample	B67-ASB.32	29-Aug-16	No Asbestos Detected					B113 - Rope Gasket On Boiler Doors	Pipeline Fitting Compound			
B	B113	Boiler Room	Sample	B67-ASB.33	29-Aug-16	No Asbestos Detected					B113 - Lineal Pipe Insulation	Pipeline Fitting Compound			

Civic Square East - 2016															
			SAMPLE DATA												
Room	Use	SAMPLE	Sample	Date	Asbestos	% of	Tradename				Description of	Asbestos Content	Potential for	Recommended	
Floor	Number	Use	SAMPLE REP	ID	DD/MM/YY	Type	ACM Product	Condition	Priority	Sample Location	In Area	Disturbance	Action	Comments	
B	B114	Maint. Workshop										Pipeline Fitting Compound			
B	B115	Mech. Room	Sample	B67-ASB.25	29-Aug-16	Chrysotile	Pipeline Fitting Compound	Mod/Good	3	B115 -Pipe Fitting Compound On Small Lines Adjacent "Pit"	Pipeline Fitting Compound, Duct Insulation	Low	Manage		
B	B115	Mech. Room	Sample	B67-ASB.26	29-Aug-16	Chrysotile	Duct Insulation	Good	3	B115 -Duct Insulation Above AHU #1	Pipeline Fitting Compound, Duct Insulation	Low	Manage		
B	B116	Generator Room	Sample Rep.	B67-ASB.25	29-Aug-16	Chrysotile	Pipeline Fitting Compound	Mod/Good	3	B115 -Pipe Fitting Compound On Small Lines Adjacent "Pit"	Pipeline Fitting Compound, Duct Insulation	Low	Manage		
B	B116	Generator Room	Sample Rep.	B67-ASB.26	29-Aug-16	Chrysotile	Duct Insulation	Good	3	B115 -Duct Insulation Above AHU #1	Pipeline Fitting Compound, Duct Insulation	Low	Manage		
B	B117	Electrical Room	Sample Rep.	B67-ASB.16	29-Aug-16	Chrysotile	Pipeline Fitting Compound	Poor	2	B119 -Pipe Fitting Compound, Small Overhead Lines Adjacent to Heater	Pipeline Fitting Compound	Low	Repair/Remove	In vertical pipe chase in South East corner	
B	B119		Sample	B67-ASB.16	29-Aug-16	Chrysotile	Pipeline Fitting Compound	Good	3	B119 -Pipe Fitting Compound, Small Overhead Lines Adjacent to Heater	Pipeline Fitting Compound	Low	Manage		
B	B119		Sample	B67-ASB.17	29-Aug-16	No Asbestos Detected				B119 -Fire Stop Putty At Conduit Wall Penetration	No Accessible ACM				
B	B119		Sample	B67-ASB.18	29-Aug-16	No Asbestos Detected				B119 - Lineal Pipe Insulation	No Accessible ACM				
B	B120	Storage	Sample	B67-ASB.20	29-Aug-16	No Asbestos Detected				B120 - 1' x 1' Floor Tile Off-White With Beige Fleck	Pipeline Fitting Compound				
B	B120	Storage	Sample Rep.	B67-ASB.21	29-Aug-16	Chrysotile	Pipeline Fitting Compound	Good	3	B121/120 - Pipe Fitting Compound Compilation On Overhead Lines Above Suspended	Pipeline Fitting Compound	Low	Manage		
B	B121	Operator Room	Sample	B67-ASB.21	29-Aug-16	Chrysotile	Pipeline Fitting Compound	Good	3	B121/120 - Pipe Fitting Compound Compilation On Overhead Lines Above Suspended	Pipeline Fitting Compound	Low	Manage		
B	B121	Operator Room	Sample	B67-ASB.22	29-Aug-16	Chrysotile	Pipeline Fitting Compound	Mod/Good	2	B121 - Pipe Fitting Compound on Blue Pipe Sensor on Adjacent Outlet	Pipeline Fitting Compound	Low	Repair/Remove		
B	B122	Storage Area	Sample Rep.	B67-ASB.21	29-Aug-16	Chrysotile	Pipeline Fitting Compound	Poor/Mod	1	B121/120 - Pipe Fitting Compound Compilation On Overhead Lines Above Suspended	Pipeline Fitting Compound	Low	Repair/Remove	Two fittings adj. entry to 123.	
B	B123		Sample Rep.	B67-ASB.21	29-Aug-16	Chrysotile	Pipeline Fitting Compound	Moderate	1	B121/120 - Pipe Fitting Compound Compilation On Overhead Lines Above Suspended	Pipeline Fitting Compound	Low	Repair/Remove	Entry to 123	
B	B124	Project Services Storage	Sample Rep.	B67-ASB.21	29-Aug-16	Chrysotile	Pipeline Fitting Compound	Poor/Mod	1	B121/120 - Pipe Fitting Compound Compilation On Overhead Lines Above Suspended	Pipeline Fitting Compound	Low	Repair/Remove	Damaged fittings on south wall overhead adj. green shelving units and in Northwest corner adj. blue shelving units	

Civic Square East - 2016															
			SAMPLE DATA												
Floor	Room Number	Use	SAMPLE REP	Sample ID	Date DD/MM/YY	Asbestos Type	% of Asbestos	Tradename ACM Product	Condition	Priority	Description of Sample Location	Asbestos Content In Area	Potential for Disturbance	Recommended Action	Comments
B	B125	Stairwell(Closed)	Sample	B67-ASB.24	29-Aug-16	No Asbestos Detected					B125 - Lineal Pipe Insulation	Pipeline Fitting Compound			
B	B125	Stairwell(Closed)	Sample Rep.	B67-ASB.21	29-Aug-16	Chrysotile	65%	Pipeline Fitting Compound	Good	3	B121/120 - Pipe Fitting Compound Compilation On Overhead Lines Above Suspended	Pipeline Fitting Compound	Low	Manage	
B	S-1	Stairwell										No Accessible ACM			
B	S-2	Stairwell	Sample	B67-ASB.19a	29-Aug-16	No Asbestos Detected					S2 -Plaster Skim Coat Adjacent Stairs Overhead	No Accessible ACM			
B	S-2	Stairwell	Sample	B67-ASB.19b	29-Aug-16	No Asbestos Detected					S2 -Plaster Base Coat Adjacent Stairs Overhead	No Accessible ACM			
B	E-1	Elevator										No Accessible ACM			
B	E-2	Elevator										No Accessible ACM			
B	E-3	Freight Elevator										No Accessible ACM			
M		Vestibule	Sample	B67-ASB.96	12-Sep-16	Chrysotile	30%	Pipeline Fitting Compound	Good	3	Main Floor Vestibule - Pipe Fitting Compound Above Suspended Ceiling	Pipeline Fitting Compound	Low	Manage	Fittings also above suspended ceiling tiles in front of elevators in corners
M	100		Sample	B67-ASB.49	03-Sep-16	No Asbestos Detected					100 - Plaster With Skim Coat Adjacent Double Door Entry	Pipeline Fitting Compound			
M	100		Sample	B67-ASB.50	03-Sep-16	No Asbestos Detected					100 - 14" x 14" Floor Tile	Pipeline Fitting Compound			
M	100		Sample	B67-ASB.51	03-Sep-16	No Asbestos Detected					100 - Drywall Mud Compound Compilation	Pipeline Fitting Compound			
M	100		Sample	B67-ASB.52	03-Sep-16	No Asbestos Detected					100 - 2' x 2' Ceiling Tile Pin Hole/Large Pin Hole Pattern	Pipeline Fitting Compound			
M	100		Sample	B67-ASB.53a	03-Sep-16	No Asbestos Detected					100 - Plaster Skim Coat On Column Above Ceiling Tile	Pipeline Fitting Compound			Plaster Debris above Suspended Ceiling
M	100		Sample	B67-ASB.53b	03-Sep-16	No Asbestos Detected					100 - Plaster Base Coat On Column Above Ceiling Tile	Pipeline Fitting Compound			Plaster Debris above Suspended Ceiling
M	100		Sample	B67-ASB.54	03-Sep-16	Chrysotile	60%	Pipeline Fitting Compound	Poor/Mod	2	100 - Pipe Fitting Compound Above Ceiling Tile Within Column Pipe Chase	Pipeline Fitting Compound	Low	Repair/Remove	
M	100		Sample	B67-ASB.55	03-Sep-16	No Asbestos Detected					100 - Lineal Pipe Insulation Above Suspended Ceiling	Pipeline Fitting Compound			

Civic Square East - 2016															
			SAMPLE DATA												
Room	Sample	Sample	Date	Asbestos	% of	Tradename				Description of	Asbestos Content	Potential for	Recommended		
Floor	Number	Use	SAMPLE REP	ID	DD/MM/YY	Type	s	ACM Product	Condition	Priority	Sample Location	In Area	Disturbance	Action	Comments
M	100	Meeting Room	Sample	B67-ASB.56a	03-Sep-16	No Asbestos Detected					100 Meeting Room - Plaster Skim Coat On East Wall Above Suspended Ceiling	Pipeline Fitting Compound			
M	100	Meeting Room	Sample	B67-ASB.56b	03-Sep-16	No Asbestos Detected					100 Meeting Room - Plaster Base Coat On East Wall Above Suspended Ceiling	Pipeline Fitting Compound			
M		Vault	Sample Rep.	B67-ASB.96	12-Sep-16	Chrysotile	30%	Pipeline Fitting Compound	Poor/Mod	1	Main Floor Vestibule - Pipe Fitting Compound Above Suspended Ceiling	Pipeline Fitting Compound	Low	Cleanup/Manage	Fittings above vault in enclosed ceiling space. Significant amount of debris on top of Vault.
M		Back Entrance										No Accessible ACM			
M		Main Corridor	Sample Rep.	B67-ASB.96	12-Sep-16	Chrysotile	30%	Pipeline Fitting Compound	Moderate	3	Main Floor Vestibule - Pipe Fitting Compound Above Suspended Ceiling	Pipeline Fitting Compound	Low	Manage	Adj. Vault entry above ceiling tile Northeast Corner
M		Meeting Room										No Accessible ACM			
M		Public Washroom										No Accessible ACM			
M	101	Saskatoon Tourism	Sample	B67-ASB.58	03-Sep-16	No Asbestos Detected					101 - Gray Flex Ducting Above Suspended Ceiling	No Accessible ACM			
M	101	Saskatoon Tourism	Sample	B67-ASB.59a	03-Sep-16	No Asbestos Detected					101 - Plaster Skim Coat Compilation Sample From Columns	No Accessible ACM			Plaster Debris Above Suspended Ceiling and on Ceiling Grid
M	101	Saskatoon Tourism	Sample	B67-ASB.59b	03-Sep-16	No Asbestos Detected					101 - Plaster Base Coat Compilation Sample From Columns	No Accessible ACM			Plaster Debris Above Suspended Ceiling and on Ceiling Grid
M	101	Saskatoon Tourism	Sample	B67-ASB.60	03-Sep-16	No Asbestos Detected					101 - Drywall Mud Compound Compilation Sample	No Accessible ACM			
M	101a	Office	Sample	B67-ASB.57	03-Sep-16	No Asbestos Detected					101a - White Insulation Above Suspended Ceiling	No Accessible ACM			
M	101b	Office										No Accessible ACM			
M	101c	Office										No Accessible ACM			
M	101d	Office										No Accessible ACM			
M	101e	Office										No Accessible ACM			
M	101f	Office										No Accessible ACM			
M	101g	Office										No Accessible ACM			
M	102	Sask Tourism Education Council	Sample	B67-ASB.61a	03-Sep-16	No Asbestos Detected					102 - Plaster Skim Coat On Columns Compilation	No Accessible ACM			

Civic Square East - 2016															
			SAMPLE DATA												
Room	Use	SAMPLE	Sample	Date	Asbestos	% of	Tradename			Description of	Asbestos Content	Potential for	Recommended		
Floor	Number	Use	SAMPLE REP	ID	DD/MM/YY	Type	Asbestos	ACM Product	Condition	Priority	Sample Location	In Area	Disturbance	Action	Comments
M	102	Sask Tourism Education Council	Sample	B67-ASB.61b	03-Sep-16	No Asbestos Detected					102 - Plaster Base Coat On Columns Compilation	No Accessible ACM			
M	102	Sask Tourism Education Council	Sample	B67-ASB.63	03-Sep-16	No Asbestos Detected					102 - Lineal Pipe Insulation Above Suspended Ceiling	No Accessible ACM			
M	102	Sask Tourism Education Council	Sample	B67-ASB.64	03-Sep-16	No Asbestos Detected					102 - Drywall Mud Compound Compilation	No Accessible ACM			
M	102a	Office										No Accessible ACM			
M	102b	Office										No Accessible ACM			
M	102c	Office										No Accessible ACM			
M	102d	Office										No Accessible ACM			
M	102e	Office	Sample	B67-ASB.62	03-Sep-16	No Asbestos Detected					102e - Silver Duct Wrap Insulation	No Accessible ACM			
M	102f	Office										No Accessible ACM			
M	102g	Office										No Accessible ACM			
M	102h	Office										No Accessible ACM			
M	102i	Office										No Accessible ACM			
M	102j	Office										No Accessible ACM			
M	102k	Office										No Accessible ACM			
M	102l	Office										No Accessible ACM			
M	102m	Office										No Accessible ACM			
M	102n	Office										No Accessible ACM			
M	102o	Office										No Accessible ACM			
M	102p	Office										No Accessible ACM			
M	102q	Office										No Accessible ACM			
M	102r	Office										No Accessible ACM			
M	102s	Office	Sample	B67-ASB.65a	03-Sep-16	No Asbestos Detected					102s/102u - Plaster Skim Coat Compilation	No Accessible ACM			
M	102s	Office	Sample	B67-ASB.65b	03-Sep-16	No Asbestos Detected					102s/102u - Plaster Base Coat Compilation	No Accessible ACM			

Civic Square East - 2016															
			SAMPLE DATA												
Room	Use	SAMPLE	Sample	Date	Asbestos	% of	Tradename				Description of	Asbestos Content	Potential for	Recommended	
Floor	Number	Use	SAMPLE REP	ID	DD/MM/YY	Type	Asbestos	ACM Product	Condition	Priority	Sample Location	In Area	Disturbance	Action	Comments
M	102t	Office										No Accessible ACM			
M	102u	Office										No Accessible ACM			
M	102v	Office										No Accessible ACM			
M	103	SREDA										No Accessible ACM			
M	103a	Office										No Accessible ACM			
M	103b	Office										No Accessible ACM			
M	103c	Office										No Accessible ACM			
M	103d	Office										No Accessible ACM			
M	103e	Copier Room										No Accessible ACM			
M	104	The Chamber	Sample	B67-ASB.68a	03-Sep-16	No Asbestos Detected					104 - Wall Plaster Skim Coat	No Accessible ACM			
M	104	The Chamber	Sample	B67-ASB.68b	03-Sep-16	No Asbestos Detected					104 - Wall Plaster Base Coat	No Accessible ACM			
M	104	The Chamber	Sample	B67-ASB.69	03-Sep-16	No Asbestos Detected					104/Corridor - Drywall Mud Compound Compilation	No Accessible ACM			
M	104a											No Accessible ACM			
M	104b											No Accessible ACM			
M	104c											No Accessible ACM			
M	104d											No Accessible ACM			
M		Staffroom										No Accessible ACM			
M		Men's W/C										No Accessible ACM			
M		Women's W/C										No Accessible ACM			
M		Loading Dock	Sample	B67-ASB.46	01-Sep-16	No Asbestos Detected					Main Floor Loading Dock - Lineal Pipe Insulation On HWHR/HWHS Lines	No Accessible ACM			
M		Loading Dock	Sample	B67-ASB.47	01-Sep-16	No Asbestos Detected					Main Floor Loading Dock - Drywall Mud Compound Compilation	No Accessible ACM			
M		Loading Dock	Sample	B67-ASB.48a	01-Sep-16	No Asbestos Detected					Main Floor Loading Dock - Plaster Skim Coat	No Accessible ACM			

Civic Square East - 2016															
			SAMPLE DATA												
Room	Sample	Date	Asbestos	% of	Tradename	Description of	Asbestos Content	Potential for	Recommended						
Floor	Number	Use	SAMPLE REP	ID	DD/MM/YY	Type	s	ACM Product	Condition	Priority	Sample Location	In Area	Disturbance	Action	Comments
M		Loading Dock	Sample	B67-ASB.48b	01-Sep-16	No Asbestos Detected					Main Floor Loading Dock - Plaster Base Coat	No Accessible ACM			
M		Loading Dock	Sample	B67-ASB.48c	01-Sep-16	No Asbestos Detected					Main Floor Loading Dock - Plaster Base Coat #2	No Accessible ACM			
M		South East Corridor	Sample	B67-ASB.66a	03-Sep-16	No Asbestos Detected					Main Floor South East Corridor - Ceiling Plaster Skim Coat	No Accessible ACM			
M		South East Corridor	Sample	B67-ASB.66b	03-Sep-16	No Asbestos Detected					Main Floor South East Corridor - Ceiling Plaster Base Coat	No Accessible ACM			
M		South East Corridor	Sample	B67-ASB.67a	03-Sep-16	No Asbestos Detected					Main Floor South East Corridor - Wall Plaster Skim Coat	No Accessible ACM			
M		South East Corridor	Sample	B67-ASB.67b	03-Sep-16	No Asbestos Detected					Main Floor South East Corridor - Wall Plaster Base Coat	No Accessible ACM			
M		Boardroom	Sample	B67-ASB.70	03-Sep-16	No Asbestos Detected					Main Floor Boardroom - Lineal Pipe Insulation Above Suspended Ceiling	No Accessible ACM			
M		Spy Channel	Sample	B67-ASB.99a	12-Sep-16	No Asbestos Detected					Main Floor Spy Channel - Plaster Skim Coat	No Accessible ACM			
M		Spy Channel	Sample	B67-ASB.99b	12-Sep-16	No Asbestos Detected					Main Floor Spy Channel - Plaster Base Coat	No Accessible ACM			
M		Pipe Chase	Sample Rep.	B67-ASB.26	29-Aug-16	Chrysotile	60%	Duct Insulation	Good	3	B115 -Duct Insulation Above AHU #1	Duct Insulation	Low	Manage	
M	S-1	Stairwell										No Accessible ACM			
M	S-2	Stairwell										No Accessible ACM			
M	E-1	Elevator										No Accessible ACM			
M	E-2	Elevator										No Accessible ACM			
M	E-3	Freight Elevator										No Accessible ACM			
2	200	Vestibule										No Accessible ACM			
2	201	Corridor	Sample	B67-ASB.106	25-Sep-16	No Asbestos Detected					201 - Drywall Mud Compilation	No Accessible ACM			
2	202											No Accessible ACM			
2	203	W/C										No Accessible ACM			
2	204	Office										No Accessible ACM			
2	205	Office										No Accessible ACM			
2	206	Corridor										No Accessible ACM			
2	207	Office										No Accessible ACM			
2	208	Office										No Accessible ACM			

Civic Square East - 2016															
			SAMPLE DATA												
Floor	Room Number	Use	SAMPLE	Sample ID	Date	Asbestos Type	% of Asbestos	Tradename	Condition	Priority	Description of Sample Location	Asbestos Content	Potential for Disturbance	Recommended Action	Comments
2	209	Office										No Accessible ACM			
2	210	Office										No Accessible ACM			
2	211	Office										No Accessible ACM			
2	212	Office										No Accessible ACM			
2	213	Office										No Accessible ACM			
2	214		Sample	B67-ASB.107	25-Sep-16	No Asbestos Detected					214 - 1' x 1' Ceiling Tile Small Pin Hole & Textured Pattern	No Accessible ACM			
2	215	Storage										No Accessible ACM			
2	216	Server Room	Sample	B67-ASB.108	25-Sep-16	No Asbestos Detected					216 - 1' x 1' Floor Tile Light Gray w/ White & Dark Gray Fleck	No Accessible ACM			
2	217											No Accessible ACM			
2	218	Office										No Accessible ACM			
2	219	Office										No Accessible ACM			
2	220	Office										No Accessible ACM			
2	221	Office										No Accessible ACM			
2	222	Office										No Accessible ACM			
2	223	Washroom										No Accessible ACM			
2	224	Washroom										No Accessible ACM			
2	225		Sample	B67-ASB.100	12-Sep-16	Chrysotile	30%	Pipeline Fitting Compound	Poor/Mod	2	225 - Pipe Fitting Compound In Wall Access Hatch	Pipeline Fitting Compound	Low	Manage	
2	227	Washroom										No Accessible ACM			
2	228	Washroom										No Accessible ACM			
2	229	Electrical Room										No Accessible ACM			
2	230		Sample	B67-ASB.113a	25-Sep-16	No Asbestos Detected					230 - Plaster Skim Coat Compilation	No Accessible ACM			
2	230		Sample	B67-ASB.113b	25-Sep-16	No Asbestos Detected					230 - Plaster Base Coat Compilation	No Accessible ACM			
2	231		Sample	B67-ASB.105	25-Sep-16	No Asbestos Detected					231 - Lineal Pipe Insulation	No Accessible ACM			
2	226	Spy Channel	Sample	B67-ASB.101	12-Sep-16	No Asbestos Detected					2nd Floor Spy Channel - Rope Gasket Material	Pipeline Fitting Compound			
2	226	Spy Channel	Sample	B67-ASB.102	12-Sep-16	Chrysotile	40%	Pipeline Fitting Compound	Poor/Mod	1	2nd Floor Spy Channel - Pipe Fitting Compound Compilation Sample	Pipeline Fitting Compound	Low	Repair/Remove	
2		Pipe Chase										No Accessible ACM			
2	S-1	Stairwell										No Accessible ACM			
2	S-2	Stairwell										No Accessible ACM			
2	E-1	Elevator										No Accessible ACM			
2	E-2	Elevator										No Accessible ACM			
2	E-3	Freight Elevator										No Accessible ACM			

Civic Square East - 2016															
			SAMPLE DATA												
Floor	Room Number	Use	SAMPLE REP	Sample ID	Date DD/MM/YY	Asbestos Type	% of Asbestos	Tradename ACM Product	Condition	Priority	Description of Sample Location	Asbestos Content In Area	Potential for Disturbance	Recommended Action	Comments
3	3rd Floor	Area	Sample	B67-ASB.77	07-Sep-16	No Asbestos Detected					3rd Floor Area - Brown Paneling Along Upper Walls Throughout Floor	No Accessible ACM			
3	3rd Floor	Area	Sample	B67-ASB.88	07-Sep-16	No Asbestos Detected					3rd Floor - Drywall Mud Compilation	No Accessible ACM			
3	301	Vestibule	Sample Rep.	B67-ASB.73	07-Sep-16	Chrysotile	75%	Pipeline Fitting Compound	Poor	1	324/316/303/325 Area - Pipe Fitting Compound Compilation From Overhead Lines	Pipeline Fitting Compound	Low	Repair/Remove	Above ceiling tile adj. windows.
3	302	Corridor	Sample	B67-ASB.81	07-Sep-16	No Asbestos Detected					302 Corridor Adj. 342 - Medium Pipe Fitting Compound On Black Lines Above Suspended Ceiling	No Accessible ACM			
3	303	Corridor & Area	Sample Rep.	B67-ASB.73	07-Sep-16	Chrysotile	75%	Pipeline Fitting Compound	Good	3	324/316/303/325 Area - Pipe Fitting Compound Compilation From Overhead Lines	Pipeline Fitting Compound	Low	Manage	
3	303a		Sample Rep.	B67-ASB.73	07-Sep-16	Chrysotile	75%	Pipeline Fitting Compound	Good	3	324/316/303/325 Area - Pipe Fitting Compound Compilation From Overhead Lines	Pipeline Fitting Compound	Low	Manage	
3	303b		Sample Rep.	B67-ASB.73	07-Sep-16	Chrysotile	75%	Pipeline Fitting Compound	Good	3	324/316/303/325 Area - Pipe Fitting Compound Compilation From Overhead Lines	Pipeline Fitting Compound	Low	Manage	
3	303c		Sample Rep.	B67-ASB.73	07-Sep-16	Chrysotile	75%	Pipeline Fitting Compound	Good	3	324/316/303/325 Area - Pipe Fitting Compound Compilation From Overhead Lines	Pipeline Fitting Compound	Low	Manage	
3	303d		Sample Rep.	B67-ASB.73	07-Sep-16	Chrysotile	75%	Pipeline Fitting Compound	Good	3	324/316/303/325 Area - Pipe Fitting Compound Compilation From Overhead Lines	Pipeline Fitting Compound	Low	Manage	
3	303e		Sample Rep.	B67-ASB.73	07-Sep-16	Chrysotile	75%	Pipeline Fitting Compound	Good	3	324/316/303/325 Area - Pipe Fitting Compound Compilation From Overhead Lines	Pipeline Fitting Compound	Low	Manage	
3	303f		Sample Rep.	B67-ASB.73	07-Sep-16	Chrysotile	75%	Pipeline Fitting Compound	Good	3	324/316/303/325 Area - Pipe Fitting Compound Compilation From Overhead Lines	Pipeline Fitting Compound	Low	Manage	
3	303g		Sample Rep.	B67-ASB.73	07-Sep-16	Chrysotile	75%	Pipeline Fitting Compound	Good	3	324/316/303/325 Area - Pipe Fitting Compound Compilation From Overhead Lines	Pipeline Fitting Compound	Low	Manage	
3	303h		Sample Rep.	B67-ASB.73	07-Sep-16	Chrysotile	75%	Pipeline Fitting Compound	Good	3	324/316/303/325 Area - Pipe Fitting Compound Compilation From Overhead Lines	Pipeline Fitting Compound	Low	Manage	
3	304a	Storage										No Accessible ACM			

Civic Square East - 2016															
			SAMPLE DATA												
Floor	Room Number	Use	SAMPLE REP	Sample ID	Date DD/MM/YY	Asbestos Type	% of Asbestos	Tradename ACM Product	Condition	Priority	Description of Sample Location	Asbestos Content In Area	Potential for Disturbance	Recommended Action	Comments
3	304b	Storage	Sample Rep.	B67-ASB.73	07-Sep-16	Chrysotile	75%	Pipeline Fitting Compound	Good	3	324/316/303/325 Area - Pipe Fitting Compound Compilation From Overhead Lines	Pipeline Fitting Compound	Low	Manage	
3	305											No Accessible ACM			
3	306	Training Room #2										No Accessible ACM			
3	307	Meeting Room #3.3										No Accessible ACM			
3	308											No Accessible ACM			
3	309											No Accessible ACM			
3	310	Meeting Room #3.2										No Accessible ACM			
3	311	OH&S										No Accessible ACM			
3	312	Corridor	Sample	B67-ASB.75	07-Sep-16	No Asbestos Detected					312 Corridor - 16" x 16" Blue Floor Tile	No Accessible ACM			
3	312	Corridor	Sample Rep.	B67-ASB.73	07-Sep-16	Chrysotile	75%	Pipeline Fitting Compound	Good	3	324/316/303/325 Area - Pipe Fitting Compound Compilation From Overhead Lines	Pipeline Fitting Compound	Low	Manage	
3	313		Sample Rep.	B67-ASB.73	07-Sep-16	Chrysotile	75%	Pipeline Fitting Compound	Good	3	324/316/303/325 Area - Pipe Fitting Compound Compilation From Overhead Lines	Pipeline Fitting Compound	Low	Manage	
3	314	MP										No Accessible ACM			
3	315	SW										No Accessible ACM			
3	316	Corridor & Area	Sample Rep.	B67-ASB.73	07-Sep-16	Chrysotile	75%	Pipeline Fitting Compound	Good	3	324/316/303/325 Area - Pipe Fitting Compound Compilation From Overhead Lines	Pipeline Fitting Compound	Low	Manage	
3	316a	Major Projects	Sample Rep.	B67-ASB.73	07-Sep-16	Chrysotile	75%	Pipeline Fitting Compound	Good	3	324/316/303/325 Area - Pipe Fitting Compound Compilation From Overhead Lines	Pipeline Fitting Compound	Low	Manage	
3	316b	Major Projects	Sample Rep.	B67-ASB.73	07-Sep-16	Chrysotile	75%	Pipeline Fitting Compound	Good	3	324/316/303/325 Area - Pipe Fitting Compound Compilation From Overhead Lines	Pipeline Fitting Compound	Low	Manage	
3	316c	Major Projects	Sample Rep.	B67-ASB.73	07-Sep-16	Chrysotile	75%	Pipeline Fitting Compound	Good	3	324/316/303/325 Area - Pipe Fitting Compound Compilation From Overhead Lines	Pipeline Fitting Compound	Low	Manage	
3	316d	Major Projects	Sample Rep.	B67-ASB.73	07-Sep-16	Chrysotile	75%	Pipeline Fitting Compound	Good	3	324/316/303/325 Area - Pipe Fitting Compound Compilation From Overhead Lines	Pipeline Fitting Compound	Low	Manage	
3	316e	Major Projects	Sample Rep.	B67-ASB.73	07-Sep-16	Chrysotile	75%	Pipeline Fitting Compound	Good	3	324/316/303/325 Area - Pipe Fitting Compound Compilation From Overhead Lines	Pipeline Fitting Compound	Low	Manage	
3	316f	Major Projects	Sample Rep.	B67-ASB.73	07-Sep-16	Chrysotile	75%	Pipeline Fitting Compound	Good	3	324/316/303/325 Area - Pipe Fitting Compound Compilation From Overhead Lines	Pipeline Fitting Compound	Low	Manage	

Civic Square East - 2016															
			SAMPLE DATA												
Room	Use	SAMPLE	Sample	Date	Asbestos	% of	Tradename			Description of	Asbestos Content	Potential for	Recommended		
Floor	Number	Use	SAMPLE REP	ID	DD/MM/YY	Type	ACM Product	Condition	Priority	Sample Location	In Area	Disturbance	Action	Comments	
3	316g	Major Projects	Sample Rep.	B67-ASB.73	07-Sep-16	Chrysotile	Pipeline Fitting Compound	Good	3	324/316/303/325 Area - Pipe Fitting Compound Compilation From Overhead Lines	Pipeline Fitting Compound	Low	Manage		
3	316h	Major Projects	Sample Rep.	B67-ASB.73	07-Sep-16	Chrysotile	Pipeline Fitting Compound	Good	3	324/316/303/325 Area - Pipe Fitting Compound Compilation From Overhead Lines	Pipeline Fitting Compound	Low	Manage		
3	316j	Major Projects	Sample Rep.	B67-ASB.73	07-Sep-16	Chrysotile	Pipeline Fitting Compound	Good	3	324/316/303/325 Area - Pipe Fitting Compound Compilation From Overhead Lines	Pipeline Fitting Compound	Low	Manage		
3	316k	Major Projects	Sample Rep.	B67-ASB.73	07-Sep-16	Chrysotile	Pipeline Fitting Compound	Good	3	324/316/303/325 Area - Pipe Fitting Compound Compilation From Overhead Lines	Pipeline Fitting Compound	Low	Manage		
3	317	MP									No Accessible ACM				
3	318	MP									No Accessible ACM				
3	319	MP	Sample	B67-ASB.78	07-Sep-16	Chrysotile	Pipeline Fitting Compound	Moderate	2	319 - Pipeline Fitting Debris Above Ceiling Tile	Pipeline Fitting Compound	Moderate	Cleanup/Manage		
3	320	Women's W/C									No Accessible ACM				
3	321	Corridor									No Accessible ACM				
3	322	MP									No Accessible ACM				
3	323	Office	Sample Rep.	B67-ASB.73	07-Sep-16	Chrysotile	Pipeline Fitting Compound	Good	3	324/316/303/325 Area - Pipe Fitting Compound Compilation From Overhead Lines	Pipeline Fitting Compound	Low	Manage	Above Ceiling Tile	
3	324 Area	Construction & Design	Sample Rep.	B67-ASB.73	07-Sep-16	Chrysotile	Pipeline Fitting Compound	Good	3	324/316/303/325 Area - Pipe Fitting Compound Compilation From Overhead Lines	Pipeline Fitting Compound	Low	Manage		
3	324a	Construction & Design	Sample Rep.	B67-ASB.73	07-Sep-16	Chrysotile	Pipeline Fitting Compound	Good	3	324/316/303/325 Area - Pipe Fitting Compound Compilation From Overhead Lines	Pipeline Fitting Compound	Low	Manage		
3	324b	Construction & Design	Sample Rep.	B67-ASB.73	07-Sep-16	Chrysotile	Pipeline Fitting Compound	Good	3	324/316/303/325 Area - Pipe Fitting Compound Compilation From Overhead Lines	Pipeline Fitting Compound	Low	Manage		
3	324c	Construction & Design	Sample Rep.	B67-ASB.73	07-Sep-16	Chrysotile	Pipeline Fitting Compound	Good	3	324/316/303/325 Area - Pipe Fitting Compound Compilation From Overhead Lines	Pipeline Fitting Compound	Low	Manage		
3	324d	Construction & Design	Sample Rep.	B67-ASB.73	07-Sep-16	Chrysotile	Pipeline Fitting Compound	Good	3	324/316/303/325 Area - Pipe Fitting Compound Compilation From Overhead Lines	Pipeline Fitting Compound	Low	Manage		
3	324e	Construction & Design	Sample Rep.	B67-ASB.73	07-Sep-16	Chrysotile	Pipeline Fitting Compound	Good	3	324/316/303/325 Area - Pipe Fitting Compound Compilation From Overhead Lines	Pipeline Fitting Compound	Low	Manage		

Civic Square East - 2016															
			SAMPLE DATA												
Room	Use	SAMPLE	Sample	Date	Asbestos	% of	Tradename			Description of	Asbestos Content	Potential for	Recommended		
Floor	Number	Use	SAMPLE REP	ID	DD/MM/YY	Type	ACM Product	Condition	Priority	Sample Location	In Area	Disturbance	Action	Comments	
3	324f	Construction & Design	Sample Rep.	B67-ASB.73	07-Sep-16	Chrysotile	Pipeline Fitting Compound	Good	3	324/316/303/325 Area - Pipe Fitting Compound Compilation From Overhead Lines	Pipeline Fitting Compound	Low	Manage		
3	324g	Construction & Design	Sample Rep.	B67-ASB.73	07-Sep-16	Chrysotile	Pipeline Fitting Compound	Good	3	324/316/303/325 Area - Pipe Fitting Compound Compilation From Overhead Lines	Pipeline Fitting Compound	Low	Manage		
3	324h	Construction & Design	Sample Rep.	B67-ASB.73	07-Sep-16	Chrysotile	Pipeline Fitting Compound	Good	3	324/316/303/325 Area - Pipe Fitting Compound Compilation From Overhead Lines	Pipeline Fitting Compound	Low	Manage		
3	324j	Construction & Design	Sample Rep.	B67-ASB.73	07-Sep-16	Chrysotile	Pipeline Fitting Compound	Good	3	324/316/303/325 Area - Pipe Fitting Compound Compilation From Overhead Lines	Pipeline Fitting Compound	Low	Manage		
3	324k	Construction & Design	Sample Rep.	B67-ASB.73	07-Sep-16	Chrysotile	Pipeline Fitting Compound	Good	3	324/316/303/325 Area - Pipe Fitting Compound Compilation From Overhead Lines	Pipeline Fitting Compound	Low	Manage		
3	324l	Construction & Design	Sample Rep.	B67-ASB.73	07-Sep-16	Chrysotile	Pipeline Fitting Compound	Good	3	324/316/303/325 Area - Pipe Fitting Compound Compilation From Overhead Lines	Pipeline Fitting Compound	Low	Manage		
3	324m	Construction & Design	Sample Rep.	B67-ASB.73	07-Sep-16	Chrysotile	Pipeline Fitting Compound	Good	3	324/316/303/325 Area - Pipe Fitting Compound Compilation From Overhead Lines	Pipeline Fitting Compound	Low	Manage		
3	324n	Construction & Design	Sample	B67-ASB.73	07-Sep-16	Chrysotile	Pipeline Fitting Compound	Good	3	324/316/303/325 Area - Pipe Fitting Compound Compilation From Overhead Lines	Pipeline Fitting Compound	Low	Manage		
3	324p	Construction & Design	Sample Rep.	B67-ASB.73	07-Sep-16	Chrysotile	Pipeline Fitting Compound	Good	3	324/316/303/325 Area - Pipe Fitting Compound Compilation From Overhead Lines	Pipeline Fitting Compound	Low	Manage		
3	324q	Construction & Design	Sample Rep.	B67-ASB.73	07-Sep-16	Chrysotile	Pipeline Fitting Compound	Good	3	324/316/303/325 Area - Pipe Fitting Compound Compilation From Overhead Lines	Pipeline Fitting Compound	Low	Manage		
3	325a	Construction & Design	Sample	B67-ASB.74	07-Sep-16	No Asbestos Detected				325 Area - 1' x 1' Floor Tile White With Gray & Black Irregular Shapes	Pipeline Fitting Compound				
3	325a	Construction & Design	Sample Rep.	B67-ASB.73	07-Sep-16	Chrysotile	Pipeline Fitting Compound	Good	3	324/316/303/325 Area - Pipe Fitting Compound Compilation From Overhead Lines	Pipeline Fitting Compound	Low	Manage		
3	325b	Construction & Design	Sample Rep.	B67-ASB.73	07-Sep-16	Chrysotile	Pipeline Fitting Compound	Good	3	324/316/303/325 Area - Pipe Fitting Compound Compilation From Overhead Lines	Pipeline Fitting Compound	Low	Manage		

Civic Square East - 2016														
			SAMPLE DATA											
Room	Use	SAMPLE	Sample	Date	Asbestos	% of	Tradename			Description of	Asbestos Content	Potential for	Recommended	
Floor	Number	Use	SAMPLE REP	ID	DD/MM/YY	Type	ACM Product	Condition	Priority	Sample Location	In Area	Disturbance	Action	Comments
3	325c	Construction & Design	Sample Rep.	B67-ASB.73	07-Sep-16	Chrysotile	Pipeline Fitting Compound	Good	3	324/316/303/325 Area - Pipe Fitting Compound Compilation From Overhead Lines	Pipeline Fitting Compound	Low	Manage	
3	325d	Construction & Design	Sample Rep.	B67-ASB.73	07-Sep-16	Chrysotile	Pipeline Fitting Compound	Good	3	324/316/303/325 Area - Pipe Fitting Compound Compilation From Overhead Lines	Pipeline Fitting Compound	Low	Manage	
3	325e	Construction & Design	Sample Rep.	B67-ASB.73	07-Sep-16	Chrysotile	Pipeline Fitting Compound	Good	3	324/316/303/325 Area - Pipe Fitting Compound Compilation From Overhead Lines	Pipeline Fitting Compound	Low	Manage	
3	325f	Construction & Design	Sample Rep.	B67-ASB.73	07-Sep-16	Chrysotile	Pipeline Fitting Compound	Good	3	324/316/303/325 Area - Pipe Fitting Compound Compilation From Overhead Lines	Pipeline Fitting Compound	Low	Manage	
3	325g	Construction & Design	Sample Rep.	B67-ASB.73	07-Sep-16	Chrysotile	Pipeline Fitting Compound	Good	3	324/316/303/325 Area - Pipe Fitting Compound Compilation From Overhead Lines	Pipeline Fitting Compound	Low	Manage	
3	325h	Construction & Design	Sample Rep.	B67-ASB.73	07-Sep-16	Chrysotile	Pipeline Fitting Compound	Good	3	324/316/303/325 Area - Pipe Fitting Compound Compilation From Overhead Lines	Pipeline Fitting Compound	Low	Manage	
3	325j	Construction & Design	Sample Rep.	B67-ASB.73	07-Sep-16	Chrysotile	Pipeline Fitting Compound	Good	3	324/316/303/325 Area - Pipe Fitting Compound Compilation From Overhead Lines	Pipeline Fitting Compound	Low	Manage	
3	325k	Construction & Design	Sample Rep.	B67-ASB.73	07-Sep-16	Chrysotile	Pipeline Fitting Compound	Good	3	324/316/303/325 Area - Pipe Fitting Compound Compilation From Overhead Lines	Pipeline Fitting Compound	Low	Manage	
3	325l	Construction & Design	Sample Rep.	B67-ASB.73	07-Sep-16	Chrysotile	Pipeline Fitting Compound	Good	3	324/316/303/325 Area - Pipe Fitting Compound Compilation From Overhead Lines	Pipeline Fitting Compound	Low	Manage	
3	325m	Construction & Design	Sample Rep.	B67-ASB.73	07-Sep-16	Chrysotile	Pipeline Fitting Compound	Good	3	324/316/303/325 Area - Pipe Fitting Compound Compilation From Overhead Lines	Pipeline Fitting Compound	Low	Manage	
3	325n	Construction & Design	Sample Rep.	B67-ASB.73	07-Sep-16	Chrysotile	Pipeline Fitting Compound	Good	3	324/316/303/325 Area - Pipe Fitting Compound Compilation From Overhead Lines	Pipeline Fitting Compound	Low	Manage	
3	325p	Construction & Design	Sample Rep.	B67-ASB.73	07-Sep-16	Chrysotile	Pipeline Fitting Compound	Good	3	324/316/303/325 Area - Pipe Fitting Compound Compilation From Overhead Lines	Pipeline Fitting Compound	Low	Manage	
3	325q	Construction & Design	Sample Rep.	B67-ASB.73	07-Sep-16	Chrysotile	Pipeline Fitting Compound	Good	3	324/316/303/325 Area - Pipe Fitting Compound Compilation From Overhead Lines	Pipeline Fitting Compound	Low	Manage	

Civic Square East - 2016															
			SAMPLE DATA												
Room	Use	SAMPLE	Sample	Date	Asbestos	% of	Tradename			Description of	Asbestos Content	Potential for	Recommended		
Floor	Number	Use	SAMPLE REP	ID	DD/MM/YY	Type	ACM Product	Condition	Priority	Sample Location	In Area	Disturbance	Action	Comments	
3	325r	Construction & Design	Sample Rep.	B67-ASB.73	07-Sep-16	Chrysotile	Pipeline Fitting Compound	Good	3	324/316/303/325 Area - Pipe Fitting Compound Compilation From Overhead Lines	Pipeline Fitting Compound	Low	Manage		
3	326	Data Closet	Sample	B67-ASB.72	07-Sep-16	No Asbestos Detected				326 - 16" x 16" Floor Tile Off White With Fine Brown Lines	No Accessible ACM				
3	327										No Accessible ACM				
3	328	Touchdown Office #2	Sample	B67-ASB.71	07-Sep-16	No Asbestos Detected				328 - 2' x 4' Ceiling Tile Pin Hole/Large Pin Hole Pattern	No Accessible ACM				
3	329										No Accessible ACM				
3	330										No Accessible ACM				
3	331	Building Inspections	Sample Rep.	B67-ASB.73	07-Sep-16	Chrysotile	Pipeline Fitting Compound	Good	3	324/316/303/325 Area - Pipe Fitting Compound Compilation From Overhead Lines	Pipeline Fitting Compound	Low	Manage		
3	331a	Building Inspections	Sample Rep.	B67-ASB.73	07-Sep-16	Chrysotile	Pipeline Fitting Compound	Good	3	324/316/303/325 Area - Pipe Fitting Compound Compilation From Overhead Lines	Pipeline Fitting Compound	Low	Manage		
3	331b	Building Inspections	Sample Rep.	B67-ASB.73	07-Sep-16	Chrysotile	Pipeline Fitting Compound	Good	3	324/316/303/325 Area - Pipe Fitting Compound Compilation From Overhead Lines	Pipeline Fitting Compound	Low	Manage		
3	331c	Building Inspections	Sample Rep.	B67-ASB.73	07-Sep-16	Chrysotile	Pipeline Fitting Compound	Good	3	324/316/303/325 Area - Pipe Fitting Compound Compilation From Overhead Lines	Pipeline Fitting Compound	Low	Manage		
3	331d	Building Inspections	Sample Rep.	B67-ASB.73	07-Sep-16	Chrysotile	Pipeline Fitting Compound	Good	3	324/316/303/325 Area - Pipe Fitting Compound Compilation From Overhead Lines	Pipeline Fitting Compound	Low	Manage		
3	331e	Building Inspections	Sample Rep.	B67-ASB.73	07-Sep-16	Chrysotile	Pipeline Fitting Compound	Good	3	324/316/303/325 Area - Pipe Fitting Compound Compilation From Overhead Lines	Pipeline Fitting Compound	Low	Manage		
3	331f	Building Inspections	Sample Rep.	B67-ASB.73	07-Sep-16	Chrysotile	Pipeline Fitting Compound	Good	3	324/316/303/325 Area - Pipe Fitting Compound Compilation From Overhead Lines	Pipeline Fitting Compound	Low	Manage		
3	331g	Building Inspections	Sample Rep.	B67-ASB.73	07-Sep-16	Chrysotile	Pipeline Fitting Compound	Good	3	324/316/303/325 Area - Pipe Fitting Compound Compilation From Overhead Lines	Pipeline Fitting Compound	Low	Manage		
3	331h	Building Inspections	Sample Rep.	B67-ASB.73	07-Sep-16	Chrysotile	Pipeline Fitting Compound	Good	3	324/316/303/325 Area - Pipe Fitting Compound Compilation From Overhead Lines	Pipeline Fitting Compound	Low	Manage		
3	331j	Building Inspections	Sample Rep.	B67-ASB.73	07-Sep-16	Chrysotile	Pipeline Fitting Compound	Good	3	324/316/303/325 Area - Pipe Fitting Compound Compilation From Overhead Lines	Pipeline Fitting Compound	Low	Manage		

Civic Square East - 2016															
			SAMPLE DATA												
Room	Use	SAMPLE	Sample	Date	Asbestos	% of	Tradename			Description of	Asbestos Content	Potential for	Recommended		
Floor	Number	Use	SAMPLE REP	ID	DD/MM/YY	Type	ACM Product	Condition	Priority	Sample Location	In Area	Disturbance	Action	Comments	
3	331k	Building Inspections	Sample Rep.	B67-ASB.73	07-Sep-16	Chrysotile	Pipeline Fitting Compound	Good	3	324/316/303/325 Area - Pipe Fitting Compound Compilation From Overhead Lines	Pipeline Fitting Compound	Low	Manage		
3	331l	Building Inspections	Sample Rep.	B67-ASB.73	07-Sep-16	Chrysotile	Pipeline Fitting Compound	Good	3	324/316/303/325 Area - Pipe Fitting Compound Compilation From Overhead Lines	Pipeline Fitting Compound	Low	Manage		
3	331m	Building Inspections	Sample Rep.	B67-ASB.73	07-Sep-16	Chrysotile	Pipeline Fitting Compound	Good	3	324/316/303/325 Area - Pipe Fitting Compound Compilation From Overhead Lines	Pipeline Fitting Compound	Low	Manage		
3	331n	Building Inspections	Sample Rep.	B67-ASB.73	07-Sep-16	Chrysotile	Pipeline Fitting Compound	Good	3	324/316/303/325 Area - Pipe Fitting Compound Compilation From Overhead Lines	Pipeline Fitting Compound	Low	Manage		
3	331p	Building Inspections	Sample Rep.	B67-ASB.73	07-Sep-16	Chrysotile	Pipeline Fitting Compound	Good	3	324/316/303/325 Area - Pipe Fitting Compound Compilation From Overhead Lines	Pipeline Fitting Compound	Low	Manage		
3	331q	Building Inspections	Sample Rep.	B67-ASB.73	07-Sep-16	Chrysotile	Pipeline Fitting Compound	Good	3	324/316/303/325 Area - Pipe Fitting Compound Compilation From Overhead Lines	Pipeline Fitting Compound	Low	Manage		
3	332	Construction & Design									No Accessible ACM				
3	332a	Construction & Design									No Accessible ACM				
3	332b	Training Room #1	Sample Rep.	B67-ASB.73	07-Sep-16	Chrysotile	Pipeline Fitting Compound	Good	3	324/316/303/325 Area - Pipe Fitting Compound Compilation From Overhead Lines	Pipeline Fitting Compound	Low	Manage		
3	332a-1	Construction & Design									No Accessible ACM				
3	332a-2	Construction & Design									No Accessible ACM				
3	332a-3	Construction & Design									No Accessible ACM				
3	332a-4	Construction & Design									No Accessible ACM				
3	332a-5	Construction & Design									No Accessible ACM				
3	332a-6	Construction & Design									No Accessible ACM				
3	332c	Construction & Design									No Accessible ACM				
3	332d	Construction & Design									No Accessible ACM				
3	332e	Construction & Design									No Accessible ACM				
3	332f	Construction & Design									No Accessible ACM				
3	332g	Construction & Design									No Accessible ACM				

Civic Square East - 2016															
			SAMPLE DATA												
Room	Use	SAMPLE	Sample	Date	Asbestos	% of	Tradename			Description of	Asbestos Content	Potential for	Recommended		
Floor	Number	Use	SAMPLE REP	ID	DD/MM/YY	Type	Asbestos	ACM Product	Condition	Priority	Sample Location	In Area	Disturbance	Action	Comments
3	332h	Construction & Design										No Accessible ACM			
3	332j	Construction & Design										No Accessible ACM			
3	332k	Construction & Design										No Accessible ACM			
3	332l	Construction & Design										No Accessible ACM			
3	332m	Construction & Design										No Accessible ACM			
3	333	ITO										No Accessible ACM			
3	333a	ITO										No Accessible ACM			
3	333b	ITO										No Accessible ACM			
3	333c	ITO										No Accessible ACM			
3	333d	ITO										No Accessible ACM			
3	333e	ITO										No Accessible ACM			
3	334	Meeting Room #3.1										No Accessible ACM			
3	335a	Kitchen	Sample Rep.	B67-ASB.73	07-Sep-16	Chrysotile	75%	Pipeline Fitting Compound	Good	3	324/316/303/325 Area - Pipe Fitting Compound Compilation From Overhead Lines	Pipeline Fitting Compound	Low	Manage	
3	336	Washroom										No Accessible ACM			
3	337	Vestibule										No Accessible ACM			
3	338	Men's W/C										No Accessible ACM			
3	339	Vestibule										No Accessible ACM			
3	340	Women's W/C										No Accessible ACM			
3	341	Storage	Sample	B67-ASB.79a	07-Sep-16	No Asbestos Detected					341 - Plaster Skim Coat	Pipeline Fitting Compound			
3	341	Storage	Sample	B67-ASB.79b	07-Sep-16	No Asbestos Detected					341 - Plaster Base Coat	Pipeline Fitting Compound			
3	341	Storage	Sample	B67-ASB.80	07-Sep-16	Chrysotile	40%	Pipeline Fitting Compound	Moderate	2	341 - Pipe Fitting Compound Within Access Panel Pipe Chase	Pipeline Fitting Compound	Low	Repair/Remove	
3	342		Sample	B67-ASB.87	07-Sep-16	No Asbestos Detected					342 - Brown Sheet Flooring	No Accessible ACM			
3	343											No Accessible ACM			
3	344	Corridor	Sample Rep.	B67-ASB.73	07-Sep-16	Chrysotile	75%	Pipeline Fitting Compound	Good	3	324/316/303/325 Area - Pipe Fitting Compound Compilation From Overhead Lines	Pipeline Fitting Compound	Low	Manage	Above ceiling tile
3	345b	Lunch Area	Sample	B67-ASB.76a	07-Sep-16	No Asbestos Detected					345b - Plaster Skim Coat Compilation	No Accessible ACM			
3	345b	Lunch Area	Sample	B67-ASB.76b	07-Sep-16	No Asbestos Detected					345b - Plaster Base Coat Compilation	No Accessible ACM			

Civic Square East - 2016															
			SAMPLE DATA												
Room	Use	SAMPLE	Sample	Date	Asbestos	% of	Tradename			Description of	Asbestos Content	Potential for	Recommended		
Floor	Number	Use	SAMPLE REP	ID	DD/MM/YY	Type	ACM Product	Condition	Priority	Sample Location	In Area	Disturbance	Action	Comments	
3	346	Building Inspections	Sample Rep.	B67-ASB.73	07-Sep-16	Chrysotile	Pipeline Fitting Compound	Good	3	324/316/303/325 Area - Pipe Fitting Compound Compilation From Overhead Lines	Pipeline Fitting Compound	Low	Manage		
3	346a	Building Inspections	Sample Rep.	B67-ASB.73	07-Sep-16	Chrysotile	Pipeline Fitting Compound	Good	3	324/316/303/325 Area - Pipe Fitting Compound Compilation From Overhead Lines	Pipeline Fitting Compound	Low	Manage		
3	346b	Building Inspections	Sample Rep.	B67-ASB.73	07-Sep-16	Chrysotile	Pipeline Fitting Compound	Good	3	324/316/303/325 Area - Pipe Fitting Compound Compilation From Overhead Lines	Pipeline Fitting Compound	Low	Manage		
3	346c	Building Inspections	Sample Rep.	B67-ASB.73	07-Sep-16	Chrysotile	Pipeline Fitting Compound	Good	3	324/316/303/325 Area - Pipe Fitting Compound Compilation From Overhead Lines	Pipeline Fitting Compound	Low	Manage		
3	342	Spy Channel	Sample	B67-ASB.82	07-Sep-16	No Asbestos Detected				3rd Floor Spy Channel - Lineal Pipe Insulation	Pipeline Fitting Compound				
3	342	Spy Channel	Sample	B67-ASB.83	07-Sep-16	No Asbestos Detected				3rd Floor Spy Channel - "Peep Hole" Cover	Pipeline Fitting Compound				
3	342	Spy Channel	Sample	B67-ASB.84a	07-Sep-16	No Asbestos Detected				3rd Floor Spy Channel - Plaster Skim Coat Compilation	Pipeline Fitting Compound			Debris throughout the Spy Channel	
3	342	Spy Channel	Sample	B67-ASB.84b	07-Sep-16	No Asbestos Detected				3rd Floor Spy Channel - Plaster Base Coat Compilation	Pipeline Fitting Compound			Debris throughout the Spy Channel	
3	342	Spy Channel	Sample	B67-ASB.85	07-Sep-16	Chrysotile	Pipeline Fitting Compound	Poor/Mod	2	3rd Floor Spy Channel - Pipe Fitting Compound Compilation	Pipeline Fitting Compound	Low	Repair/Remove	All fittings within spy channel	
3	342	Spy Channel	Sample	B67-ASB.86	07-Sep-16	No Asbestos Detected				3rd Floor Spy Channel - 3' x 3' Black Floor Tile	Pipeline Fitting Compound				
3		Pipe Chase									No Accessible ACM				
3	S-1	Stairwell									No Accessible ACM				
3	S-2	Stairwell									No Accessible ACM				
3	E-1	Elevator									No Accessible ACM				
3	E-2	Elevator									No Accessible ACM				
3	E-3	Freight Elevator									No Accessible ACM				
4	4th Floor	Area	Sample	B67-ASB.90	12-Sep-16	No Asbestos Detected				4th Floor - Drywall Mud Compilation	No Accessible ACM				
4	401	Foyer									No Accessible ACM				
4	402a	Corridor	Sample	B67-ASB.92	12-Sep-16	No Asbestos Detected				402a - 2' x 4' Ceiling Tile Debris Above Suspended Ceiling Adjacent 410	No Accessible ACM				
4	402b	Corridor									No Accessible ACM				
4	402c	Corridor									No Accessible ACM				
4	403										No Accessible ACM				
4	404										No Accessible ACM				
4	405	Women's W/C									No Accessible ACM				
4	406										No Accessible ACM				
4	407	OH&S									No Accessible ACM				

Civic Square East - 2016															
			SAMPLE DATA												
Floor	Room Number	Use	SAMPLE REP	Sample ID	Date DD/MM/YY	Asbestos Type	% of Asbestos	Tradename ACM Product	Condition	Priority	Description of Sample Location	Asbestos Content In Area	Potential for Disturbance	Recommended Action	Comments
4	408	OH&S										No Accessible ACM			
4	409											No Accessible ACM			
4	410											No Accessible ACM			
4	410a											No Accessible ACM			
4	411	Labour Relations	Sample	B67-ASB.93	12-Sep-16	No Asbestos Detected					411 - Insulation Above Suspended Ceiling	No Accessible ACM			
4	411a											No Accessible ACM			
4	411b											No Accessible ACM			
4	411c											No Accessible ACM			
4	412	LR										No Accessible ACM			
4	413	Meeting Room 4.2										No Accessible ACM			
4	414	Clerks Corporate Records										No Accessible ACM			
4	414a	Clerks Corporate Records										No Accessible ACM			
4	414b	Clerks Corporate Records										No Accessible ACM			
4	415											No Accessible ACM			
4	416	E&CI										No Accessible ACM			
4	417											No Accessible ACM			
4	418	Corridor										No Accessible ACM			
4	418a	Enviro & Corporate Initiatives										No Accessible ACM			
4	418b	Enviro & Corporate Initiatives										No Accessible ACM			
4	418c	Enviro & Corporate Initiatives										No Accessible ACM			
4	419	Corridor	Sample	B67-ASB.94	12-Sep-16	No Asbestos Detected					419 Area - Small Black Lines Above Suspended Ceiling	No Accessible ACM			
4	419a	Enviro & Corporate Initiatives										No Accessible ACM			
4	419b	Enviro & Corporate Initiatives										No Accessible ACM			
4	419c	Enviro & Corporate Initiatives										No Accessible ACM			
4	419d	Enviro & Corporate Initiatives										No Accessible ACM			
4	419e	Enviro & Corporate Initiatives										No Accessible ACM			
4	419f	Enviro & Corporate Initiatives										No Accessible ACM			
4	419g	Enviro & Corporate Initiatives										No Accessible ACM			
4	419h	Enviro & Corporate Initiatives										No Accessible ACM			
4	420	Enviro & Corporate Initiatives										No Accessible ACM			
4	421	Enviro & Corporate Initiatives										No Accessible ACM			

Civic Square East - 2016															
			SAMPLE DATA												
Room	Use	SAMPLE	Sample	Date	Asbestos	% of Asbestos	Tradename	Condition	Priority	Description of	Asbestos Content	Potential for	Recommended		
Floor	Number	Use	SAMPLE REP	ID	DD/MM/YY	Type	ACM Product			Sample Location	In Area	Disturbance	Action	Comments	
4	422	Enviro & Corporate Initiatives									No Accessible ACM				
4	423	Enviro & Corporate Initiatives									No Accessible ACM				
4	424	Enviro & Corporate Initiatives									No Accessible ACM				
4	425	Enviro & Corporate Initiatives									No Accessible ACM				
4	427	Enviro & Corporate Initiatives									No Accessible ACM				
4	428	Vestibule									No Accessible ACM				
4	429		Sample	B67-ASB.95a	12-Sep-16	No Asbestos Detected				429 - Ceiling Plaster Skim Coat	No Accessible ACM			Debris all throughout the ceiling space	
4	429		Sample	B67-ASB.95b	12-Sep-16	No Asbestos Detected				429 - Ceiling Plaster Base Coat	No Accessible ACM			Debris all throughout the ceiling space	
4	430	Men's W/C									No Accessible ACM				
4	431		Sample	B67-ASB.91	12-Sep-16	No Asbestos Detected				431 - 2' x 4' Ceiling Tile Textured Small Pinhole Pattern	No Accessible ACM				
4	432	Corridor									No Accessible ACM				
4	432a	Long Range Planning									No Accessible ACM				
4	432b	Long Range Planning									No Accessible ACM				
4	432c	Long Range Planning									No Accessible ACM				
4	432d	Long Range Planning									No Accessible ACM				
4	432e	Long Range Planning									No Accessible ACM				
4	432f	Long Range Planning									No Accessible ACM				
4	432g	Long Range Planning									No Accessible ACM				
4	433	Corridor	Sample	B67-ASB.89a	12-Sep-16	No Asbestos Detected				433 - Plaster Skim Coat Compilation	No Accessible ACM			Debris above the suspended ceiling on C.T. Track, above 434 entry, above suspended ceiling at double door entry to 441, above suspended ceiling at penetration above 435 entry and above suspended ceiling and breaker box in 431.	
4	433	Corridor	Sample	B67-ASB.89b	12-Sep-16	No Asbestos Detected				433 - Plaster Base Coat Compilation	No Accessible ACM			Debris above the suspended ceiling on C.T. Track, above 434 entry, above suspended ceiling at double door entry to 441, above suspended ceiling at penetration above 435 entry and above suspended ceiling and breaker box in 431.	
4	434										No Accessible ACM				
4	435	Storage									No Accessible ACM				
4	435a										No Accessible ACM				
4	436										No Accessible ACM				
4	437	Catalog Storage & Privacy Room									No Accessible ACM				

Civic Square East - 2016															
			SAMPLE DATA												
Room	Use	SAMPLE	Sample	Date	Asbestos	% of	Tradename			Description of	Asbestos Content	Potential for	Recommended		
Floor	Number	Use	SAMPLE REP	ID	DD/MM/YY	Type	Asbestos	ACM Product	Condition	Priority	Sample Location	In Area	Disturbance	Action	Comments
4	438	Meeting Room #4.3										No Accessible ACM			
4	439											No Accessible ACM			
4	440											No Accessible ACM			
4	440a											No Accessible ACM			
4	440b											No Accessible ACM			
4	440c											No Accessible ACM			
4	440d											No Accessible ACM			
4	440e											No Accessible ACM			
4	440f											No Accessible ACM			
4	440g											No Accessible ACM			
4	440h											No Accessible ACM			
4	441	Neighbourhood Planning & Urban Design										No Accessible ACM			
4	441a	Neighbourhood Planning & Urban Design										No Accessible ACM			
4	441b	Neighbourhood Planning & Urban Design										No Accessible ACM			
4	441c	Neighbourhood Planning & Urban Design										No Accessible ACM			
4	441d	Neighbourhood Planning & Urban Design										No Accessible ACM			
4	441e	Neighbourhood Planning & Urban Design										No Accessible ACM			
4	442	Kitchen										No Accessible ACM			
4	443											No Accessible ACM			
4		Pipe Chase										No Accessible ACM			
4	S-1	Stairwell										No Accessible ACM			
4	S-2	Stairwell										No Accessible ACM			
4	E-1	Elevator										No Accessible ACM			
4	E-2	Elevator										No Accessible ACM			
4	E-3	Freight Elevator										No Accessible ACM			
R		Freight Elevator Penthouse	Sample	B67-ASB.109	25-Sep-16	No Asbestos Detected					Freight Elevator Penthouse - Small Pipe Fitting Compound Adj. Motors	Pipeline Fitting Compound, Plaster, Duct Insulation			
R		Freight Elevator Penthouse	Sample	B67-ASB.110	25-Sep-16	Chrysotile	60%	Pipeline Fitting Compound	Mod/Good	3	Freight Elevator Penthouse - Large Pipe Fitting Compound Adj. Motors	Pipeline Fitting Compound, Plaster, Duct Insulation			
R		Freight Elevator Penthouse	Sample	B67-ASB.111	25-Sep-16	No Asbestos Detected					Freight Elevator Penthouse - Expansion Gasket Material	Pipeline Fitting Compound, Plaster, Duct Insulation			

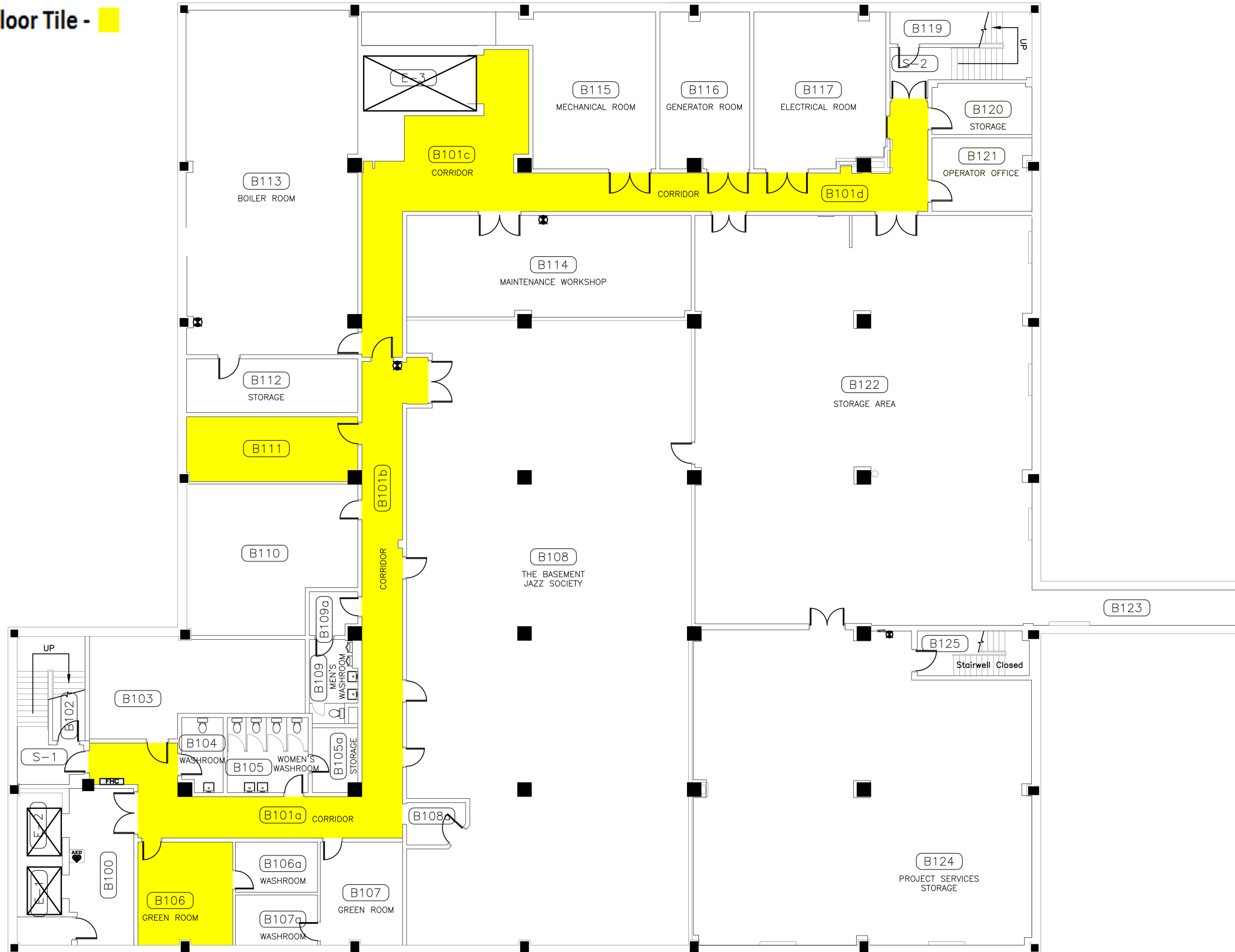
Civic Square East - 2016															
			SAMPLE DATA												
Room	Use	SAMPLE	Sample	Date	Asbestos	% of	Tradename			Description of	Asbestos Content	Potential for	Recommended		
Floor	Number	Use	SAMPLE REP	ID	DD/MM/YY	Type	ACM Product	Condition	Priority	Sample Location	In Area	Disturbance	Action	Comments	
R		Freight Elevator Penthouse	Sample	B67-ASB.112	25-Sep-16	Chrysotile	Plaster	Moderate	2	Freight Elevator Penthouse - Wall Plaster - Stairwell	Pipeline Fitting Compound, Plaster, Duct Insulation	Low/Mod	Cleanup/Manage/Repair	Debris throughout stairwell	
R		Freight Elevator Penthouse	Sample Rep.	B67-ASB.96	12-Sep-16	Chrysotile	Pipeline Fitting Compound	Moderate	3	Main Floor Vestibule - Pipe Fitting Compound Above Suspended Ceiling	Pipeline Fitting Compound, Plaster, Duct Insulation	Low	Manage	On 1st and 2nd levels of this penthouse	
R		Freight Elevator Penthouse	Sample Rep.	B67-ASB.104	12-Sep-16	Chrysotile	Duct Insulation	Poor/Mod	1	Roof West Penthouse - Duct Insulation Compound	Pipeline Fitting Compound, Plaster, Duct Insulation	Low/Mod	Repair/Remove	Remove/Repair damaged areas on duct insulation on 2nd level(in stairwell) Repair the duct taped fitting adj. pipe chase entry	
R		East Penthouse	Sample	B67-ASB.97	12-Sep-16	Chrysotile	Pipeline Fitting Compound	Good	3	Roof East Penthouse - Pipe Fitting Compound Small Line	Pipeline Fitting Compound	Low	Manage		
R		East Penthouse	Sample	B67-ASB.98	12-Sep-16	Chrysotile	Pipeline Fitting Compound	Good	3	Roof East Penthouse - Pipe Fitting Compound Medium Line	Pipeline Fitting Compound	Low	Manage		
R		West Penthouse	Sample	B67-ASB.103	12-Sep-16	No Asbestos Detected				Roof West Penthouse - Expansion Gasket Material	Duct Insulation, Pipe Fitting Compound				
R		West Penthouse	Sample	B67-ASB.104	12-Sep-16	Chrysotile	Duct Insulation	Good	3	Roof West Penthouse - Duct Insulation Compound	Duct Insulation, Pipe Fitting Compound	Low	Manage		
R		West Penthouse	Sample Rep.	B67-ASB.98	12-Sep-16	Chrysotile	Pipeline Fitting Compound	Good	3	Roof East Penthouse - Pipe Fitting Compound Medium Line	Duct Insulation, Pipe Fitting Compound	Low	Manage		
E	Exterior		Sample Rep.	B67-ASB.96	12-Sep-16	Chrysotile	Pipeline Fitting Compound	Moderate	3	Main Floor Vestibule - Pipe Fitting Compound Above Suspended Ceiling	Pipeline Fitting Compound	Low	Manage	Second door closest to loading dock yellow bin	

APPENDIX III

FLOOR PLANS

Legend

Vinyl Asbestos Floor Tile -



NOTE:
THESE DRAWINGS HAVE BEEN PREPARED BASED ON INFORMATION PROVIDED BY OTHERS. THE CITY HAS TAKEN STEPS TO VERIFY THE ACCURACY AND/OR COMPLETENESS OF THIS INFORMATION BUT SHALL NOT BE RESPONSIBLE FOR AND ERRORS OR OMISSIONS THAT MAY BE INCORPORATED AS A RESULT OF ERRONEOUS INFORMATION PROVIDED BY OTHERS THAT WAS NOT ABLE TO BE VISUALLY CONFIRMED.

- GENERAL NOTES:
1. ALL DIMENSIONS ARE IN MILLIMETRES
 2. DRAWINGS ARE NOT TO BE SCALED.
 3. ALL DRAWINGS TO BE READ IN CONJUNCTION WITH THE SPECIFICATIONS UNLESS OTHERWISE NOTED.
 4. VERIFY SITE CONDITIONS, DIMENSIONS AND LOCATION OF ALL UTILITIES PRIOR TO THE START OF CONSTRUCTION.
 5. REPORT ALL DISCREPANCIES TO THE CONSULTANT.

REV	ISSUED FOR	DATE

DESIGNED BY:	DRAWN BY:	CHECKED BY:	REQUESTED BY:
	MSB		

SCALE:	DATE:
1:200	05/10/2015

SHEET NAME
Basement Floor Plan

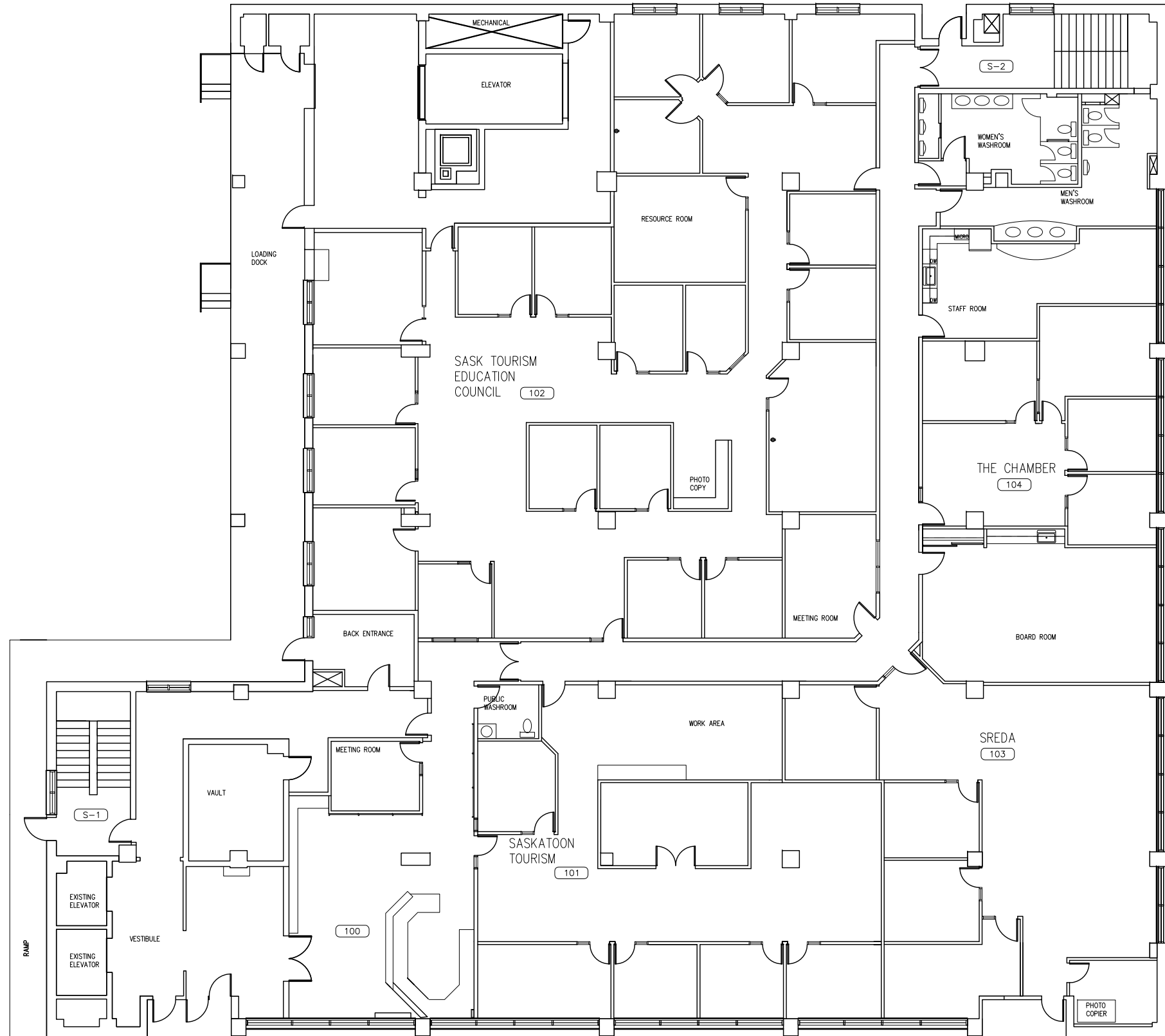
PROJECT TITLE
528 Civic Square East

PROJECT NO.	SHEET

REV. NO.

NOTE:
THESE DRAWINGS HAVE BEEN PREPARED
BASED ON INFORMATION PROVIDED BY
OTHERS. THE CITY HAS TAKEN STEPS
TO VERIFY THE ACCURACY AND/OR
COMPLETENESS OF THIS INFORMATION
BUT SHALL NOT BE RESPONSIBLE FOR
AND ERRORS OR OMISSIONS THAT
MAY BE INCORPORATED AS A RESULT
OF ERRONEOUS INFORMATION PROVIDED
BY OTHERS THAT WAS NOT ABLE TO BE
VISUALLY CONFIRMED.

- GENERAL NOTES:
1. ALL DIMENSIONS ARE IN MILLIMETRES
 2. DRAWINGS ARE NOT TO BE SCALED.
 3. ALL DRAWINGS TO BE READ IN CON-
JUNCTION WITH THE SPECIFICATIONS
UNLESS OTHERWISE NOTED.
 4. VERIFY SITE CONDITIONS, DIMENSIONS
AND LOCATION OF ALL UTILITIES PRIOR
TO THE START OF CONSTRUCTION.
 5. REPORT ALL DISCREPANCIES TO THE
CONSULTANT.



REV	ISSUED FOR	DATE

DESIGNED BY:	DRAWN BY:	CHECKED BY:	REQUESTED BY:
	MSB		
SCALE:	DATE:		
1:200	25/03/2014		

SHEET NAME
**Main Floor
Floor Plan**

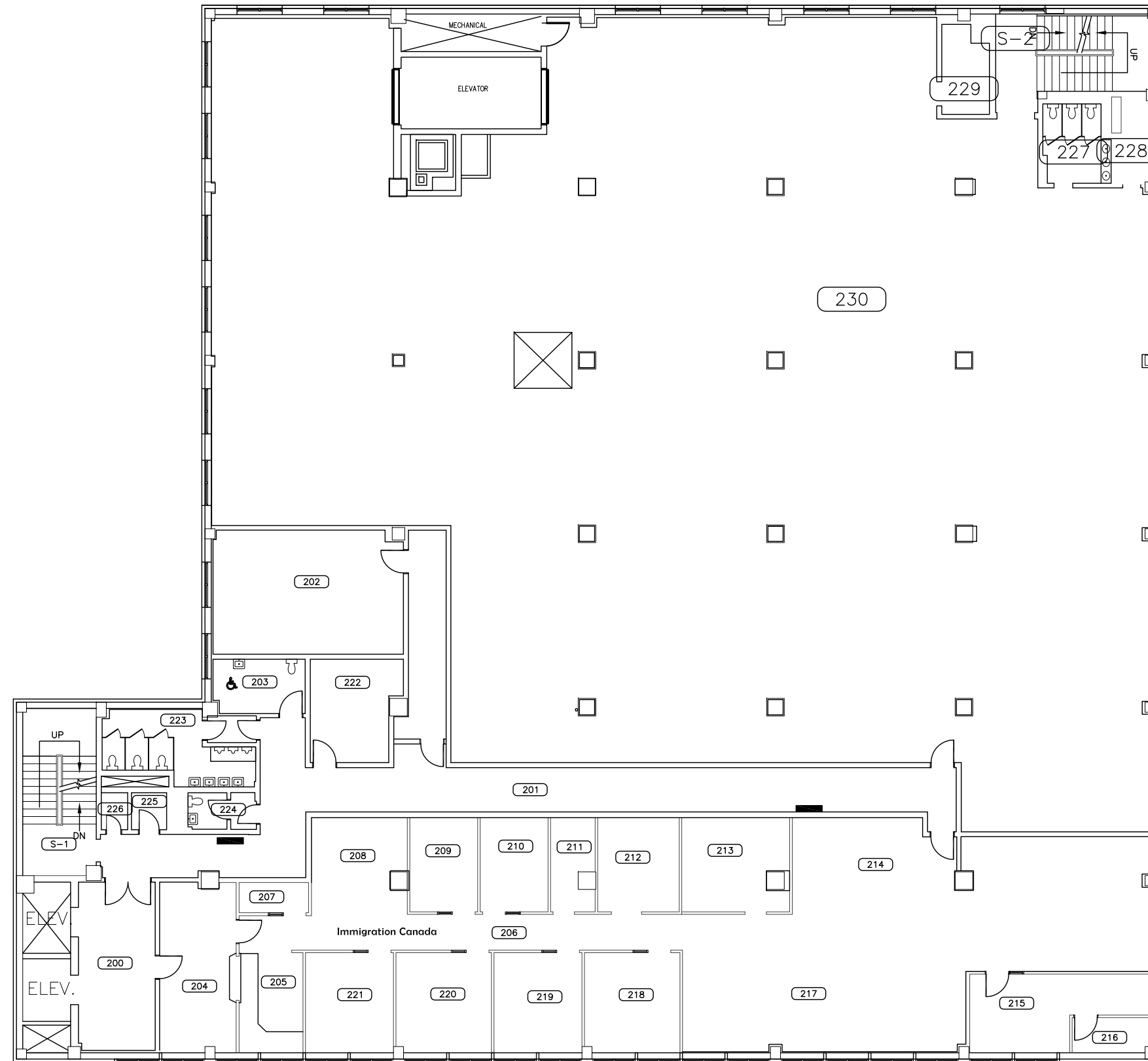
PROJECT TITLE
**528
Civic Square
East**

PROJECT NO.	SHEET
REV. NO.	



NOTE:
THESE DRAWINGS HAVE BEEN PREPARED
BASED ON INFORMATION PROVIDED BY
OTHERS. THE CITY HAS TAKEN STEPS
TO VERIFY THE ACCURACY AND/OR
COMPLETENESS OF THIS INFORMATION
BUT SHALL NOT BE RESPONSIBLE FOR
AND ERRORS OR OMISSIONS THAT
MAY BE INCORPORATED AS A RESULT
OF ERRONEOUS INFORMATION PROVIDED
BY OTHERS THAT WAS NOT ABLE TO BE
VISUALLY CONFIRMED.

- GENERAL NOTES:
1. ALL DIMENSIONS ARE IN MILLIMETRES
 2. DRAWINGS ARE NOT TO BE SCALED.
 3. ALL DRAWINGS TO BE READ IN CON-
JUNCTION WITH THE SPECIFICATIONS
UNLESS OTHERWISE NOTED.
 4. VERIFY SITE CONDITIONS, DIMENSIONS
AND LOCATION OF ALL UTILITIES PRIOR
TO THE START OF CONSTRUCTION.
 5. REPORT ALL DISCREPANCIES TO THE
CONSULTANT.



REV	ISSUED FOR	DATE

DESIGNED BY:	DRAWN BY:	CHECKED BY:	REQUESTED BY:
	MSB		

SCALE:	DATE:
1:200	17/11/2014

SHEET NAME
**Second Floor
Furniture Plan**

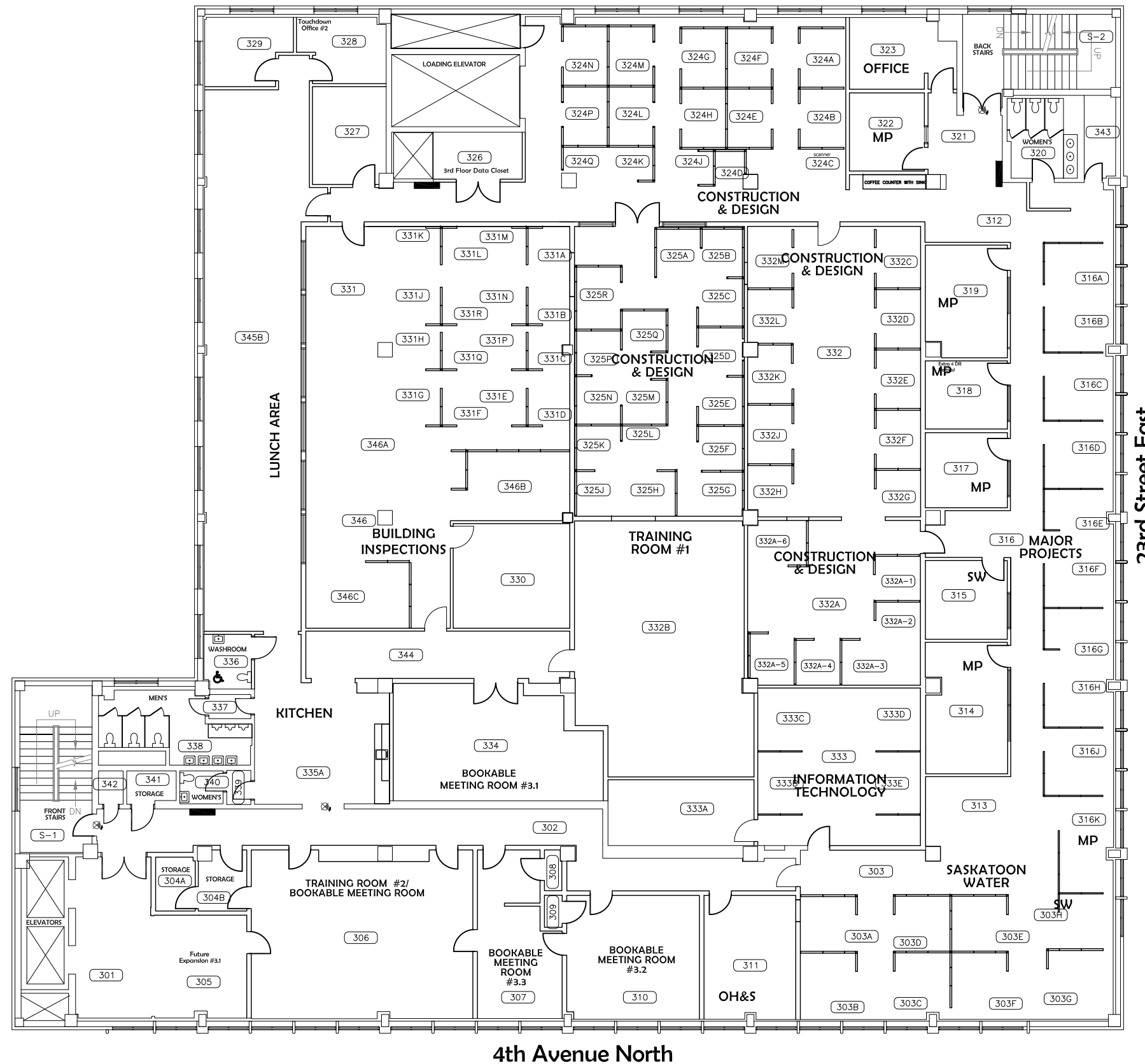
PROJECT TITLE
**528
Civic Square
East**

PROJECT NO.	SHEET

REV. NO.

NOTE:
THESE DRAWINGS HAVE BEEN PREPARED
BASED ON INFORMATION PROVIDED BY
OTHERS. THE CITY HAS TAKEN STEPS
TO VERIFY THE ACCURACY AND/OR
COMPLETENESS OF THIS INFORMATION
BUT SHALL NOT BE RESPONSIBLE FOR
AND ERRORS OR OMISSIONS THAT
MAY BE INCORPORATED AS A RESULT
OF ERRONEOUS INFORMATION PROVIDED
BY OTHERS THAT WAS NOT ABLE TO BE
VISUALLY CONFIRMED.

- GENERAL NOTES:
1. ALL DIMENSIONS ARE IN MILLIMETRES
 2. DRAWINGS ARE NOT TO BE SCALED.
 3. ALL DRAWINGS TO BE READ IN CON-
JUNCTION WITH THE SPECIFICATIONS
UNLESS OTHERWISE NOTED.
 4. VERIFY SITE CONDITIONS, DIMENSIONS
AND LOCATION OF ALL UTILITIES PRIOR
TO THE START OF CONSTRUCTION.
 5. REPORT ALL DISCREPANCIES TO THE
CONSULTANT.



REV	ISSUED FOR	DATE

DESIGNED BY:	DRAWN BY:	CHECKED BY:	REQUESTED BY:
	MSB		
SCALE:	DATE:		
1:200	02/12/2014		

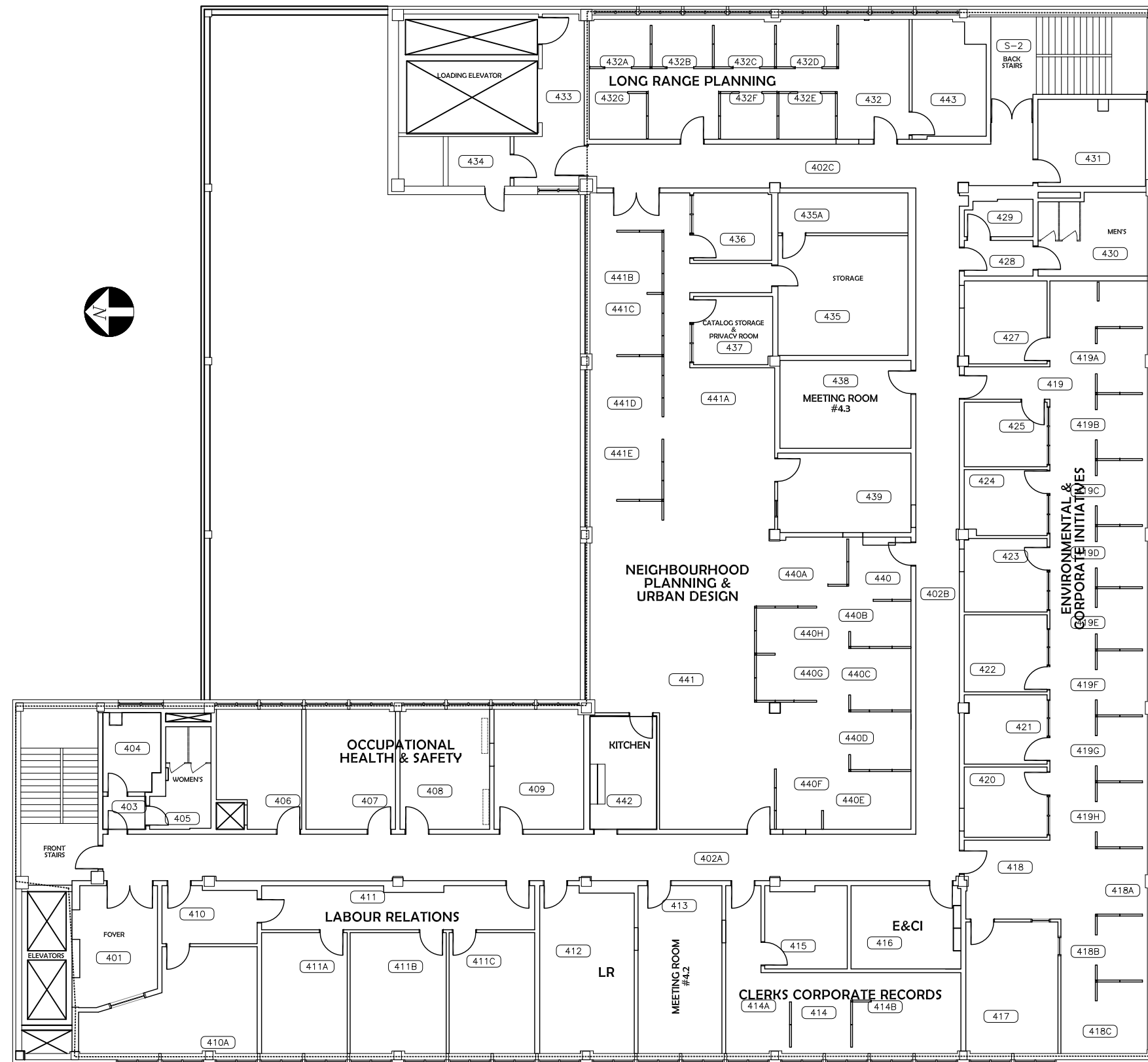
SHEET NAME
**Third Floor
Base Plan**

PROJECT TITLE
**528
Civic Square
East**

PROJECT NO.	SHEET
	REV. NO.

NOTE:
THESE DRAWINGS HAVE BEEN PREPARED
BASED ON INFORMATION PROVIDED BY
OTHERS. THE CITY HAS TAKEN STEPS
TO VERIFY THE ACCURACY AND/OR
COMPLETENESS OF THIS INFORMATION
BUT SHALL NOT BE RESPONSIBLE FOR
AND ERRORS OR OMISSIONS THAT
MAY BE INCORPORATED AS A RESULT
OF ERRONEOUS INFORMATION PROVIDED
BY OTHERS THAT WAS NOT ABLE TO BE
VISUALLY CONFIRMED.

- GENERAL NOTES:
1. ALL DIMENSIONS ARE IN MILLIMETRES
 2. DRAWINGS ARE NOT TO BE SCALED.
 3. ALL DRAWINGS TO BE READ IN CON-
JUNCTION WITH THE SPECIFICATIONS
UNLESS OTHERWISE NOTED.
 4. VERIFY SITE CONDITIONS, DIMENSIONS
AND LOCATION OF ALL UTILITIES PRIOR
TO THE START OF CONSTRUCTION.
 5. REPORT ALL DISCREPANCIES TO THE
CONSULTANT.



REV	ISSUED FOR	DATE

DESIGNED BY:	DRAWN BY:	CHECKED BY:	REQUESTED BY:
	MSB		

SCALE:	DATE:
1:200	02/12/2014

SHEET NAME
**Fourth Floor
Base Plan**

PROJECT TITLE
**528
Civic Square
East**

PROJECT NO.	SHEET

REV. NO.

APPENDIX IV

**ASBESTOS BUILDING
MATERIALS LEGEND**

Bersch & Associates Ltd.

Asbestos Identification Program

AT	Acoustical Ceiling Tile
CB	Cement Board
CP	Cement Pipe
CT	Counter Top
DC	Drywall Taping Compound
FH	Fume Hood
FS	Firestop
FD	Fire Damper
GT	Gasket
HD	Heat Deflector
MI	Mechanical Duct Insulation
PF	Pipeline Fittings
LP	Lineal Pipe Insulation
PL	Plaster
SF	Spray-Applied Fireproofing
TC	Textured Ceiling
TW	Thermal Wrap / Tape
VF	Vinyl Sheet Floor
VT	Vinyl Asbestos Floor Tile
VM	Vermiculite
VI	Vessel / Boiler / Tank Insulation

Bersch & Associates Ltd.
Asbestos ID Program



--	--

--	--

Other: _____

December 7, 2021

City of Saskatoon
3130 Laurier Drive
Saskatoon, SK
S7L 5J7

ATTENTION: Blaine Knoblauch

Bulk Sample Analysis Report - Civic Square East

Please see the laboratory results below for the bulk samples collected on December 6, 2021, from Civic Square East, Saskatoon, SK. The samples were analyzed for the identification of asbestos. Asbestos **was not** detected within the samples.

The results were obtained by examination in accordance with the current USEPA 600/R-93/116 Method for the analysis of asbestos in building materials using polarized light microscopy and dispersion staining techniques. The detection limit of this method is listed as less than 1% by volume.

Occupational Health and Safety, 1996 – Section 330 b.1 “asbestos-containing material means: (.i) vermiculite determined to contain any asbestos when tested according to an approved method”.

This test report relates only to the materials sent for examination and any use or extension of the information by the client of these results is the responsibility of the client. If any questions arise, please contact our office at (306) 978-6665. Thank you for this opportunity of service.

Sincerely,



Dawson Paynter
Bersch Consulting Ltd.
B67BLL06K - CSE



Brad Berschiminsky
Bersch Consulting Ltd.

Bulk Sample Analysis Report

December 7, 2021

Project Number: B67.21

Client: City of Saskatoon

Contact: Blaine Knoblauch

Location: Civic Square East

File Number: B67BLL06K

Sample #	Sample Date	Sample Material	Sample Location and Information	Asbestos	%	Analyst
1a	2021/12/06	Plaster	Civic Square East 3 rd Floor Men's Washroom Walls Skim Coat	No Asbestos Detected		EMSL/WB
1b	2021/12/06	Plaster	Civic Square East 3 rd Floor Men's Washroom Walls Base Coat	No Asbestos Detected		EMSL/WB
2a	2021/12/06	Plaster	Civic Square East 3 rd Floor Men's Washroom Ceiling Skim Coat	No Asbestos Detected		EMSL/WB
2b	2021/12/06	Plaster	Civic Square East 3 rd Floor Men's Washroom Ceiling Base Coat	No Asbestos Detected		EMSL/WB
3	2021/12/06	Parging	Civic Square East 3 rd Floor Men's Washroom Ceiling Behind Plaster Layers Along Metal Mesh	No Asbestos Detected		EMSL/WB

Note: The results were obtained by examination in accordance with the current USEPA 600/R-93/116 Method for the analysis of asbestos in building materials using polarized light microscopy and dispersion staining techniques. The detection limit of this method is listed as less than 1% by volume.

Sample #	Sample Date	Sample Material	Sample Location and Information	Asbestos	%	Analyst
4	2021/12/06	Fiber Board	Civic Square East 3 rd Floor Men's Washroom Wall Penetration Near Ceiling Surface at Conduit	No Asbestos Detected		EMSL/WB

Note: The results were obtained by examination in accordance with the current USEPA 600/R-93/116 Method for the analysis of asbestos in building materials using polarized light microscopy and dispersion staining techniques. The detection limit of this method is listed as less than 1% by volume.

PRE-RENOVATION ASSESSMENT

June 22, 2020

Client: City of Saskatoon
3130 Laurier Drive
Saskatoon, SK S7L 5J7

Attention: Bruce Wilson

File Number: B42PRE25J

Subject: CSE Window Replacement - Sampling / Assessment

Brad Berschiminsky of Bersch Consulting Ltd. conducted the site assessment on May 25, 2020 at the Civic Square East Building located at 202 4th Avenue North in Saskatoon, SK. The scope of work involved sampling for the analysis and detection of asbestos containing materials that may potentially be impacted by this project. Three (3) bulk samples were collected and analyzed for the identification of asbestos. Asbestos was detected within two of the samples.

The results for the bulk samples collected were obtained by examination in accordance with the current USEPA 600/R-93/116 Method for the analysis of asbestos in building materials using polarized light microscopy and dispersion staining techniques. The detection limit of this method is listed as less than 1% by volume.

Site Observations and Information

A. Asbestos Containing Materials

The exterior windows on the 3rd floor were examined throughout the Civic Square East Building with the intent of identifying the Asbestos Containing Material (ACM) that may be present.

- a) **345 Staff Lounge** - The caulking between the window frame and the brick is deemed as containing asbestos. Refer to **Sample 1** of the Bulk Analysis in Appendix I.
- b) **316 Office Area** - The caulking between the window frame and the stone is deemed as containing asbestos. Refer to **Sample 3** of the Bulk Analysis in Appendix I.
- c) **Window Mullions** – The area behind a window mullion was observed and determined to be fiberglass insulation. This area does not contain asbestos material. Refer to **Photo 4** in **Appendix II Site Photos**.

As a result of the site investigation there are asbestos concerns regarding the replacement of the exterior windows. The removal of the caulking is considered a low risk asbestos process.

As per the Occupational Health & Safety Regulations if the material identified as asbestos containing will potentially be disturbed during the renovation activity, the material will require removal prior to the activity.

Please reference to **Appendix I** for the **Bulk Sample Analysis** and **Appendix II** for the **Site Photos**.

If any questions arise on the results of this information, please contact me 306.222.7477. Thank you for this opportunity of service!

Sincerely,



Brad Berschiminsky

BERSCH CONSULTING LTD.

B67PRE25J – CSE window

Appendix I

Bulk Sample Analysis

Bulk Sample Analysis Report

June 22, 2020

Project Number: B67.20

Client: City of Saskatoon

Contact: Bruce Wilson

Location: Civic Square East, 204 4th Avenue North, Saskatoon, SK

File Number: B67BAE25J

Sample Number	Sample Date	Sample Material	Sample Location and Information	Asbestos	%	Analyst
1	2020/05/25	Caulking	345 Staff Lounge Exterior Caulking Between the Window Frame and Brick	Chrysotile	4 %	EMSL/WB
2	2020/05/25	Mortar	345 Staff Lounge Exterior Brick Mortar	No Asbestos Detected		EMSL/WB
3	2020/05/25	Caulking	316 Office Area Exterior Caulking Between the Window Frame and the Stone	Chrysotile	2 %	EMSL/WB

Note: The results for the samples submitted were obtained by examination in accordance with the current USEPA 600/R-93/116 Method for the analysis of asbestos in building materials using polarized light microscopy and dispersion staining techniques. The detection limit of this method is listed as less than 1% by volume.

Appendix II

Site Photos

Photo ID

B67PRE25J - 001

Sample Number

B67BAE25J – 1

Asbestos Containing

Description

345 Staff Lounge Exterior

Caulking Between Window
Frame and Brick.

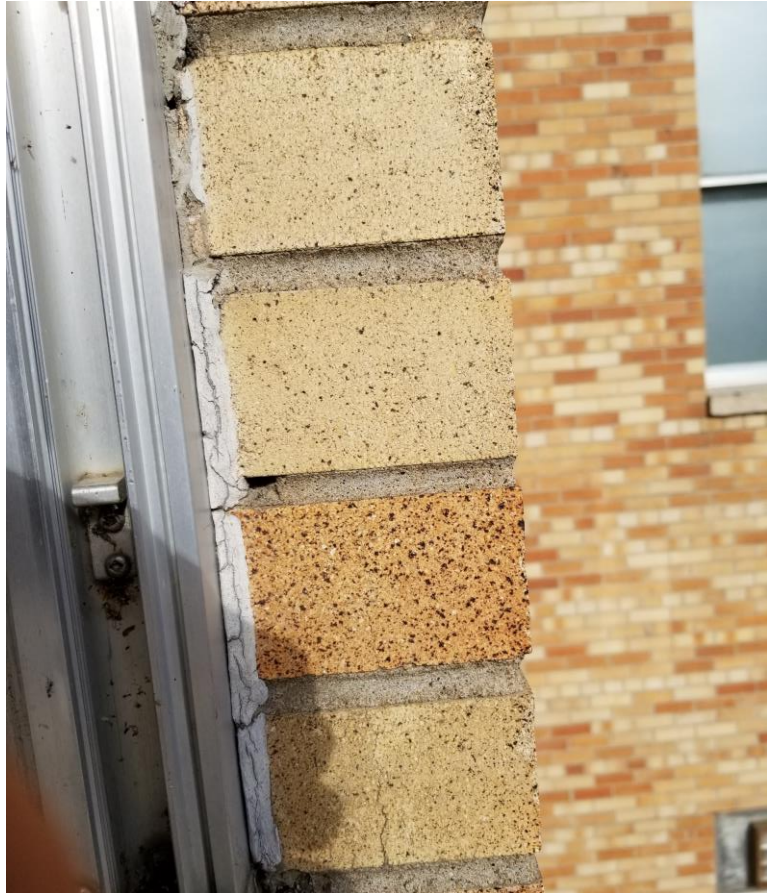


Photo ID

B67PRE25J - 002

Sample Number

B67BAE25J – 2

Non Asbestos Containing

Description

345 Staff Lounge Exterior

Exterior Brick Mortar.



Photo ID

B67PRE25J - 003

Sample Number

B67BAE25J - 3

Asbestos Containing

Description

316 Office Area Exterior

Caulking Between Window
Frame and Stone.



Photo ID

B67PRE25J - 004

Sample Number

N/A

Non Asbestos Containing

Description

Insulation Behind the Window
Mullions.



PRE-RENOVATION ASSESSMENT

May 26, 2020

Client: City of Saskatoon
222 3rd Avenue North
Saskatoon,
Saskatchewan
S7K 0J5

Attention: Cris Figueroa

File Number: B67PRE21J

Subject: Pre-Renovation Assessment – Washroom 430

Brad Berschiminsky of Bersch Consulting Ltd. conducted a site visit on May 21, 2020 to the Civic Square East Facility located at 202 4th Avenue North, Saskatoon, Saskatchewan. The purpose of the visit was to investigate and collect bulk samples to determine the presence/absence of asbestos prior to the washroom renovation. Five (5) bulk samples were collected and analyzed for the identification of asbestos. Asbestos **was** detected within one of the samples.

The results for the bulk samples collected were obtained by examination in accordance with the current USEPA 600/R-93/116 Method for the analysis of asbestos in building materials using polarized light microscopy and dispersion staining techniques. The detection limit of this method is listed as less than 1% by volume. This test report relates only to the materials sent for examination and any use or extension of the information by the client of these results is the responsibility of the client. Please reference to ***Appendix I*** for the ***Bulk Sample Analysis***.

Site Observations and Information

A. Asbestos Containing Materials

The 430 Washroom was surveyed with the intent of identifying the Asbestos Containing Material (ACM) within the building prior to the renovation.

- a) The ceiling white skim coat and grey base coat was identified as containing asbestos. Refer to Sample 3 of the Bulk Analysis in Appendix I. Vermiculite was detected within the material of which Amphibole asbestos – Actinolite was present.

Occupational Health and Safety, 1996 – Section 330 b.1 “asbestos-containing material means: (.i) vermiculite determined to contain **any** asbestos when tested according to an approved method”

- b) All other samples collected resulted in no asbestos detected


As a result of the site investigation there are asbestos concerns regarding the renovation to the washroom.

As per the Occupational Health & Safety Regulations if the material identified as asbestos containing will potentially be disturbed during the renovation activity, the material will require removal prior to the activity. Drilling or screwing into the parging is considered a low risk process when utilizing a shroud attached to a HEPA vacuum. Workers are required to use low risk PPE to perform a low risk asbestos process.

Please reference to **Appendix I** for the **Bulk Sample Analysis** and **Appendix II** for the **Site Photos**.

If any questions arise on the results of this information, please contact me 306.222.7477. Thank you for this opportunity of service!

Sincerely,



Brad Berschminsky

BERSCH CONSULTING LTD.

B67PRE21J – 430 cse

Appendix I

Bulk Sample Analysis

Bulk Sample Analysis Report

May 26, 2020

Project Number: B67.20

Client: City of Saskatoon

Contact: Cris Figueroa

Location: Civic Square East, 204 4th Avenue North, Saskatoon, SK

File Number: B67BAE21J

Sample Number	Sample Date	Sample Material	Sample Location and Information	Asbestos	%	Analyst
1	2020/05/21	Floor	430 Washroom Compilation in 2 Locations of Terrazzo Floor and Concrete Slab in Front of the Urinals	No Asbestos Detected		EMSL/WB
2	2020/05/21	Mortar	430 Washroom Compilation of 1" X 1" Ceramic Floor Tile White Mortar at the base of the Urinals	No Asbestos Detected		EMSL/WB
3	2020/05/21	Vermiculite	430 Washroom Compilation of the Ceiling Skim and Base Coat Parging Around the Exhaust Grille *Vermiculite Detected in Sample*	Actinolite	< 1%	EMSL/WB
4	2020/05/21	Grout	430 Washroom White Grout on Brown Ceramic Wall Tiles	No Asbestos Detected		EMSL/WB
5	2020/05/21	Parging	430 Washroom Compilation of Wall Parging	No Asbestos Detected		EMSL/WB

Note: The results for the samples submitted were obtained by examination in accordance with the current USEPA 600/R-93/116 Method for the analysis of asbestos in building materials using polarized light microscopy and dispersion staining techniques. The detection limit of this method is listed as less than 1% by volume.

Appendix II

Site Photos

Photo ID

B67PRE21J - 001

Sample Number

B67BAE21J - 1

Non Asbestos Containing

Description

Room 430 – Men’s Washroom

Terrazzo Floor and Concrete
Slab in Front of the Urinals.



Photo ID

B67PRE21J - 002

Sample Number

B67BAE21J - 2

Non Asbestos Containing

Description

Room 430 – Men’s Washroom

1” X 1” Ceramic Floor Tile White
Mortar at the base of the
Urinals.



Photo ID

B67PRE21J - 003

Sample Number

B67BAE21J – 3

Asbestos Containing

Description

Room 430 – Men’s Washroom

Ceiling Skim and Base Coat
Parging Around the Exhaust
Grille.



Photo ID

B67PRE21J - 004

Sample Number

B67BAE21J – 4

Non Asbestos Containing

Description

Room 430 – Men’s Washroom

White Grout on Brown Ceramic
Wall Tiles.



Photo ID

B67PRE21J - 005

Sample Number

B67BAE21J – 5

Non Asbestos Containing

Description

Room 430 – Men’s Washroom.

Compilation of Wall Parging



Photo ID

B67PRE21J – 006

Sample Number

N / A

Description

Room 430 – Men’s Washroom.

East Wall



Photo ID

B67PRE21J - 007

Sample Number

N / A

Description

Room 430 – Men’s Washroom.

North Wall



Photo ID

B67PRE21J - 008

Sample Number

N / A

Description

Room 430 – Men’s Washroom.

Northeast

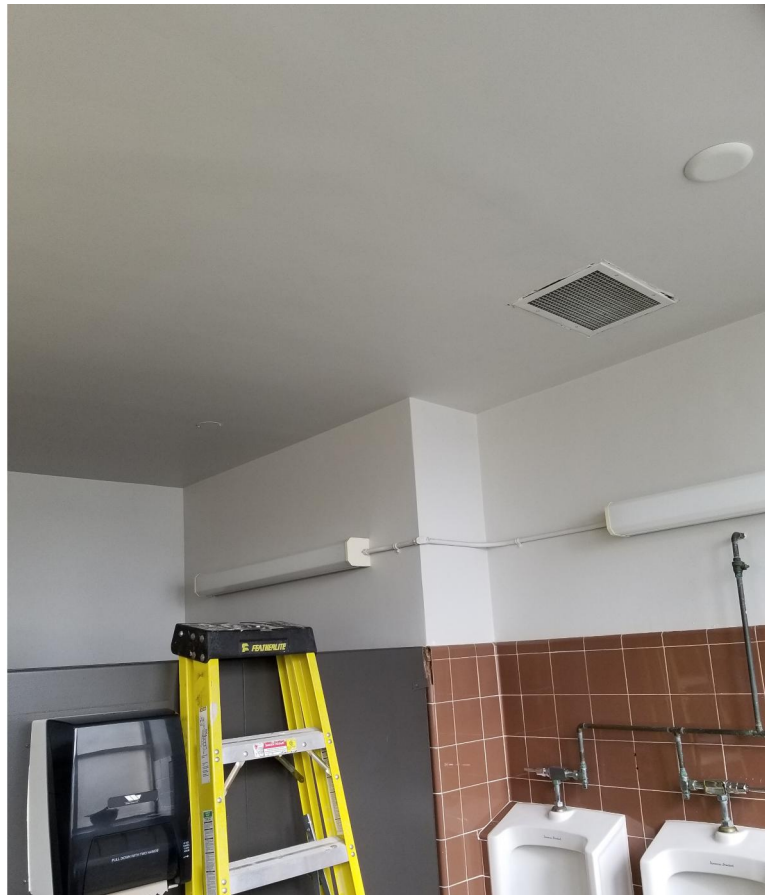


Photo ID

B67PRE21J - 009

Sample Number

N / A

Description

Room 430 – Men’s Washroom.

West Wall



BERSCH

CONSULTING LTD.

PRE-RENOVATION ASSESSMENT

July 5, 2017

CLIENT: City of Saskatoon
222 3rd Avenue North
Saskatoon, SK
S7K 0J5

ATTENTION: Cris Figueroa

PROJECT: Civic Square East- – 202 4th Avenue North

FILE NUMBER: B67PRG05G

Evan Westad of Bersch Consulting Ltd. conducted a site visit on July 5, 2017 to Civic Square East located at 202 4th Avenue North, Saskatoon, Saskatchewan. The purpose of the visit was to investigate and collect bulk samples to determine the presence/absence of asbestos. Five (5) bulk samples were collected and analyzed for the identification of asbestos. Asbestos was detected within the sample.

The results for the bulk samples were obtained by examination in accordance with the current USEPA 600/R-93/116 Method for the analysis of asbestos in building materials using polarized light microscopy and dispersion staining techniques. The detection limit of this method is listed as less than 1% by volume. This test report relates only to the materials sent for examination and any use or extension of the information by the client of these results is the responsibility of the client. Please reference Appendix I for the bulk analysis results.

SITE OBSERVATION AND INFORMATION:

- 1) Initial testing of the concrete wall in the wood working shop to consist of 2% chrysotile. This sample was obtained by coring into the wall from the woodworking shop. Wall composition appears to be a smooth concrete surface coated with a paint and primer. Behind this concrete wall lies a void before the backside of the adjacent concrete wall. Bersch consulting decided further testing was required to obtain a better understanding of which substances were containing the asbestos.
- 2) The follow up testing involved coring into the wall on both sides in order to obtain composition samples from concrete on both sides. As well as concrete the surface coating which consisted of a paint and primer were scraped and analyzed. After further analysis it has been determined that both the paint and primer as well as the concrete layers contain asbestos.

Based on the test results the door installation between the CSE basement carpentry shop and the Jazz Club does involve asbestos and will need to be treated as an asbestos process.

If any questions arise on the results of the attached information, please contact me at 306.222.7477 or our office at 306.978.6665. Thank you for this opportunity of service.

Sincerely,



Evan Westad
Bersch Consulting Ltd.
File No.: B67PRG05G – Civic Square East

APPENDIX I

BULK SAMPLE ANALYSIS

Bersch Consulting Ltd.244-2002 Quebec Avenue
Saskatoon, SK S7K 1W4

B67BAG05G

BULK SAMPLE ANALYSIS REPORT**PROJECT NO: B67.17**
CLIENT: CITY OF SASKATOON
CONTACT: CRIS FIGUEROA
LOCATION: CIVIC SQUARE EAST

NO.	DATE	SAMPLE INFORMATION	ASBESTOS	%	ANALYST
1	5-Jul-17	Carpentry Shop- Concrete	Chrysotile	2%	EMSL
2	12-Jul-17	Carpentry Shop- Concrete	Chrysotile	2%	EMSL
3	12-Jul-17	Carpentry Shop- Paint/ Primer	Chrysotile	2%	EMSL
4	12-Jul-17	Jazz Club- Concrete	Chrysotile	2%	EMSL
5	12-Jul-17	Jazz Club- Paint/ Primer	Chrysotile	2%	EMSL

BERSCH

CONSULTING LTD.

PRE-RENOVATION ASSESSMENT

June 13, 2017

CLIENT: City of Saskatoon
3130 Laurier Drive
Saskatoon, SK
S7L 5J7

ATTENTION: Karen Sinclair

PROJECT INFO: Civic Square East – 202 4th Avenue North – Room 334 Investigation

FILE NUMBER: B67PRAF07G

Brad Berschiminsky and Mitch Webber of Bersch Consulting Ltd. conducted a site visit on June 7, 2017, at Civic Square East located at 202 4th Avenue North, Saskatoon, Saskatchewan. The purpose of the visit was to investigate and collect bulk samples to determine the presence/absence of asbestos in room 334 located on the third floor. One (1) bulk sample, compiled from three walls, was collected and analyzed for the identification of asbestos. Asbestos was not detected within the sample.

The results for the bulk sample was obtained by examination in accordance with the current USEPA 600/R-93/116 Method for the analysis of asbestos in building materials using polarized light microscopy and dispersion staining techniques. The detection limit of this method is listed as less than 1% by volume. This test report relates only to the materials sent for examination and any use or extension of the information by the client of these results is the responsibility of the client. Please reference Appendix I for the bulk analysis results.

SITE OBSERVATION AND INFORMATION:

- 1) This room consists of a carpeted floor, plaster bulkhead and drywall walls. The walls were sampled for asbestos containing drywall mud compound which resulted in no asbestos detected. The results of the investigation conclude there is no concern with the whiteboard installation project. Please refer to *Appendix I* for the bulk analysis report.

If you have any questions or concerns regarding the inspection activity that was carried out by Bersch Consulting Ltd. at Civic Square East, please contact Mitch Webber or Brad Berschinsky of Bersch Consulting Ltd. Thank you for this opportunity of service!

Sincerely,

A handwritten signature in blue ink, appearing to read "Mitch Webber", with a long horizontal line extending to the right.

Mitch Webber

Bersch Consulting Ltd.

B67PRAF07G

Bersch Consulting Ltd.

B67BAF07G

244-2002 Quebec Avenue
Saskatoon, SK S7K 1W4**BULK SAMPLE ANALYSIS REPORT****PROJECT NO: B67.17****CLIENT: CITY OF SASKATOON****CONTACT: KAREN SINCLAIR****LOCATION: 202 4TH AVENUE NORTH, SASKATOON, SK**

NO.	DATE	SAMPLE INFORMATION	ASBESTOS	%	ANALYST
1	7-Jun-17	3rd Floor - 334 - Drywall Mud Compound Wall Compilation	No Asbestos Detected		WB

BERSCH & ASSOCIATES LTD.

March 18, 2016

City of Saskatoon
Project Services
3130 Laurier Drive
Saskatoon, SK
S7L 5J7

ATTENTION: Darrell Wasylowich

SUBJECT: Bulk Sample Analysis Report

Please find attached the laboratory results for the bulk analysis of the samples collected within the Civic Square East Building. The samples were analyzed for the identification of asbestos. Asbestos was not detected within the samples.

The result for the bulk sample was obtained by examination in accordance with the current USEPA 600/R-93/116 Method for the analysis of asbestos in building materials using polarized light microscopy and dispersion staining techniques. The detection limit of this method is listed as less than 1% by volume.

This test report relates only to the materials sent for examination and any use or extension of the information by the client of these results is the responsibility of the client. If any questions arise on the results of the attached information please contact me at 306 222 7477. Thank you for this opportunity of service!

Sincerely,



Brad Berschiminsky
Bersch & Associates Ltd.
File: B67BLC07

Bersch & Associates Ltd.

B67BAC07

Box 3568
Humboldt, Sask. S0K 2A0

BULK SAMPLE ANALYSIS REPORT

PROJECT NO: B67.16

**CLIENT: CITY OF SASKATOON
PROJECT SERVICES**

CONTACT: DARRELL WASYLOWICH

LOCATION: CIVIC SQUARE EAST - 202 4TH AVENUE NORTH, SASKATOON, SK.

NO.	DATE	SAMPLE INFORMATION	ASBESTOS	%	ANALYST
1	7-Mar-16	Basement Boiler Room - Ceiling Plaster In Wire Mesh	No Asbestos Detected		WB
2	7-Mar-16	Basement Boiler Room - Mud Compound At The Hangers Along The Pipeline In The Overhead Area Between The	No Asbestos Detected		WB
3	7-Mar-16	Basement Boiler Room - Mud Compound Debris On The Upper Surface Of The 1981 Boiler.	No Asbestos Detected		WB
4	7-Mar-16	Basement Boiler Room - Plaster Coat On The South Wall Adjacent The 1981 Boiler.	No Asbestos Detected		WB
5	7-Mar-16	Basement Boiler Room - Concrete Gasket Material / Debris On The Floor Below The Stairs.	No Asbestos Detected		WB
6	7-Mar-16	Basement Boiler Room - 1981 Concrete Boiler Pad.	No Asbestos Detected		WB
7	7-Mar-16	Loading Dock Control Room - Wall Plaster Within The South-Most Room Adjacent The Exterior Loading Dock.	No Asbestos Detected		WB

BERSCH & ASSOCIATES LTD.

August 2nd, 2016

City of Saskatoon
Facilities & Fleet Management Division
222 – 3rd Avenue North
Saskatoon, Sk
S7K 0J5

ATTENTION: Cris Figueroa – Project Coordinator

SUBJECT: Bulk Sample Analysis Report – 202 4th Avenue North

Please find attached our laboratory's results for the bulk samples collected on July 29th, 2016 from 202 4th Ave North in Saskatoon. The samples were analyzed in our laboratory for the identification of asbestos. Asbestos **was** detected in one of the samples.

The results for the samples submitted were obtained by examination in accordance with the current USEPA 600/R-93/116 Method for the analysis of asbestos in building materials using polarized light microscopy and dispersion staining techniques. The detection limit of this method is listed as less than 1% by volume.

This test report relates only to the materials sent for examination and any use or extension of the information by the client of these results is the responsibility of the client.

If any questions arise on the results of the attached information please contact our office. Thank you for this opportunity of service to your firm.

Sincerely,



Brad Berschiminsky
Bersch & Associates Ltd.

File: B67BLG29F – 202 4th Ave North

Bersch & Associates Ltd.

B67BAG29F

Box 3568

Humboldt, Sask. S0K 2A0

BULK SAMPLE ANALYSIS REPORT**PROJECT NO: B67.16****CLIENT: CITY OF SASKATOON****FACILITIES & FLEET MANAGEMENT DIVISION****CONTACT: CRIS FIGUEROA****LOCATION: 202 4TH AVE NORTH, SASKATOON, SK**

NO.	DATE	SAMPLE INFORMATION	ASBESTOS	%	ANALYST
1	29-Jul-16	B100 - Plaster & Skim Coat Above Ceiling Tile	No Asbestos Detected		WB
2	29-Jul-16	B100 - Pipe Fitting Compound Above Ceiling Tile	Chrysotile	40%	WB
3	29-Jul-16	B100 - Debris On Ceiling Tile Grid	No Asbestos Detected		WB

BERSCH CONSULTING LTD.

March 9, 2017

City of Saskatoon
Asset & Financial Management
201 – 3rd Avenue North
Saskatoon, SK.
S7K 2H7

ATTENTION: Scott McCaig

SUBJECT: CSE 2nd Floor PRA Report

Please reference the laboratory results for the bulk sample collected February 14, 2017 from the 345B Lunch Area within the Civic Square East Building as a reference to the concrete in your renovation. The sample was analyzed for the identification of asbestos. Asbestos **was not** detected within the sample.

The results for the sample submitted was obtained by examination in accordance with the current USEPA 600/R-93/116 Method for the analysis of asbestos in building materials using polarized light microscopy and dispersion staining techniques. The detection limit of this method is listed as less than 1% by volume.

In reference to the 2nd floor space renovation area, as per the attached floor plan you provided, I have attached the portion of the spreadsheet and the floor plan from the November 2016 Asbestos Survey Report that was conducted throughout the space. Asbestos materials were not identified throughout the portion of the building involving your 2nd Floor Renovation Project. The drywall joint compound, plaster, flooring and ceiling tiles throughout the 2nd Floor Renovation area were analyzed for asbestos content resulting in no asbestos detected. The floor beneath the carpet was examined in 2 locations within room 214 and 215 resulting in a concrete floor observed below the carpet.

If any questions arise on the results of the attached information, please contact our office. Thank you for this opportunity of service!

Sincerely,

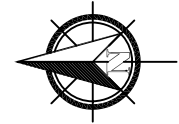


Brad Berschiminsky
Bersch Consulting Ltd.
B67BLB14G 2nd flr CSE

ATTACHMENT I

OUTLINED AREA YOU SUPPLIED

PROJECT NORTH



LEGEND

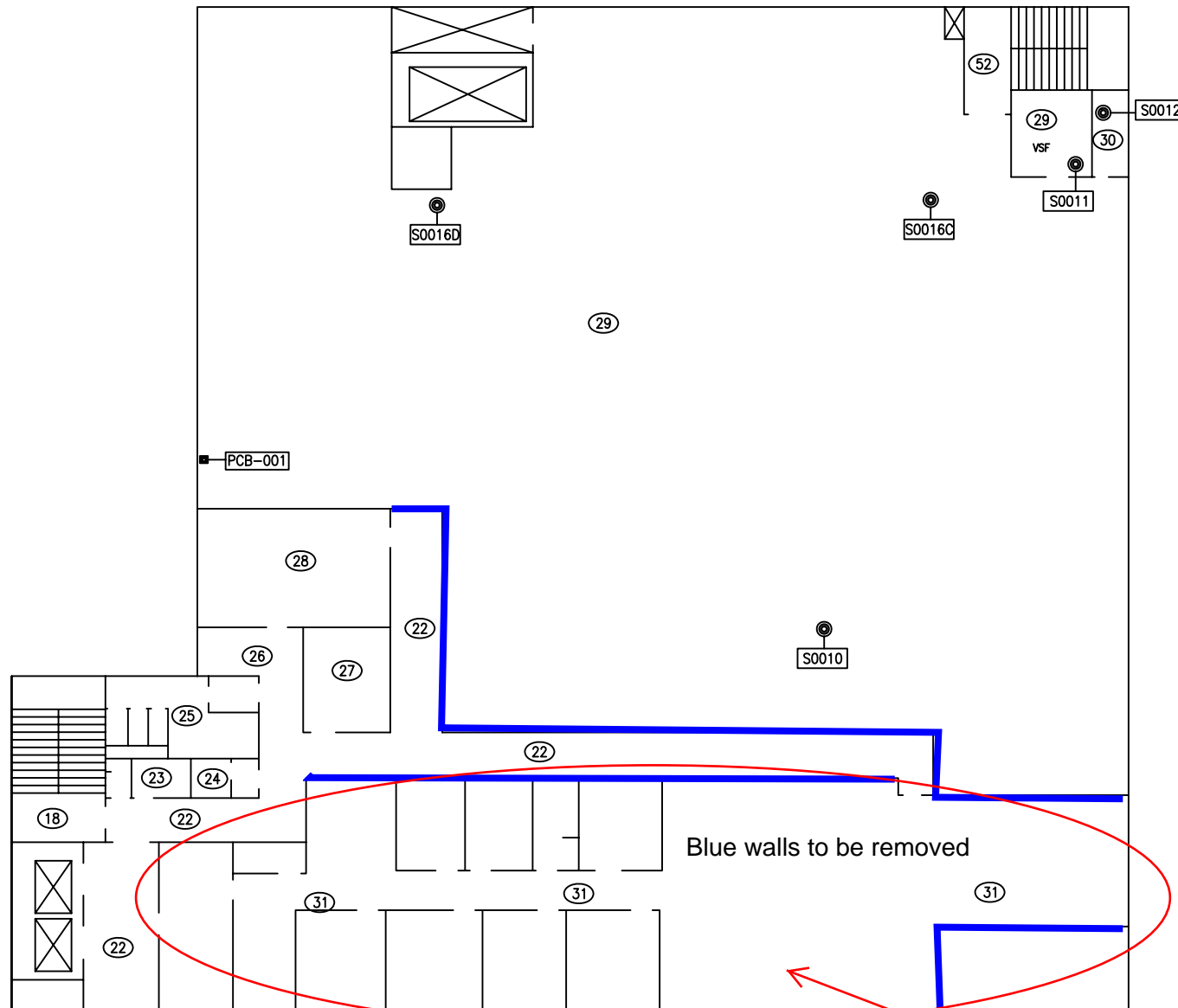
- (XX) LOCATION NUMBER
 - ⊙ ASBESTOS BULK SAMPLE
 - PCB WINDOW CAULKING SAMPLE
- ASBESTOS CONTAINING MATERIALS**
- AT ACOUSTIC TILES
 - DJC DRYWALL JOINT COMPOUND
 - M MECHANICAL INSULATION
 - P PIPE INSULATION
 - PL PLASTER
 - SPF SPRAYED FIREPROOFING
 - TRA TRANSITE
 - TX TEXTURE FINISH
 - VA VINYL ASBESTOS TILE
 - VSF VINYL SHEET FLOORING
- OTHER HAZARDOUS MATERIALS**
- LBP LEAD BASED PAINT
 - Ⓢ MERCURY THERMOSTAT OR SWITCH
 - Ⓣ PCB TRANSFORMER
 - ODS OZONE DEPLETING SUBSTANCE OR HALOCARBON



CLIENT:
 CITY OF SASKATOON
 330-350 3RD AVENUE NORTH
 SASKATOON, SASKATCHEWAN
 S7K 6G7

DRAWING NAME:
 HAZARDOUS BUILDING
 MATERIAL SURVEY
 202 4TH AVENUE NORTH
 SASKATOON, SASKATCHEWAN

SCALE: NTS	PROJECT NO: 7141X
DATE: APRIL 2013	REVISION NO:
DRAWN BY: VM	DRAWING NO: 3 of 7
CHECKED BY: JK	



Blue walls to be removed

Remove flooring in this area

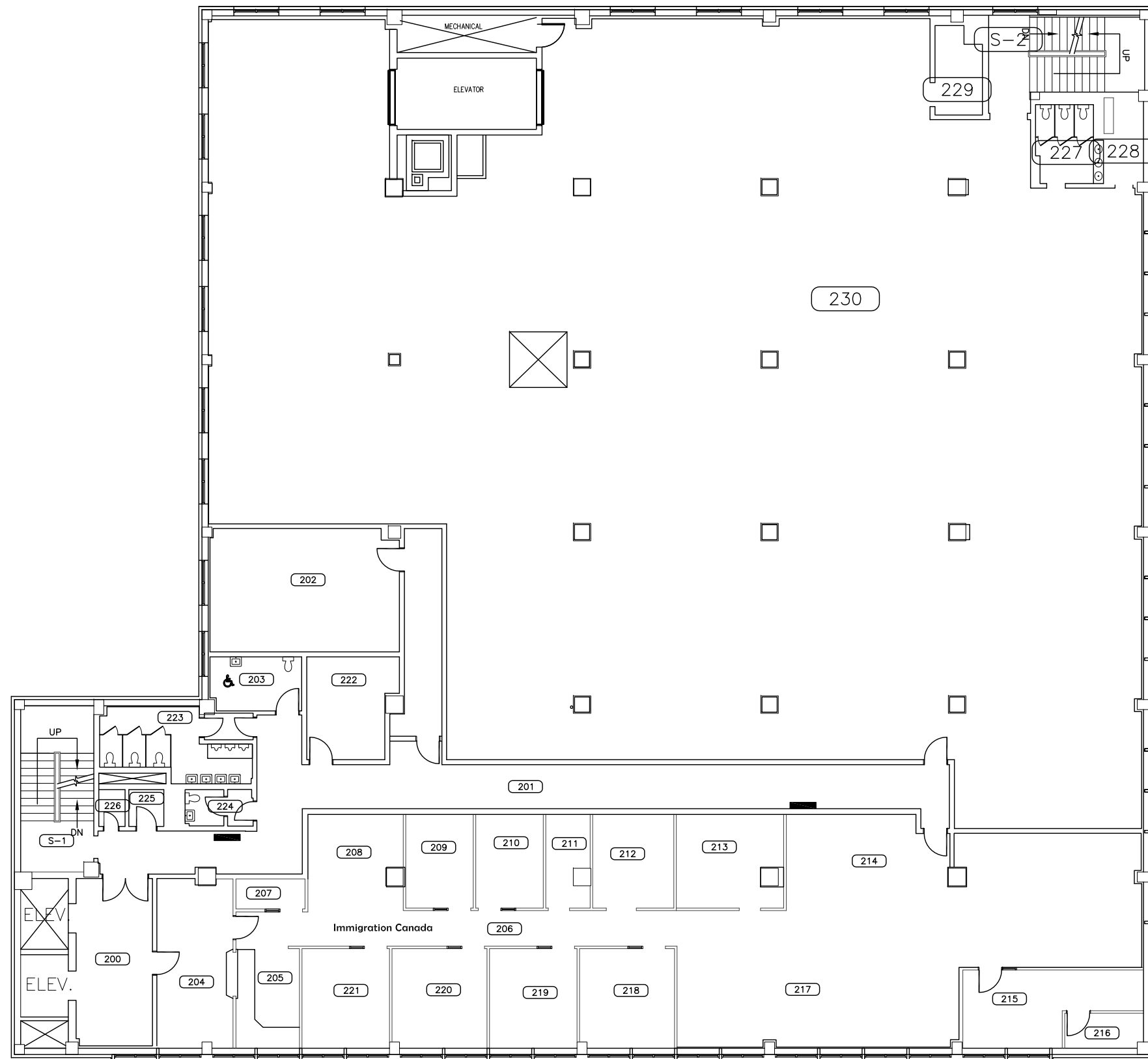
SECOND FLOOR

ATTACHMENT II

PORTION OF THE NOV. 2016 ASSESSMENT

NOTE:
THESE DRAWINGS HAVE BEEN PREPARED
BASED ON INFORMATION PROVIDED BY
OTHERS. THE CITY HAS TAKEN STEPS
TO VERIFY THE ACCURACY AND/OR
COMPLETENESS OF THIS INFORMATION
BUT SHALL NOT BE RESPONSIBLE FOR
AND ERRORS OR OMISSIONS THAT
MAY BE INCORPORATED AS A RESULT
OF ERRONEOUS INFORMATION PROVIDED
BY OTHERS THAT WAS NOT ABLE TO BE
VISUALLY CONFIRMED.

- GENERAL NOTES:
1. ALL DIMENSIONS ARE IN MILLIMETRES
 2. DRAWINGS ARE NOT TO BE SCALED.
 3. ALL DRAWINGS TO BE READ IN CON-
JUNCTION WITH THE SPECIFICATIONS
UNLESS OTHERWISE NOTED.
 4. VERIFY SITE CONDITIONS, DIMENSIONS
AND LOCATION OF ALL UTILITIES PRIOR
TO THE START OF CONSTRUCTION.
 5. REPORT ALL DISCREPANCIES TO THE
CONSULTANT.



REV	ISSUED FOR	DATE

DESIGNED BY:	DRAWN BY:	CHECKED BY:	REQUESTED BY:
	MSB		

SCALE:	DATE:
1:200	17/11/2014

SHEET NAME
**Second Floor
Furniture Plan**

PROJECT TITLE
**528
Civic Square
East**

PROJECT NO.	SHEET

Civic Square East - 2016															
			SAMPLE DATA												
Floor	Room Number	Use	SAMPLE SAMPLE REP	Sample ID	Date DD/MM/YY	Asbestos Type	% of Asbestos	Tradename ACM Product	Condition	Priority	Description of Sample Location	Asbestos Content In Area	Potential for Disturbance	Recommended Action	Comments
2	200	Vestibule										No Accessible ACM			
2	201	Corridor	Sample	B67-ASB.106	25-Sep-16	No Asbestos Detected					201 - Drywall Mud Compilation	No Accessible ACM			
2	202											No Accessible ACM			
2	203	W/C										No Accessible ACM			
2	204	Office										No Accessible ACM			
2	205	Office										No Accessible ACM			
2	206	Corridor										No Accessible ACM			
2	207	Office										No Accessible ACM			
2	208	Office										No Accessible ACM			

Civic Square East - 2016															
			SAMPLE DATA												
Floor	Room Number	Use	SAMPLE SAMPLE REP	Sample ID	Date DD/MM/YY	Asbestos Type	% of Asbestos	Tradename ACM Product	Condition	Priority	Description of Sample Location	Asbestos Content In Area	Potential for Disturbance	Recommended Action	Comments
2	209	Office										No Accessible ACM			
2	210	Office										No Accessible ACM			
2	211	Office										No Accessible ACM			
2	212	Office										No Accessible ACM			
2	213	Office										No Accessible ACM			
2	214		Sample	B67-ASB.107	25-Sep-16	No Asbestos Detected					214 - 2' x 2' Ceiling Tile Small Pin Hole & Textured Pattern	No Accessible ACM			
2	215	Storage										No Accessible ACM			
2	216	Server Room	Sample	B67-ASB.108	25-Sep-16	No Asbestos Detected					216 - 1' x 1' Floor Tile Light Gray w/ White & Dark Gray Fleck	No Accessible ACM			
2	217											No Accessible ACM			
2	218	Office										No Accessible ACM			
2	219	Office										No Accessible ACM			
2	220	Office										No Accessible ACM			
2	221	Office										No Accessible ACM			
2	222	Office										No Accessible ACM			
2	223	Washroom										No Accessible ACM			
2	224	Washroom										No Accessible ACM			
2	225		Sample	B67-ASB.100	12-Sep-16	Chrysotile	30%	Pipeline Fitting Compound	Poor/Mod	2	225 - Pipe Fitting Compound In Wall Access Hatch	Pipeline Fitting Compound	Low	Manage	
2	227	Washroom										No Accessible ACM			
2	228	Washroom										No Accessible ACM			
2	229	Electrical Room										No Accessible ACM			
2	230		Sample	B67-ASB.113a	25-Sep-16	No Asbestos Detected					230 - Plaster Skim Coat Compilation	No Accessible ACM			
2	230		Sample	B67-ASB.113b	25-Sep-16	No Asbestos Detected					230 - Plaster Base Coat Compilation	No Accessible ACM			
2	231		Sample	B67-ASB.105	25-Sep-16	No Asbestos Detected					231 - Lineal Pipe Insulation	No Accessible ACM			
2	226	Spy Channel	Sample	B67-ASB.101	12-Sep-16	No Asbestos Detected					2nd Floor Spy Channel - Rope Gasket Material	Pipeline Fitting Compound			
2	226	Spy Channel	Sample	B67-ASB.102	12-Sep-16	Chrysotile	40%	Pipeline Fitting Compound	Poor/Mod	1	2nd Floor Spy Channel - Pipe Fitting Compound Compilation Sample	Pipeline Fitting Compound	Low	Repair/Remove	
2		Pipe Chase										No Accessible ACM			
2	S-1	Stairwell										No Accessible ACM			
2	S-2	Stairwell										No Accessible ACM			
2	E-1	Elevator										No Accessible ACM			
2	E-2	Elevator										No Accessible ACM			
2	E-3	Freight Elevator										No Accessible ACM			

ATTACHMENT III

BULK ANALYSIS REFERENCED 3RD FLOOR

BERSCH CONSULTING LTD.

March 9, 2017

City of Saskatoon
Facilities & Fleet Management
222 3rd Avenue North
Saskatoon, SK.
S7K 0J5

ATTENTION: Tyler Karst

SUBJECT: Bulk Sample Analysis Report 345B Lunch Area

Please find attached the laboratory results for the bulk sample collected February 14, 2017 from the 345B Lunch Area within the Civic Square East Building. The sample was analyzed for the identification of asbestos. Asbestos **was not** detected within the sample.

The results for the sample submitted was obtained by examination in accordance with the current USEPA 600/R-93/116 Method for the analysis of asbestos in building materials using polarized light microscopy and dispersion staining techniques. The detection limit of this method is listed as less than 1% by volume.

This test report relates only to the materials sent for examination and any use or extension of the information by the client of these results is the responsibility of the client.

If any questions arise on the results of the attached information, please contact our office. Thank you for this opportunity of service!

Sincerely,



Brad Berschiminsky
Bersch Consulting Ltd.
B67BLB14G

Bersch Consulting Ltd.

244-2002 Quebec Avenue
Saskatoon, SK S7K 1W4

B67BAB14G

BULK SAMPLE ANALYSIS REPORT

PROJECT NO: B67.17
CLIENT: CITY OF SASKATOON
CONTACT: TYLER KARST
LOCATION: CIVIC SQUARE EAST

NO.	DATE	SAMPLE INFORMATION	ASBESTOS	%	ANALYST
1	14-Feb-17	345B Lunch Area - Precast Concrete Ceiling Material Sampled Along The Ceiling At The Centre Of The North Wall.	No Asbestos Detected		WB

BERSCH

CONSULTING LTD.

INVESTIGATION REPORT

May 24, 2017

CLIENT: City of Saskatoon
222 3rd Avenue North
Saskatoon, SK
S7K 0J5

ATTENTION: Danielle Wyshynski

PROJECT INFO: Civic Square East – Stairwell S-2 Investigation

FILE NUMBER: B67IRE23G

Bersch Consulting Ltd. was requested by the City of Saskatoon to provide an investigation for the Main Floor S-2 Stairwell pipe chase at Civic Square East located in Saskatoon, SK on Tuesday, May 23, 2017. The investigation consisted of inspecting the pipe chase for any suspect asbestos material that may affect the upcoming Shaw project.

Bersch Consulting Ltd. inspected the pipe chase as well as the bottom of the pipe chase in room B117 – Electrical Room located in the basement of the building. The investigation results are as follows:

B117 – Electrical Room

- **Pipe Chase:** This area is constructed of cindercrete block walls and concrete. There are runs of fiberglass insulated pipes running vertically throughout the shaft. A small amount of asbestos mud compound was noted on a hanger but is not of concern for your project.

Main Floor S-2 Stairwell

- **Pipe Chase:** This area is constructed of plaster and skim coat with the cindercrete block wall behind the plaster. The cindercrete wall was drilled into to determine the presence/absence of vermiculite insulation; no insulation was found in the block wall. The plaster and skim coat was tested during the CSE survey and are sample numbers: B67-ASB.19a/b on the Survey Database sheet.

May 23, 2017

The results of the investigation conclude there is no asbestos concerns to address prior to the Shaw Cable Installation project. However, in the event any suspect asbestos containing material is identified, stop the work and contact Bersch Consulting Ltd. to determine if further investigation is needed.

If you have any questions or concerns regarding the inspection activity that was carried out by Bersch Consulting Ltd. at Civic Square East, please contact Mitch Webber of Bersch Consulting Ltd. Thank you for this opportunity of service!

Sincerely,

A handwritten signature in blue ink, appearing to read "M. Webber", with a long horizontal line extending to the right.

Mitch Webber

Bersch Consulting Ltd.

B67IRE23G

BERSCH

CONSULTING LTD.

PRE-RENOVATION INVESTIGATION REPORT

CLIENT: City of Saskatoon
222 3rd Avenue North
Saskatoon, SK
S7K 0J5

ATTENTION: Karen Sinclair

PROJECT INFO: Civic Square East – 202 4th Avenue North – Room 334 Investigation

FILE NUMBER: B67IRF07G

Bersch Consulting Ltd. was requested by the City of Saskatoon to provide an investigation for room 334 of 202 4th Avenue North located in Saskatoon, SK on Wednesday, June 7, 2017. The investigation consisted of collecting a bulk sample to determine the presence/absence of asbestos content for the White Board installation project.

Bersch Consulting Ltd. inspected the ceiling spaces and office spaces including two fire exit stairwells located in the North and South wings of the building. The investigation results are as follows:

Third Floor

- **Room 334:** This area consisted of a carpeted floor, plaster bulk heads and drywall walls. One compilation bulk sample of drywall mud compound was collected.

The results of the investigation conclude there is no asbestos concern with the cable installation project. However, in the event any suspect asbestos containing material is identified, it is recommended the area is isolated and Bersch Consulting Ltd. contacted for further investigation. Please refer to *Appendix I* for the bulk analysis report.

If you have any questions or concerns regarding the inspection activity that was carried out by Bersch Consulting Ltd. at Civic Square East, please contact Mitch Webber or Brad Berschiminsky of Bersch Consulting Ltd.

Thank you for this opportunity of service to your organization.

Sincerely,

A handwritten signature in blue ink, appearing to read "Mitch Webber", with a long horizontal flourish extending to the right.

Mitch Webber

Bersch Consulting Ltd.

B67IRF07G

APPENDIX I

Bersch Consulting Ltd.

B67BAF07G

244-2002 Quebec Avenue
Saskatoon, SK S7K 1W4

BULK SAMPLE ANALYSIS REPORT

PROJECT NO: B67.17

CLIENT: CITY OF SASKATOON

CONTACT: KAREN SINCLAIR

LOCATION: 202 4TH AVENUE NORTH, SASKATOON, SK

NO.	DATE	SAMPLE INFORMATION	ASBESTOS	%	ANALYST
1	7-Jun-17	3rd Floor - 334 - Drywall Mud Compound Compilation	No Asbestos Detected		WB

BERSCH

CONSULTING LTD.

PRE-RENOVATION INVESTIGATION REPORT

CLIENT: City of Saskatoon
222 3rd Avenue North
Saskatoon, SK
S7K 0J5

ATTENTION: Karen Sinclair

PROJECT INFO: Civic Square East – 202 4th Avenue North – Room 334 Investigation

FILE NUMBER: B67IRF07G

Bersch Consulting Ltd. was requested by the City of Saskatoon to provide an investigation for room 334 of 202 4th Avenue North located in Saskatoon, SK on Wednesday, June 7, 2017. The investigation consisted of collecting a bulk sample to determine the presence/absence of asbestos content for the White Board installation project.

Bersch Consulting Ltd. inspected the ceiling spaces and office spaces including two fire exit stairwells located in the North and South wings of the building. The investigation results are as follows:

Third Floor

- **Room 334:** This area consisted of a carpeted floor, plaster bulk heads and drywall walls. One compilation bulk sample of drywall mud compound was collected.

The results of the investigation conclude there is no asbestos concern with the cable installation project. However, in the event any suspect asbestos containing material is identified, it is recommended the area is isolated and Bersch Consulting Ltd. contacted for further investigation. Please refer to *Appendix I* for the bulk analysis report.

If you have any questions or concerns regarding the inspection activity that was carried out by Bersch Consulting Ltd. at Civic Square East, please contact Mitch Webber or Brad Berschiminsky of Bersch Consulting Ltd.

Thank you for this opportunity of service to your organization.

Sincerely,

A handwritten signature in blue ink, appearing to read "Mitch Webber", with a long horizontal flourish extending to the right.

Mitch Webber

Bersch Consulting Ltd.

B67IRF07G

APPENDIX I

Bersch Consulting Ltd.

B67BAF07G

244-2002 Quebec Avenue
Saskatoon, SK S7K 1W4

BULK SAMPLE ANALYSIS REPORT

PROJECT NO: B67.17

CLIENT: CITY OF SASKATOON

CONTACT: KAREN SINCLAIR

LOCATION: 202 4TH AVENUE NORTH, SASKATOON, SK

NO.	DATE	SAMPLE INFORMATION	ASBESTOS	%	ANALYST
1	7-Jun-17	3rd Floor - 334 - Drywall Mud Compound Compilation	No Asbestos Detected		WB