

BERSCH & ASSOCIATES LTD.

October 9th, 2015

City of Saskatoon
Wastewater Treatment Plant
470 Whiteswan Drive
Saskatoon, Sk
S7K 6Z7

ATTENTION: Ken Hanson

SUBJECT: Bulk Sample Analysis Report

Please find attached the laboratory results for the bulk sample dropped off from Lift Station, collected on October 6th, 2015. The sample was analyzed for the identification of asbestos. Asbestos **was** detected in the sample.

The results for the samples submitted was obtained by examination in accordance with the current USEPA 600/R-93/116 Method for the analysis of asbestos in building materials using polarized light microscopy and dispersion staining techniques. The detection limit of this method is listed as less than 1% by volume.

This test report relates only to the materials sent for examination and any use or extension of the information by the client of these results is the responsibility of the client.

If any questions arise on the results of the attached information please contact our office. Thank you for this opportunity of service!

Sincerely,

Brad Berschiminsky
Bersch & Associates Ltd.

File: B67BLJ06 – Lift Station

Bersch & Associates Ltd.

B67BAA09

Box 3568

Humboldt, Sask. S0K 2A0

BULK SAMPLE ANALYSIS REPORT**PROJECT NO. B67.13****CLIENT: City of Saskatoon****Water & Wastewater Treatment Branch, Saskatoon, SK.****Contact: Jonathan Laforge****Location: Waste Water Lift Stations**

NO.	DATE	SAMPLE INFORMATION	ASBESTOS	%	ANALYST
B1	9-Jan-13	58st. Lift Station - Pipeline fitting compound on backup generator exhaust	None detected		WB
B2	9-Jan-13	Storm Lift Station - Ceiling parging material	None detected		WB
B3	9-Jan-13	Spadina Lift Station - Pipeline fitting on hot water line in bathroom	Chrysotile	70	WB
B4	9-Jan-13	Spadina Lift Station - Pipeline fitting on cold water line in bathroom	Chrysotile	75	WB
B5	9-Jan-13	Spadina Lift Station - Pipeline fitting on small blue line adjacent the south wall in lower level check valve room	Chrysotile	30	WB
B6	9-Jan-13	Spadina Lift Station - Roof drain fitting in Wet Well room	None detected		WB
B7	9-Jan-13	Spadina Lift Station - Mud compound beneath canvass on brown duct adjacent west wall in the MCC Room	Chrysotile	70	WB
B8	9-Jan-13	14st Lift Station - Attic insulation	None detected		WB

Bersch & Associates Ltd.

B67BAA09

Box 3568

Humboldt, Sask. S0K 2A0


BULK SAMPLE ANALYSIS REPORT**PROJECT NO. B67.13****CLIENT: City of Saskatoon****Water & Wastewater Treatment Branch, Saskatoon, SK.****Contact: Jonathan Laforge****Location: Waste Water Lift Stations**

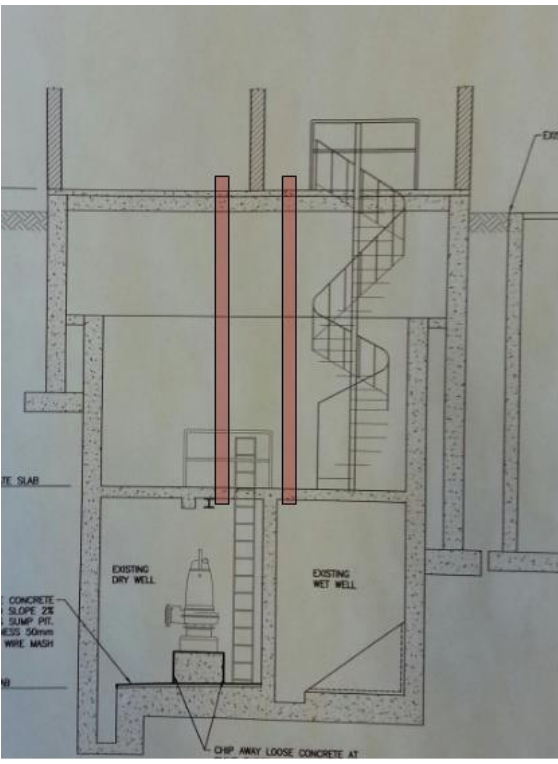
NO.	DATE	SAMPLE INFORMATION	ASBESTOS	%	ANALYST
B9	9-Jan-13	14st Lift Station - Transite pipe on the ground floor	Chrysotile	40	WB
B10	9-Jan-13	14st Lift Station - Breeching on generator exhaust	None detected		WB
B11	9-Jan-13	Idylwyld & 40st Lift Station - Transite pipe	Chrysotile	40	WB

ASBESTOS CONTAINING MATERIAL FLOORPLAN – 14th Street Lift Station

Transite Pipe used for Ventilation Piping – 40% Chrysotile, Tested Jan 9th 2013

DO NOT CUT/GRIND OR OTHERWISE DISTURB – ASBESTOS DUST IS KNOWN TO CAUSE LUNG CANCER

 Asbestos Containing



Dry Pit



Main Floor



Dry Pit



IN CASE OF
EMERGENCY
CALL 915-2542

CAUTION