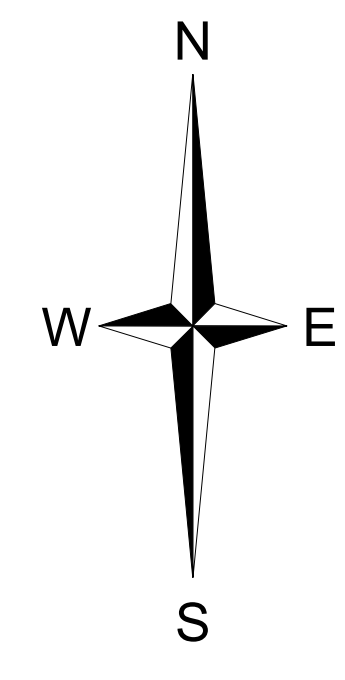
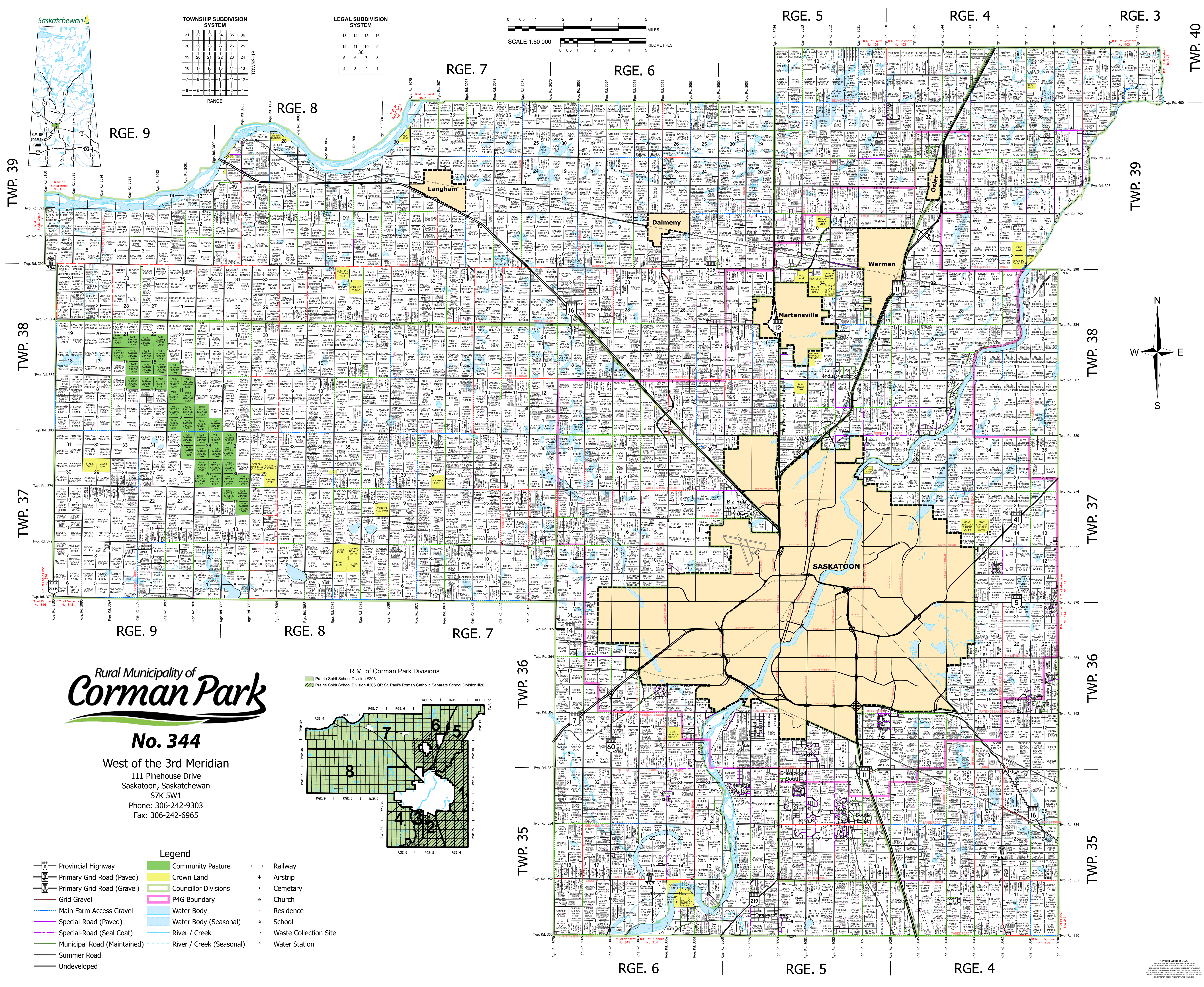
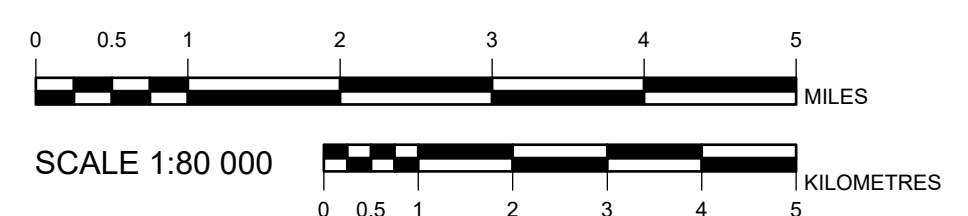


TOWNSHIP SUBDIVISION SYSTEM

31	32	33	34	35	36
20	21	22	23	24	25
10	11	12	13	14	15
1	2	3	4	5	6

LEGAL SUBDIVISION SYSTEM

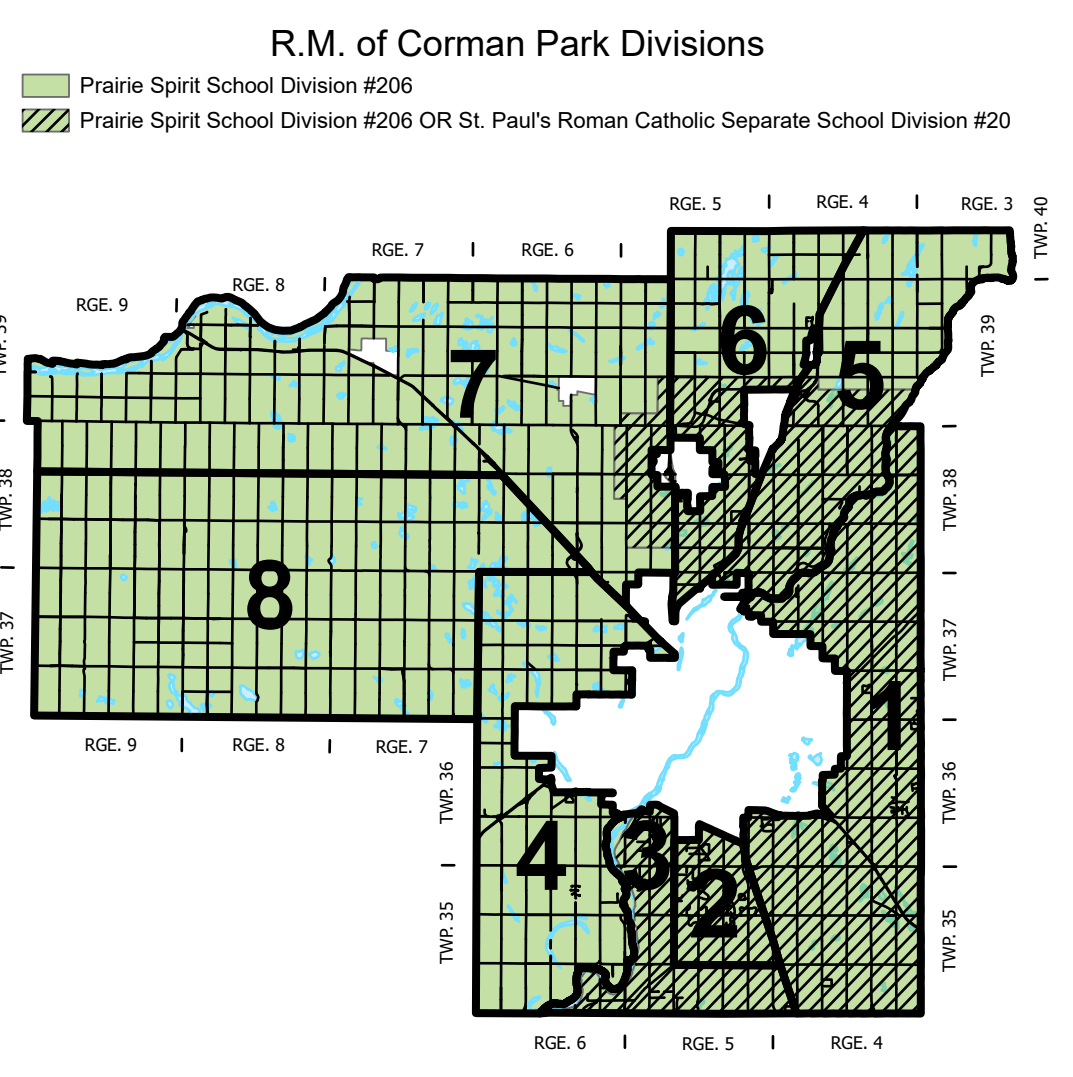
13	14	15	16
12	11	10	9
5	6	7	8
4	3	2	1



Rural Municipality of
Corman Park

No. 344

West of the 3rd Meridian
111 Pinehouse Drive
Saskatoon, Saskatchewan
S7K 5W1
Phone: 306-242-9303
Fax: 306-242-6965



- Legend**
- Provincial Highway
 - Primary Grid Road (Paved)
 - Primary Grid Road (Gravel)
 - Grid Gravel
 - Main Farm Access Gravel
 - Special-Road (Paved)
 - Special-Road (Seal Coat)
 - Municipal Road (Maintained)
 - Summer Road
 - Undeveloped
 - Community Pasture
 - Crown Land
 - Councillor Divisions
 - P4G Boundary
 - Water Body
 - Water Body (Seasonal)
 - River / Creek
 - River / Creek (Seasonal)
 - Railway
 - Airstrip
 - Cemetery
 - Church
 - Residence
 - School
 - Waste Collection Site
 - Water Station